



MOSQUEDA COMMUNITY CENTER

AFTER SCHOOL PROGRAM ACTIVITIES

APRIL 2026

4670 E Butler Ave.
Fresno, CA 93702

(559) 621-7529

Center Hours

Monday - Friday
10:00 AM - 7:00 PM

After School Program

Monday - Friday
1:00 PM - 6:00 PM

Meal Service

Monday - Friday
3:00 PM - 5:00 PM

- **Enrichment**
- **Arts and Crafts**
- **Snack**
- **Physical Activity**
- **Homework Help**

Ages 5 - 17. All activities are free of charge.

Stay Connected

www.fresno.gov/parks

@PARCSFresno

@PARCSFresno

SUN	MON	TUE	WED	THU	FRI	SAT
Special Notes from Center: In-house Spring Fest Date: April 10th Time: 3:30 PM - 5:30 PM			1 Sponge Painted Bunny Circuit Fitness	2 Chalk Tape Bunny Eggs Floor Hockey	3 Staff's Choice BMX Bike Club	4
5 Easter Day - Community Centers Closed	6 Kid's Choice Four Square	7 Salt Paint NEX	8 Paper Plate Snail Physical Fitness	9 Cupcake Flowers Croquet	10 Bingo BMX Bike Club	11
12	13 Super Heroes Craft Relay Races	14 Watercolor Spray Art Nintendo Switch	15 Tissue Paper Painting Obstacle Course	16 Pipe Cleaner Flowers Bocce	17 Karaoke BMX Bike Club	18
19	20 Lady Bug Craft Dodge Ball	21 Flower Play Dough Musical Chairs	22 Flower Painting Full-Body Workout	23 Oil Pastel Painting Paddle Ball	24 Loteria BMX Bike Club	25
26	27 Tape Resist Art Freeze Tag	28 Paper Plate Bee Craft Hot Potato	29 Pipe Cleaner Bubble Wands Aerobics	30 Mosaic Physical Activity		



EVENTS

NATURE ADVENTURE PROGRAM



Date: Thursday, April 2, 2026

Time: 10:00 AM - 4:00 PM

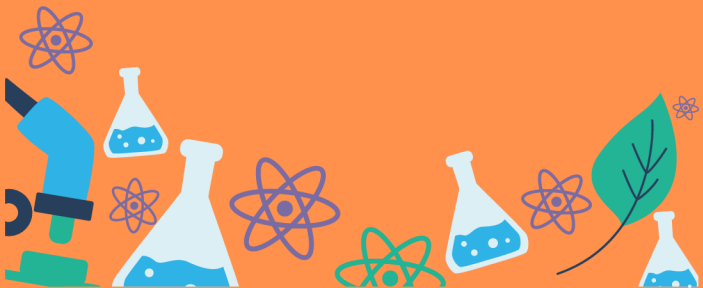
Ask staff for more detail and how to sign up for this unique opportunity to hike and explore at Millerton Lake then visit the Friant Fish Hatchery.

SCIENCE CLUB

TOPIC: ANATOMY

Dates: April 7 & 21

Time: 4:00 PM - 5:00 PM




MOSQUEDA COMMUNITY CENTER

 www.fresno.gov/parks

 @PARCSFresno

 @PARCSFresno

 (559) 621-7529

SPRING FEST

Date: Friday, April 10, 2026

Time: 3:30 PM - 5:30 PM

Join us for a gathering fun filled day with games, arts & crafts and prize give away!

FAMILY GAME NIGHT

Date: Thursday, April 23, 2026

Time: 3:30 PM - 5:30 PM

Come join us for a fun afternoon in a friendly competition and lasting memories!

SCAN TO SEE MORE EVENTS



Services of an interpreter and additional accommodations such as assistive listening devices can be made available. Request for accommodations should be made more than five working days but no later than 48 hours prior to the scheduled program/event. Please contact 621-PLAY (7529).



SPECIAL HOURS

Challenge The Champ

Tuesdays

4:00 PM - 5:00 PM

Senior Program

Monday - Friday

9:00 AM -12:00 PM