



MAXIE L. PARKS COMMUNITY CENTER

AFTER SCHOOL PROGRAM ACTIVITIES

MAY 2026

1802 E California Ave.
Fresno, CA 93706

(559) 621-7529

Center Hours

Monday - Friday
10:00 AM - 7:00 PM
Saturday
12:00 PM - 5:00 PM

After School Program

Monday - Friday
1:00 PM - 6:00 PM

Meal Service

Monday - Friday
3:00 PM - 5:00 PM

- **Enrichment**
- **Arts and Crafts**
- **Snack**
- **Physical Activity**
- **Homework Help**

Ages 5 - 17. All activities are free of charge.

Stay Connected

www.fresno.gov/parks

@PARCSFresno

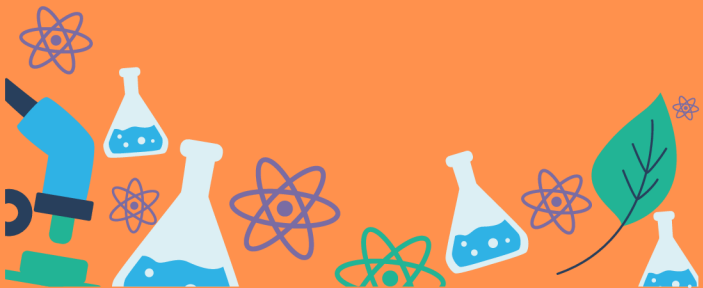
@PARCSFresno

| SUN | MON | TUE | WED | THU | FRI | SAT |
|--|--|--|---|--|--|--|
| Special Notes from Center: Open Gym: Monday, Tuesday, & Friday: 11:00AM-6:30PM Wednesday: 2:00PM-6:30PM Thursday: 1:00PM-6:30PM *Half court play during After School program | | | | | | |
| 3 | 4 Papel Picado Basketball | 5 Mini Pinatas Cat and Mouse | 6 Paper Fan Flying Disc Golf | 7 Paper Bag Kites Dodgeball | 8 Bubble Painting Musical Hula Hoops | 9 FACILITY CLOSED FOR PRIVATE RENTAL |
| 10 | 11 DIY Board Games Soccer | 12 DIY Dinosaur Hat Cart Races | 13 DIY Lip Balm Add 'Em Up | 14 Bubble Dough EZ Eats Keep Away | 15 Dragonflies Soccer Hoopla | 16 Sidewalk Chalk Open Gym |
| 17 | 18 DIY Soap Kickball | 19 Pom Pom Fish Roll the Dice | 20 DIY Xylophone Flag Football | 21 Felt Monsters Clay Creations Glow in the Dark Badminton | 22 Galaxy Slime Wall Ball | 23 Diamond Art Open Gym |
| 24 | 25 Memorial Day - Community Centers Closed | 26 Lava Lamp Volleyball | 27 Sand Art Rock, Paper, Scissors Tag | 28 Paper Plate Frisbee Pool Noodle Field Hockey | 29 Paper Plate Masks Flag Football | 30 Rock Painting Open Gym |
| 31 | | | | | | |



SCIENCE CLUB

RETURNING IN
SEPTEMBER




MAXIE L. PARKS COMMUNITY CENTER

 www.fresno.gov/parks

 @PARCSFresno

 @PARCSFresno

 (559) 621-7529

EVENTS

ITTY BITTY CLUBHOUSE MOTHER'S DAY TEA PARTY

Date: Wednesday, May 6, 2026

Time: 11:00 AM - 1:00 PM

Celebrate Mother's Day with crafts, games, and a tea party!

Registration Required.

EZ EATS TEEN COOKING CLASS

Date: Thursday, May 14, 2026

Time: 4:30 PM - 5:30 PM

Learn basic culinary skills and make a meal under 30 minutes. Open to teens ages 11-17.

OPEN HOUSE

Date: Thursday, May 28, 2026

Time: 4:00 PM - 6:00 PM

Discover what the Center has to offer with a fun-filled day of activities, tours, and connecting with the staff.

REGISTRATION OPEN FOR ITTY BITTY FATHER'S DAY PROGRAM

Date: Wednesday, June 17, 2026

Time: 11:00 AM - 1:00 PM

Celebrate Father's Day with crafts, games, and snacks. Open to ages 5 & under only with parent/guardian. **Registration required.**

SCAN TO SEE MORE EVENTS



Services of an interpreter and additional accommodations such as assistive listening devices can be made available. Request for accommodations should be made more than five working days but no later than 48 hours prior to the scheduled program/event. Please contact 621-PLAY (7529).



SPECIAL HOURS

Itty Bitty Clubhouse

Wednesdays 5/13, 5/20, & 5/27

11:00 AM - 1:00 PM

Toddler program for kids 0-5 years old.

Parent/Guardian participation is required.

Community Table Tennis

Thursdays

10:15 AM - 12:15 PM

Open Gym

Saturdays

12:30 PM - 4:30 PM