



# MARY ELLA BROWN COMMUNITY CENTER

## AFTER SCHOOL PROGRAM ACTIVITIES

# MAY 2026

1350 E Annadale Ave.  
Fresno, CA 93706

**(559) 621-7529**

### Center Hours

Monday - Friday  
10:00 AM - 7:00 PM

### After School Program

Monday - Friday  
1:00 PM - 6:00 PM

### Meal Service

Monday - Friday  
3:00 PM - 5:00 PM

- **Enrichment**
- **Arts and Crafts**
- **Snack**
- **Physical Activity**
- **Homework Help**

Ages 5 - 17. All activities are free of charge.

### Stay Connected

[www.fresno.gov/parks](http://www.fresno.gov/parks)

@PARCSFresno

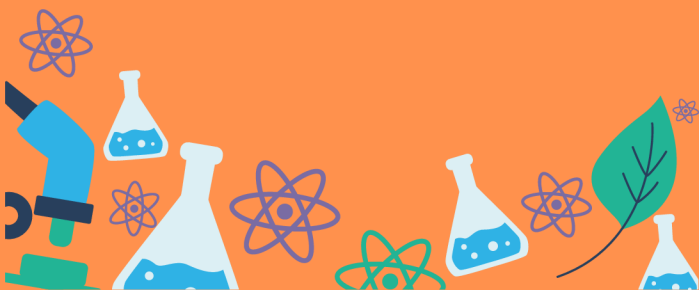
@PARCSFresno

SUN	MON	TUE	WED	THU	FRI	SAT
<b>Special Notes from Center:</b> EZ Eats Teen Cooking Class: Wednesday, May 6 <sup>th</sup> 3:30-5:30PM Clay Creations Ceramics Program: Thursday, May 21 <sup>st</sup> 3:30-4:30PM					<sup>1</sup> <b>Mother's Day Bracelets</b> <b>Don't Touch the Color Challenge</b>	<sup>2</sup>
<sup>3</sup>	<sup>4</sup> <b>DIY Piñata</b> <b>Dragon's Tail</b>	<sup>5</sup> <b>Papel Picado</b> <b>Soccer</b>	<sup>6</sup> <b>DIY Mother's Day Cards</b> <b>EZ Eats</b> <b>Disc Golf</b>	<sup>7</sup> <b>Flower Beadie Buddie</b> <b>Keychain</b> <b>Basketball</b>	<sup>8</sup> <b>Pictionary</b> <b>Relay Race</b>	<sup>9</sup>
<sup>10</sup>	<sup>11</sup> <b>Tissue Paper Flowers</b> <b>Dodgeball</b>	<sup>12</sup> <b>DIY Paper Spinners</b> <b>Table Tennis</b>	<sup>13</sup> <b>Glow Slime</b> <b>H.O.R.S.E.</b>	<sup>14</sup> <b>DIY Lava Lamp</b> <b>Flag Football</b>	<sup>15</sup> <b>Balloon Tower</b> <b>Clean Your Room</b>	<sup>16</sup>
<sup>17</sup>	<sup>18</sup> <b>Cactus Handprint</b> <b>Foot Golf</b>	<sup>19</sup> <b>DIY Board Game</b> <b>Badminton</b>	<sup>20</sup> <b>Diamond Art</b> <b>Change Places If...</b>	<sup>21</sup> <b>DIY Lip Balm</b> <b>Clay Creations</b> <b>Bucket Kickball</b>	<sup>22</sup> <b>Torn Paper Art</b> <b>Cart Racing</b>	<sup>23</sup>
<sup>24</sup>	<sup>25</sup> <b>Memorial Day - Community Centers Closed</b>	<sup>26</sup> <b>Popsicle Stick Puzzle</b> <b>Freeze Tag</b>	<sup>27</sup> <b>Clay Characters</b> <b>Capture The Flag</b>	<sup>28</sup> <b>Fuse Beads</b> <b>Minefield</b>	<sup>29</sup> <b>Sidewalk Chalk Art</b> <b>Field Hockey</b>	<sup>30</sup>
<sup>31</sup>						



## SCIENCE CLUB

RETURNING IN  
SEPTEMBER




## MARY ELLA BROWN COMMUNITY CENTER

 [www.fresno.gov/parks](http://www.fresno.gov/parks)

 @PARCSFresno

 @PARCSFresno

 (559) 621-7529

## EVENTS

### DIY MOTHER'S DAY WREATH

**Date:** Thursday, May 7, 2026

**Time:** 3:30 - 5:30 PM

Create a heartfelt, handmade wreath just in time for Mother's Day. Staff will guide you throughout each step.

**Registration required.**

### PAINT AND PASTRIES WITH MOM

**Date:** Friday, May 8, 2026

**Time:** 4:30 - 6:00 PM

Join us for a family paint night celebrating Mom! Staff will guide you through each step of the painting process.

**Registration required.**

### CLAY CREATIONS

**Date:** Thursday, May 21, 2026

**Time:** 3:30 - 4:30 PM

Monthly ceramics program. Paint your creation and take it home the same day!

### OPEN HOUSE

**Date:** Thursday, May 28, 2026

**Time:** 4:00 - 6:00 PM

Discover what the Center has to offer with a fun-filled day of activities, tours, and connecting with the staff.

### SCAN TO SEE MORE EVENTS



Services of an interpreter and additional accommodations such as assistive listening devices can be made available. Request for accommodations should be made more than five working days but no later than 48 hours prior to the scheduled program/event. Please contact 621-PLAY (7529).



## SPECIAL HOURS

### Center Closed

Monday, May 25<sup>th</sup>, 2026  
Memorial Day

### Open House Event

After School activities will be combined with the Open House event