



LAFAYETTE NEIGHBORHOOD CENTER

AFTER SCHOOL PROGRAM ACTIVITIES

MAY 2026

1516 E Princeton Ave.
Fresno, CA 93704

(559) 621-7529

Center Hours

Monday - Friday
10:00 AM - 7:00 PM

After School Program

Monday - Friday
1:00 PM - 6:00 PM

Meal Service

Monday - Friday
3:00 PM - 5:00 PM

- **Enrichment**
- **Arts and Crafts**
- **Snack**
- **Physical Activity**
- **Homework Help**

Ages 5 - 17. All activities are free of charge.

Stay Connected

www.fresno.gov/parks

@PARCSFresno

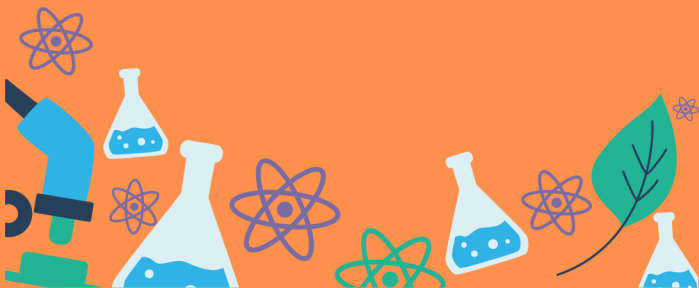
@PARCSFresno

SUN	MON	TUE	WED	THU	FRI	SAT
Special Notes from Center: Children under the age of 5 must be accompanied by an adult. All participants of the After School Program must wear closed-toe shoes.					Loom Bracelets Hopscotch Exercise Bingo	
3	Flower Bouquet Blocks Trivia Volleyball	Pony Beads Monopoly Handball	Keychains Puzzles Dodgeball	Card Making Board Games Tennis	Obstacle Course Football	9
10	Shrinky Dinks Puzzles Jump rope	DIY Mason Jars Hang Man Soccer	DIY Bird Food Tic-Tac-Toe Basketball	Watercolor Painting Sensory Sand Volleyball	Left Over Craft Day Outdoor Chalk Indoor Aerobics	16
17	Coaster Painting Sensory Sand Dodgeball	Ceramic Day Charades Volleyball	Bookmark Number Painting Handball	UV Resin Crafts Connect Four Football	Tie-dye Day Soccer	23
24	Memorial Day - Community Centers Closed	Canvas Painting Tennis	Animal Poke Art Jump Rope	Paint By Number Pool Table Exercise Bingo	Flower Magnet Painting Jenga Handball	30
31						



SCIENCE CLUB

**RETURNING IN
SEPTEMBER**




LAFAYETTE NEIGHBORHOOD CENTER

 www.fresno.gov/parks

 @PARCSFresno

 @PARCSFresno

 (559) 621-7529

EVENTS

OPEN HOUSE

Date: Friday, May 8th

Time: 4:00 PM to 6:00 PM

Discover everything our center has to offer with a fun-filled day of activities, tours, meet and greet opportunities. Families and community members of all ages are invited to explore our facilities, learn about upcoming programs, and connect with our staff. Let's celebrate community, fun, and recreation together!

SCAN TO SEE MORE EVENTS



Services of an interpreter and additional accommodations such as assistive listening devices can be made available. Request for accommodations should be made more than five working days but no later than 48 hours prior to the scheduled program/event. Please contact 621-PLAY (7529).



SPECIAL HOURS

Homework Help

Monday - Friday
3:00 PM - 4:30 PM

Arts and Crafts

Monday - Friday
4:30 PM - 6:00 PM

Handball

Monday - Friday
3:00 PM - 6:00 PM