



# PINEDALE COMMUNITY CENTER

## AFTER SCHOOL PROGRAM ACTIVITIES

# FEBRUARY 2026

7170 N San Pablo Ave.  
Fresno, CA 93650

**(559) 621-7529**

### Center Hours

**Monday - Friday**  
10:00 AM - 7:00 PM  
**Saturday**  
12:00 PM - 5:00 PM

### After School Program

Monday - Friday  
1:00 PM - 6:00 PM

### Meal Service

Monday - Friday  
3:00 PM - 5:00 PM

- **Enrichment**
- **Arts and Crafts**
- **Snack**
- **Physical Activity**
- **Homework Help**

Ages 5 - 17. All activities are free of charge.

### Stay Connected

[www.fresno.gov/parks](http://www.fresno.gov/parks)

[f](#) @PARCSFresno

[i](#) @PARCSFresno

SUN	MON	TUE	WED	THU	FRI	SAT
<b>Special Notes from Center.</b> Children ages 5 and under must be accompanied by an adult. All participants of the After School Program must wear closed-toe shoes.						
1	2 <b>Beaded Heart</b>  <b>Bucket Kickball</b>	3 <b>Bouquet of Hearts</b>  <b>Bucket Kickball</b>	4 <b>Science Club: Zoology</b>  <b>Balloon Volleyball</b>	5 <b>DIY Heart Photo Display</b>  <b>Musical Hula Hoops</b>	6 <b>Flower Pens</b>  <b>Laser Tag</b>	7 <b>OPEN REC</b>
8	9 <b>DIY Drawstring</b>  <b>Red Light Green Light</b>	10 <b>Valentines Cards</b>  <b>Volleyball Square</b>	11 <b>Fluffy Slime</b>  <b>Tag</b>	12 <b>Candy Grams</b>  <b>Capture the Flag</b>	13 <b>Love Bug</b>  <b>Pool Noodle Field Hockey</b>	14 <b>OPEN REC</b>  
15	16 <b>Presidents' Day - Community Centers Closed</b>	17 <b>Marble Heart Craft</b>  <b>Fishbowl Frenzy</b>	18 <b>Science Club No Sew Heart Pillow</b> <b>Clean Your Room</b>	19 <b>Tissue Paper Heart</b>  <b>Clap &amp; Catch</b>	20 <b>Draw Along: Cupid</b>  <b>Scooter Racing</b>	21 <b>OPEN REC</b>
22	23 <b>Heart Cookie Decorating</b>  <b>Drawing Challenge</b>	24 <b>Paint Along: Sweethearts</b>  <b>Balloon Volleyball</b>	25 <b>What's In the Box Challenge</b>  <b>Polaroid Photo Frame</b>	26 <b>Fuse Beads</b>  <b>Freeze Tag</b>	27 <b>E- Sports</b>  <b>Head Shoulders Catch</b>	28 <b>OPEN REC</b>

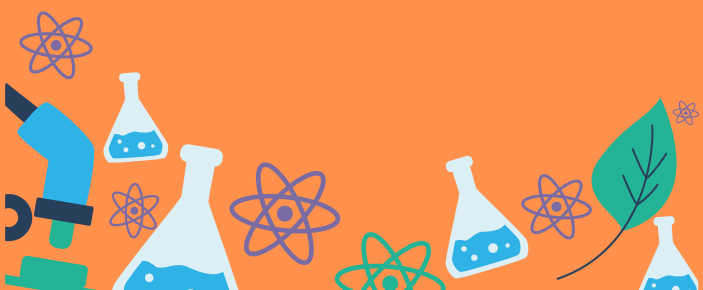


## SCIENCE CLUB

### ZOOLOGY

**Dates:** February 4<sup>th</sup> & 18<sup>th</sup>

**Time:** 2:00 PM - 3:00 PM




## PINEDALE COMMUNITY CENTER

 [www.fresno.gov/parks](http://www.fresno.gov/parks)

 @PARCSFresno

 @PARCSFresno

 (559) 621-7529

## EVENTS

### KENDAMA CLUB

**Date:** Thursdays (no class Feb 12)

**Time:** 4:00 PM - 6:00 PM

Join our weekly Kendama Club to build hand-eye coordination, confidence, and teamwork - all while having fun!



Registration Required\*

### FAMILY PAINT NIGHT

**Date:** Thursday, February 12, 2026

**Time:** 4:00 PM - 6:00 PM

Unleash the inner artist within! Bring the entire family for this fun, self-paced, self-led paint night!



## SCAN TO SEE MORE EVENTS



Services of an interpreter and additional accommodations such as assistive listening devices can be made available. Request for accommodations should be made more than five working days but no later than 48 hours prior to the scheduled program/event. Please contact 621-PLAY (7529).



## SPECIAL HOURS

### February

#### Presidents' Day

Monday, February 16

Center Closed

#### Open Rec

Monday - Friday

1:00 PM - 2:30 PM

Saturdays

12:00 PM - 5:00 PM