



MAXIE L. PARKS COMMUNITY CENTER

AFTER SCHOOL PROGRAM ACTIVITIES

FEBRUARY 2026

1802 E California Ave.
Fresno, CA 93706

(559) 621-7529

Center Hours

Monday - Friday
10:00 AM - 7:00 PM
Saturday
12:00 PM - 5:00 PM

After School Program

Monday - Friday
1:00 PM - 6:00 PM

Meal Service

Monday - Friday
3:00 PM - 5:00 PM

- **Enrichment**
- **Arts and Crafts**
- **Snack**
- **Physical Activity**
- **Homework Help**

Ages 5 - 17. All activities are free of charge.

Stay Connected

www.fresno.gov/parks

[f](#) @PARCSFresno

[i](#) @PARCSFresno

SUN	MON	TUE	WED	THU	FRI	SAT
Special Notes from Center. Open Gym: Monday, Tuesday, & Friday: 11:00 AM - 6:30 PM Wednesday: 2:00 PM - 6:30 PM Thursday: 1:00 PM - 6:30 PM *Half court play during After School Program						
1	2 Heart Caterpillar Soccer Hoopla	3 Q-Tip Heart Flag Football	4 Heart Names Soccer	5 Beaded Heart Badminton	6 Heart Garland H.O.R.S.E.	7 Fuse Beads Open Gym
8	9 Fizzing Hearts Human Hungry Hippos	10 Colorful Trumpet Obstacle Course	11 Heart Suncatcher Bowling	12 Heart Dog Foam Axe Toss	13 Fill the Heart Cornhole	14 Chalk Heart Open Gym
15	16 Presidents' Day - Community Centers Closed	17 Tambourine Craft Kickball	18 DIY Jewelry Builders & Bulldozers	19 Clay Creations Mardi Gras Masks Dodgeball	20 Movie Night Paper Squishies	21 Dragonflies Open Gym
22	23 EZ Eats Shrinky Dinks Marbles	24 Heart Painting 4 Square Volleyball	25 Monsters Knockout	26 Craft Stick Airplane Relay Races	27 Beaded Suncatcher Match the Colors	28 Rock Painting Table Tennis Tournament No Open Gym

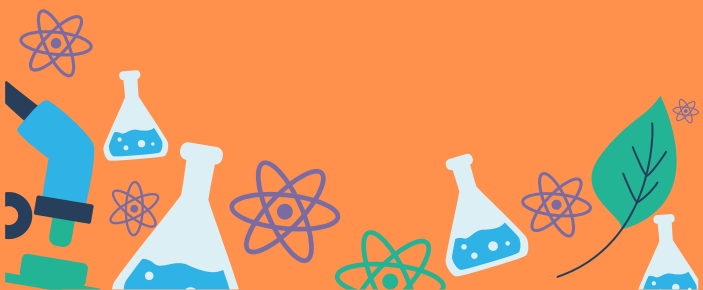


SCIENCE CLUB

ZOOLOGY

Dates: February 10th & 24th

Time: 5:00 PM - 6:00 PM




MAXIE L. PARKS COMMUNITY CENTER

 www.fresno.gov/parks

 @PARCSFresno

 @PARCSFresno

 (559) 621-7529

EVENTS

DIY VALENTINE'S MAILBOXES

Date: Thursday, February 5, 2026

Time: 4:00 PM - 5:30 PM

Create your own Valentine mailbox. During this workshop, staff will guide you step-by-step throughout the process.



CLAY CREATIONS

Date: Thursday, February 19, 2026

Time: 4:00 PM - 5:00 PM

Monthly ceramics program. Paint your creation and take it home the same day!



FAMILY PAINT NIGHT

Date: Thursday, February 26, 2026

Time: 4:00 PM - 6:00 PM

Join us for a special family night activity. Choose from a selection of images and paint at your own pace.



SCAN TO SEE MORE EVENTS AT MAXIE L. PARKS



Services of an interpreter and additional accommodations such as assistive listening devices can be made available. Request for accommodations should be made more than five working days but no later than 48 hours prior to the scheduled program/event. Please contact 621-PLAY (7529).



SPECIAL HOURS

Gym Hours

Itty Bitty Clubhouse

Wednesdays

11:00 AM - 1:00 PM

Community Table Tennis

Thursdays

10:15 AM - 12:15 PM

Table Tennis Tournament on 2/28

Open Gym

Saturdays

12:30 PM - 4:30 PM

No Open Gym on 2/28