



# MARY ELLA BROWN COMMUNITY CENTER

## AFTER SCHOOL PROGRAM ACTIVITIES

# FEBRUARY 2026

1350 E Annadale Ave.  
Fresno, CA 93706

(559) 621-7529

### Center Hours

Monday - Friday  
10:00 AM - 7:00 PM

### After School Program

Monday - Friday  
1:00 PM - 6:00 PM

### Meal Service

Monday - Friday  
3:00 PM - 5:00 PM

- **Enrichment**
- **Arts and Crafts**
- **Snack**
- **Physical Activity**
- **Homework Help**

Ages 5 - 17. All activities are free of charge.

### Stay Connected

- [www.fresno.gov/parks](http://www.fresno.gov/parks)
- [f](#) @PARCSFresno
- [i](#) @PARCSFresno

SUN	MON	TUE	WED	THU	FRI	SAT
<b>Special Notes from Center.</b> EZ Eats Teen Cooking Class: Wednesday, February 4 <sup>th</sup> 3:30-5:30PM Clay Creations Ceramics Program: Thursday, February 26 <sup>th</sup> 3:30-4:30PM						
1	2 <b>Love You Too Pieces Craft</b>  <b>Obstacle Course</b>	3 <b>DIY Valentine's Day Cards</b>  <b>Fitness Bingo</b>	4 <b>EZ Eats Threaded Heart</b>  <b>Musical Basketball</b>	5 <b>Paper Heart Wreath</b>  <b>Charades</b>	6 <b>Super Snack Showdown</b>  <b>Football Crafts</b>	7
8	9 <b>DIY Valentine's Wreath</b>  <b>Dodgeball</b>	10 <b>Valentine Button Art</b>  <b>Silent Ball</b>	11 <b>Heart Beadie Buddies</b>  <b>4 Square Volleyball</b>	12 <b>Tissue Paper Heart</b>  <b>Balloon Cup Game</b>	13 <b>Felt Monsters</b>  <b>Cart Racing</b>	14 
15	16 <b>Presidents' Day - Community Centers Closed</b>	17 <b>Yarn Monsters</b>  <b>Minefield</b>	18 <b>DIY Jewelry</b>  <b>Glow in the Dark Badminton</b>	19 <b>Sequin Art</b>  <b>Basketball</b>	20 <b>Sensory Bottles</b>  <b>Human Hungry Hippos</b>	21
22	23 <b>DIY Dream Catchers</b>  <b>Floor is Lava</b>	24 <b>Yarn Bracelets</b>  <b>Head, Shoulders, Knees, Cone</b>	25 <b>Tie Dye</b>  <b>Hoop Hop</b>	26 <b>Clay Creations Shrinky Dinks</b> <b>Flip Cup Challenge</b>	27 <b>Fuse Beads</b>  <b>Double Dutch</b>	28

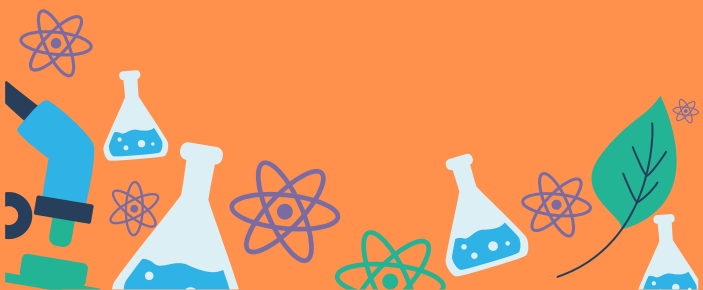


## SCIENCE CLUB

### ZOOLOGY

**Dates:** March 5<sup>th</sup> & 19<sup>th</sup>

**Time:** 5:00 PM - 6:00 PM




## MARY ELLA BROWN COMMUNITY CENTER

 [www.fresno.gov/parks](http://www.fresno.gov/parks)

 @PARCSFresno

 @PARCSFresno

 (559) 621-7529

## EVENTS

### EZ EATS TEEN COOKING CLASS

**Date:** Wednesday, February 4, 2026

**Time:** 3:30 PM - 5:30 PM

Learn basic culinary skills and make a meal under 30 minutes. Open to teens ages 11-17.

### SUPER SNACK SHOWDOWN

**Date:** Friday, February 6, 2026

**Time:** 4:00 PM - 6:00 PM

Get into the Super Bowl spirit! Football themed games & crafts and show off your skills in the Madden Tournament.

### FAMILY PAINT NIGHT

**Date:** Friday, February 13, 2026

**Time:** 4:00 PM - 6:00 PM

Join us for a special family night activity. Choose from a selection of images and paint at your own pace.

### CLAY CREATIONS

**Date:** Thursday, February 26, 2026

**Time:** 3:30 PM - 4:30 PM

Monthly ceramics program. Paint your creation and take it home the same day!

SCAN TO SEE  
MORE  
EVENTS



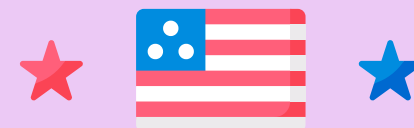
Services of an interpreter and additional accommodations such as assistive listening devices can be made available. Request for accommodations should be made more than five working days but no later than 48 hours prior to the scheduled program/event. Please contact 621-PLAY (7529).



## SPECIAL HOURS

### Center Closed

Monday, February 16<sup>th</sup>, 2026  
Presidents' Day



**PRESIDENT'S  
— DAY —**