



INSPIRATION PARK

AFTER SCHOOL PROGRAM ACTIVITIES

FEBRUARY 2026

5770 W Gettysburg
Ave. Fresno, CA 93722

(559) 621-7529

Center Hours

Monday - Friday
10:00 AM - 7:00 PM
Saturday
12:00 PM - 5:00 PM

After School Program

Monday - Friday
1:00 PM - 6:00 PM

Meal Service

Monday - Friday
3:00 PM - 5:00 PM

- **Enrichment**
- **Arts and Crafts**
- **Snack**
- **Physical Activity**
- **Homework Help**

Ages 5 - 17. All activities are free of charge.

Stay Connected

www.fresno.gov/parks

@PARCSFresno

@PARCSFresno

SUN	MON	TUE	WED	THU	FRI	SAT
1	2 Gem Art Mondays on Mat	3 Science Club Volleyball	4 Heart Suncatchers 4 Corners	5 Valentine's Cards Musical Chairs	6 Fuse Beads Cupid Says	7 Open Rec
8	9 Shrinky Dinks Limbo	10 Slime Time Park Walk	11 Pillows Chinese Jump Rope	12 Origami Hearts Basketball	13 Valentine's Dance Cake Walk	14 Open Rec
15	16 Presidents' Day - Community Centers Closed	17 Science Club Corn Hole	18 Clay Play Just Dance	19 Paint Night Jump Rope	20 Family Bingo Night Duck, Duck Goose	21 Open Rec
22	23 Foil Art Tag	24 DIY Crystals Roller Relay	25 Slime Time Red Light, Green Light	26 Ceramics Musical Chairs	27 Fuse Beads Soccer	28 Art Hive

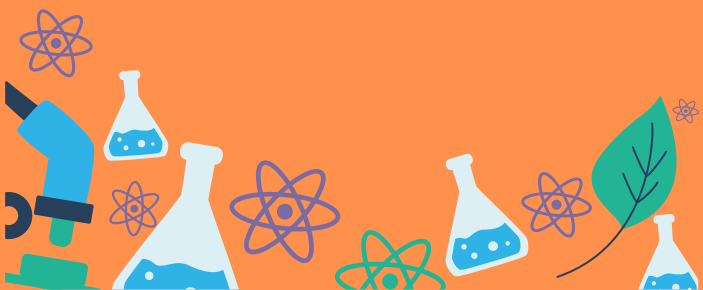


SCIENCE CLUB

ZOOLOGY

Dates: February 3rd & 17th

Time: 3:30 PM - 4:30 PM




INSPIRATION PARK

 www.fresno.gov/parks

 @PARCSFresno

 @PARCSFresno

 (559) 621-7529

EVENTS

FAMILY PAINT NIGHT

Date: February 12th

Time: 4:00 PM to 6:00 PM

Trace, Paint & Create!

Grab the whole crew and let your creativity shine! Choose from a variety of printed designs, trace your favorite onto a canvas using transfer paper and a pencil, then bring it to life with your own colorful twist. No drawing skills needed, just imagination and fun!

MONDAYS ON THE MAT

Date: Every Monday of the Month

Time: Kids- 4:00PM- 5:00PM

Adults-5:00 PM - 6:00 PM

SCAN TO SEE MORE EVENTS



Services of an interpreter and additional accommodations such as assistive listening devices can be made available. Request for accommodations should be made more than five working days but no later than 48 hours prior to the scheduled program/event. Please contact 621-PLAY (7529).



SPECIAL HOURS

Homework Help

Monday - Friday

3:00 PM - 4:00 PM

Outdoor Activity

Monday - Friday

5:00 PM - 6:00 PM

Center Closed

Monday, February 16th, 2026

Presidents' Day