



EL DORADO NEIGHBORHOOD CENTER

AFTER SCHOOL PROGRAM ACTIVITIES

FEBRUARY 2026

1343 E Barstow Ave.
Fresno, CA 93710

(559) 621-7529

Center Hours

Monday - Friday
1:00 PM - 6:00 PM

After School Program

Monday - Friday
1:00 PM - 6:00 PM

Meal Service

Monday - Friday
3:00 PM - 5:00 PM

- **Enrichment**
- **Arts and Crafts**
- **Snack**
- **Physical Activity**
- **Homework Help**

Ages 5 - 17. All activities are free of charge.

Stay Connected

www.fresno.gov/parks
[f](#) @PARCSFresno
[i](#) @PARCSFresno

SUN	MON	TUE	WED	THU	FRI	SAT
Special Notes from Center. Children ages 5 and under must be accompanied by an adult. All participants of the After School Program must wear closed-toe shoes.						
1	2 Draw Along: Cupid Soccer	3 Custom Headbands Tag	4 Science Club: Zoology Dodgeball	5 Pictionary Sharks & Minnows	6 BINGO Pen Making	7
8	9 Paint Along: Sweet Cupcake Red Light Green Light	10 Love Bug Craft Badminton Toss	11 Valentine Rice Crispy Treats Valentines Cards	12 Valentine Jeopardy Heart Stamp Bouquet	13 Palentine's Day Celebration Valentines Cards	14
15	16 Presidents' Day - Community Centers Closed	17 Tissue Paper Heart Pool Noodle Hockey	18 Science Club: Zoology Musical Chairs	19 Marable Heart Hide & Seek	20 Love Crocodiles Four Corners	21
22	23 Paint Along: Sweetheart Candies Chalk Art	24 Valentine Fish Cornhole	25 Cooking Class: Fruit Salad Balloon Volleyball	26 Heart Pillow Freeze Tag	27 Birthday Celebration Nex Playground	28

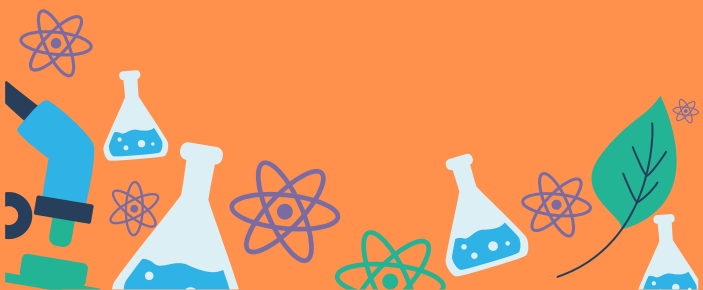


SCIENCE CLUB

EARTH SCIENCE

Dates: February 4th & 18th

Time: 3:30 PM - 4:30 PM



EVENTS

PALENTINE'S DAY CELEBRATION

Date: Friday, February 13, 2026

Time: 3:30 PM - 5:30 PM

Celebrate friendship with music, crafts, and sweet treats! A fun and festive way to show love for your pals.



FAMILY PAINT NIGHT

Date: Tuesday, February 17, 2026

Time: 2:00 PM - 4:00 PM

Unleash the inner artist within! Bring the entire family for this fun, self-paced, self-led paint night! *outdoor event*



SCAN TO SEE MORE EVENTS



Services of an interpreter and additional accommodations such as assistive listening devices can be made available. Request for accommodations should be made more than five working days but no later than 48 hours prior to the scheduled program/event. Please contact 621-PLAY (7529).



SPECIAL HOURS

February

Presidents' Day

Monday, February 16, 2026

Center Closed

Open Recreation

Monday - Friday


1:00 PM - 3:00 PM

EL DORADO NEIGHBORHOOD CENTER

 www.fresno.gov/parks

 @PARCSFresno

 @PARCSFresno

 (559) 621-7529