

Contact Information

LSA Associates, Inc.

Primary Contact: Kyle Simpson, Principal Environmental Planner

Phone: (559) 490-1210

Email: kyle.simpson@lsa.net

Address: 2565 Alluvial Ave., Suite 112, Clovis, CA 93611

Website: www.lsa.net



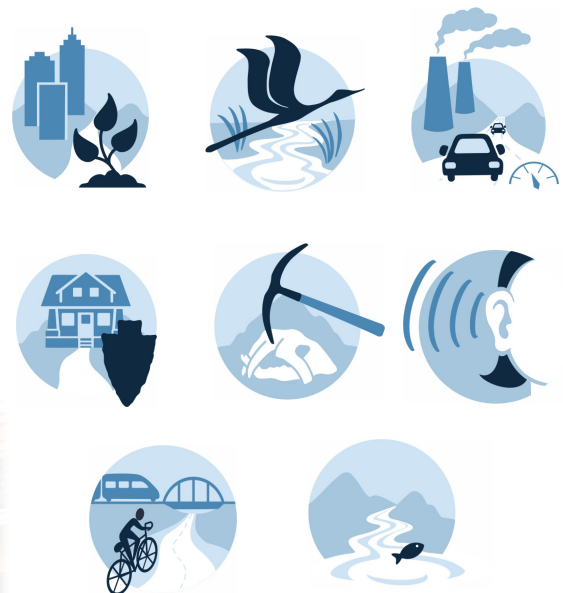
Areas of Expertise

About the Firm

LSA is a multidisciplinary environmental planning and consulting firm with decades of experience preparing and reviewing **California Environmental Quality Act (CEQA)** and **National Environmental Policy Act (NEPA)** documents. The firm provides comprehensive support for community development and land use planning, offering both planning expertise and specialized technical studies in areas such as agricultural resources, air quality, biological resources and permitting, cultural and tribal resources, greenhouse gas emissions, noise and vibration, transportation, and water quality. LSA's staff includes seasoned CEQA and NEPA practitioners who have prepared a wide range of environmental documents, include supporting documentation for **CEQA exemptions**, **Initial Studies for Negative Declarations (IS/NDs)** and **Mitigated Negative Declarations (IS/MNDs)**, as well as **Environmental Impact Reports (EIRs)**. LSA's documents are prepared to be legally sound, clearly written, and accessible to planners, decision-makers, attorneys, and the public. LSA's staff includes certified planners and LSA maintains active collaboration with CEQA attorneys to ensure that the latest case law and policy guidance are applied. The firm emphasizes clarity, strong organization, informative graphics, and thorough background explanations to support understanding of environmental issues and mitigation measures.

Services and Expertise

- Environmental Analysis and Review
- Biological Resources
- Air Quality/Greenhouse Gas Emissions and Sustainability
- Cultural and Historic Resources
- Paleontological Resources
- Noise and Vibration
- Traffic/Transportation and Vehicle Miles Traveled
- Water Quality
- Agricultural Resources



Project Highlights

Vehicle Miles Traveled Reduction Program EIR

City of Fresno

Tower District Specific Plan EIR

City of Fresno

EIR for Vesting Tentative Tract Map No. 6360

City of Fresno

Heritage Grove Specific Plan EIR

City of Clovis

Tract Map 6343 EIR

City of Clovis

Village D Specific Plan EIR

City of Madera



Hourly Billing Rates

Job Classification	Hourly Rate Range
Principal (Environmental, Planning, Transportation, Air/Noise, Cultural, Biology, GIS)	\$190 - \$400
Associate (Environmental, Planning, Transportation, Air/Noise, Cultural, Biology, GIS)	\$150 - \$250
Senior Technical Specialist (Environmental, Planning, Transportation, Air/Noise, Cultural, Biology, GIS)	\$130 - \$235
Technical Specialist (Environmental, Planning, Transportation, Air/Noise, Cultural, Biology, GIS)	\$100 - \$165
Assistant Technical Specialist (Environmental, Planning, Transportation, Air/Noise, Cultural, Biology, GIS)	\$85 - \$130
Field Services	\$85 - \$120
Graphics	\$125 - \$150
Office/Project Assistant	\$100 - \$140
Research Assistant/Intern	\$75 - \$100
Word Processing/Technical Editing	\$105 - \$135

In-House Direct Costs

Description	Unit Cost	Description	Unit Cost
Reproduction (8.5 x 11) B/W	\$0.07 per page	Total Station Surveying Instrument	\$50.00 per day
Reproduction (8.5 x 11) Color	\$0.40 per page	Level (Laser or Optical)	\$25.00 per day
Reproduction (11 x 17) B/W	\$0.10 per page	Laser Rangefinder	\$25.00 per day
Reproduction (11 x 17) Color	\$0.75 per page	Sound Meter	\$75.00 per day
CD Production	\$5.00 per CD	Sound Meter with Velocity Transducer	\$85.00 per day
USB Flash Drive	\$5.00 per drive	Aerial Photo	Cost
Plotting	\$3.75 per sq ft	Boat Rental	Cost
Aerial Drone	\$200.00 per day	Water Quality Meter	\$25.00 per day
Mileage (On-Road)	Current federal rate	Night Vision Goggles	\$50.00 per unit per night
Mileage (Off-Road)	Current federal rate	Wildlife Camera	\$25.00 per day
GPS Unit	\$75.00 per day		