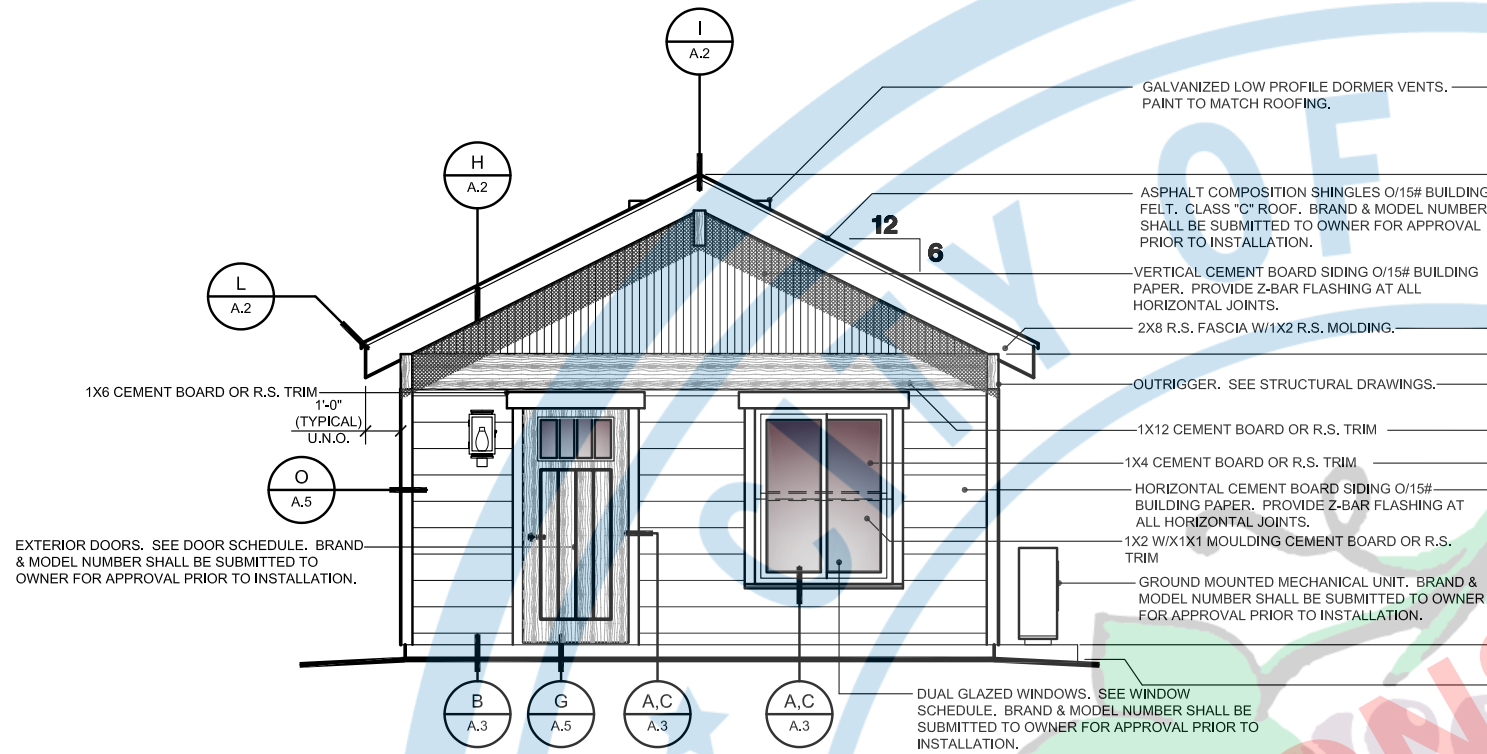


NOT FOR CONSTRUCTION

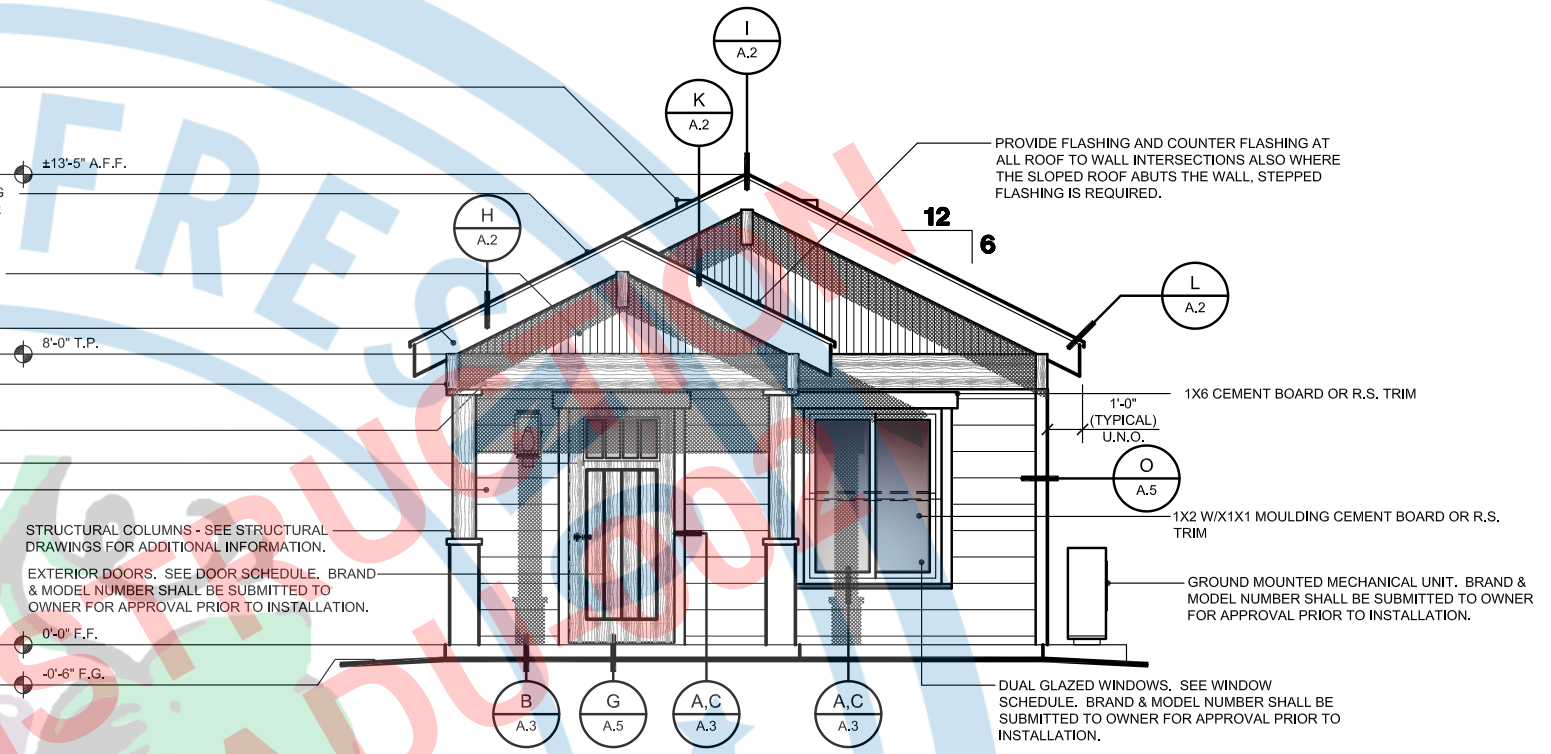
OCT. 12 18



## FRONT ELEVATION

CRAFTSMAN

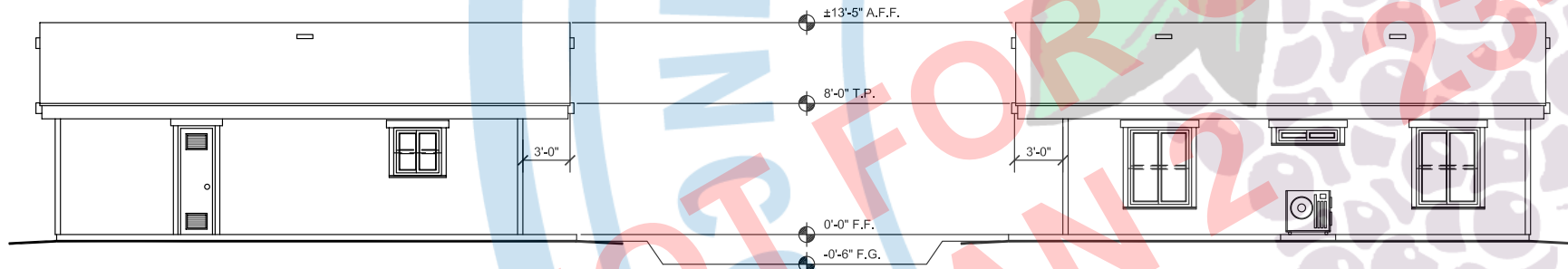
MATERIALS AND SPECIFICATIONS ABOVE ARE APPLICABLE TO ALL SIDES OF THE ACCESSORY DWELLING UNIT.



## FRONT ELEVATION

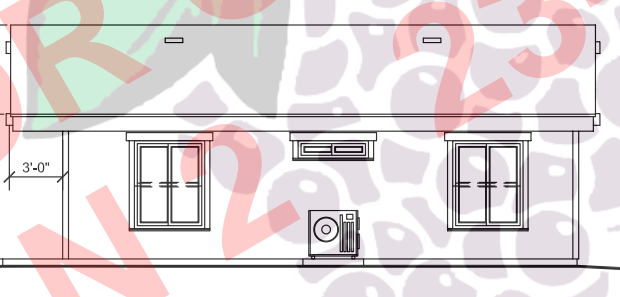
CRAFTSMAN W/PORCH OPTION

MATERIALS AND SPECIFICATIONS ABOVE ARE APPLICABLE TO ALL SIDES OF THE ACCESSORY DWELLING UNIT.



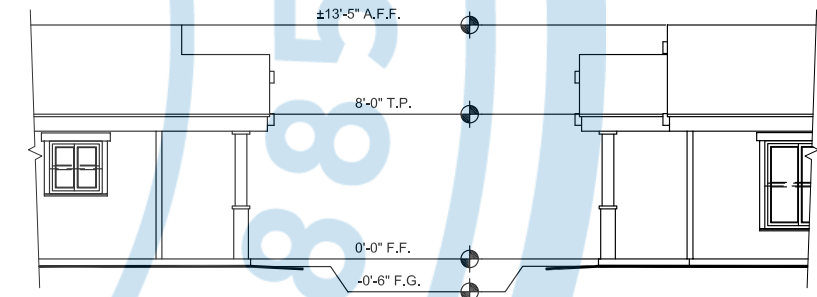
## LEFT ELEVATION

CRAFTSMAN



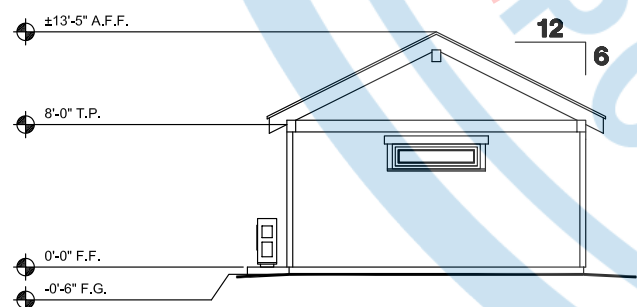
## RIGHT ELEVATION

CRAFTSMAN



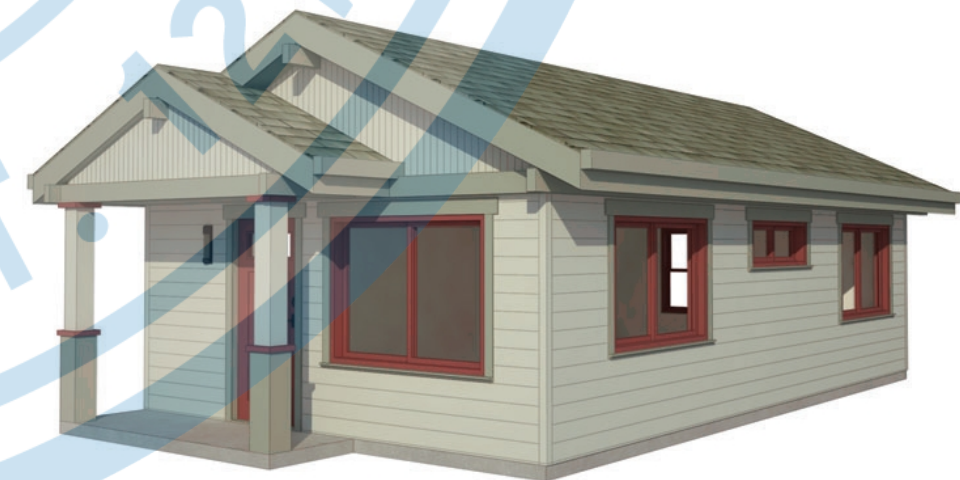
## LEFT & RIGHT ELEVATION

CRAFTSMAN W/PORCH OPTION

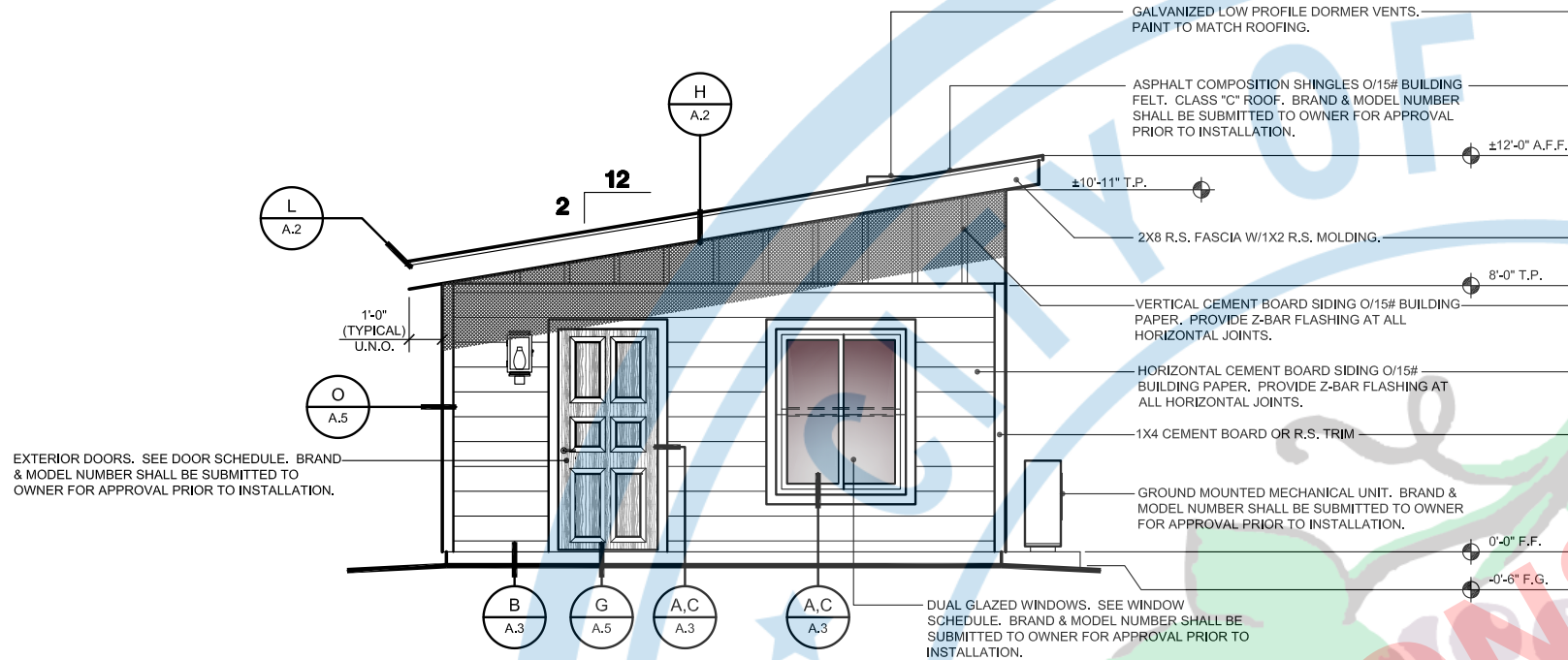


## REAR ELEVATION

CRAFTSMAN



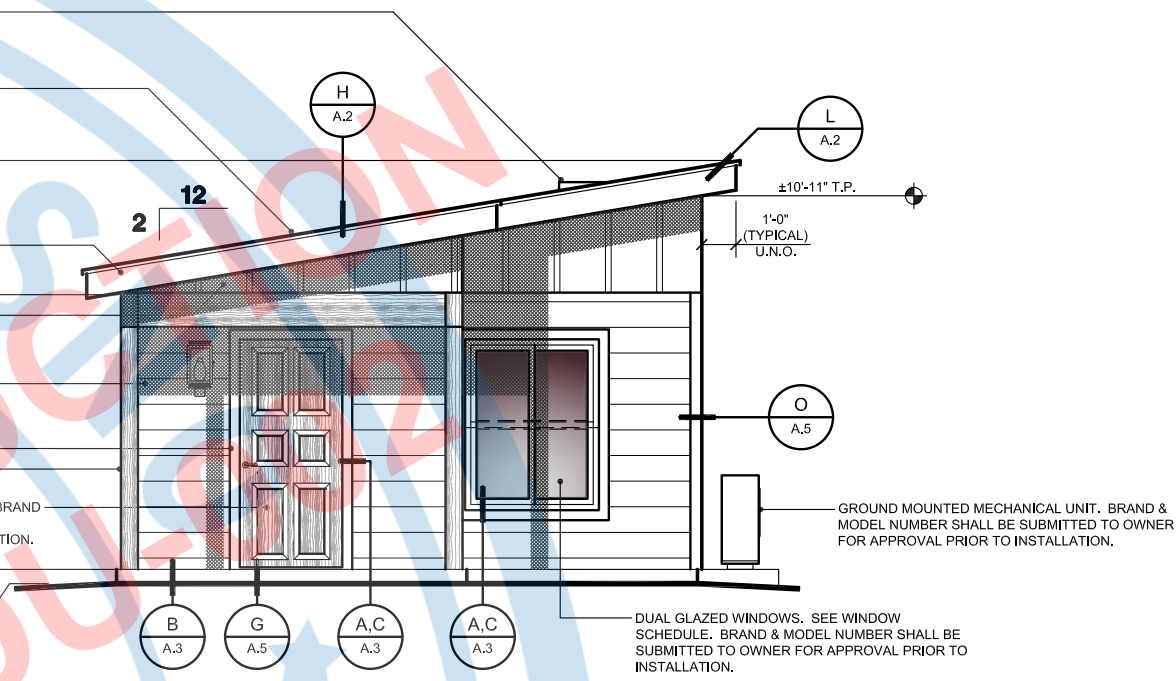




**FRONT ELEVATION**

CONTEMPORARY

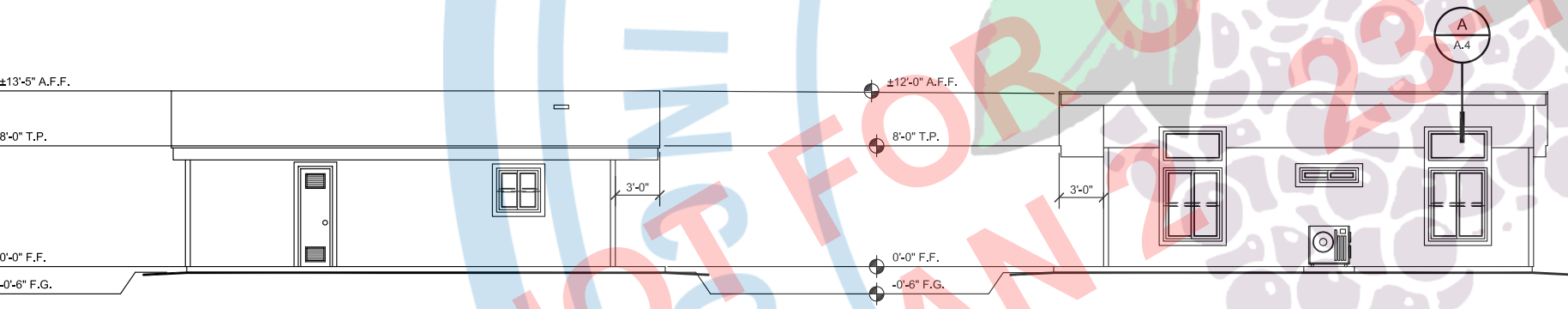
MATERIALS AND SPECIFICATIONS ABOVE ARE APPLICABLE TO ALL SIDES OF THE ACCESSORY DWELLING UNIT.



**FRONT ELEVATION**

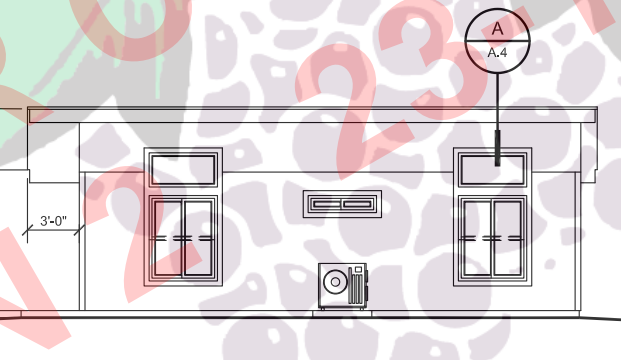
CONTEMPORARY W/PORCH OPTION

MATERIALS AND SPECIFICATIONS ABOVE ARE APPLICABLE TO ALL SIDES OF THE ACCESSORY DWELLING UNIT.



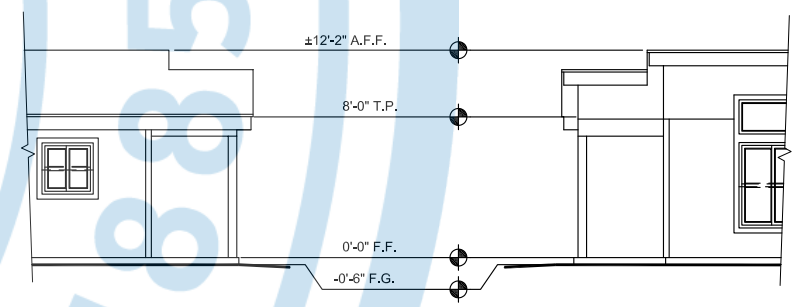
**LEFT ELEVATION**

CONTEMPORARY



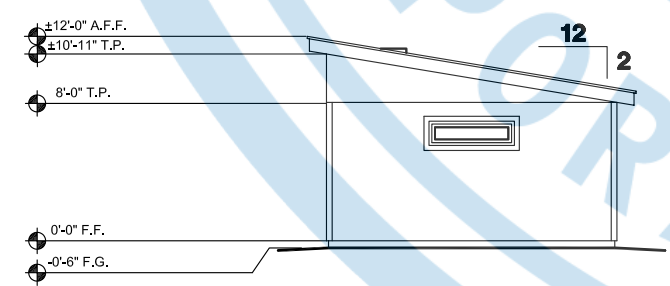
**RIGHT ELEVATION**

CONTEMPORARY



**LEFT & RIGHT ELEVATION**

CONTEMPORARY W/PORCH OPTION



**REAR ELEVATION**

CONTEMPORARY

