



FRESNO MILBURN OVERLOOK Conceptual Design Review

Community Meeting | November 15, 2023



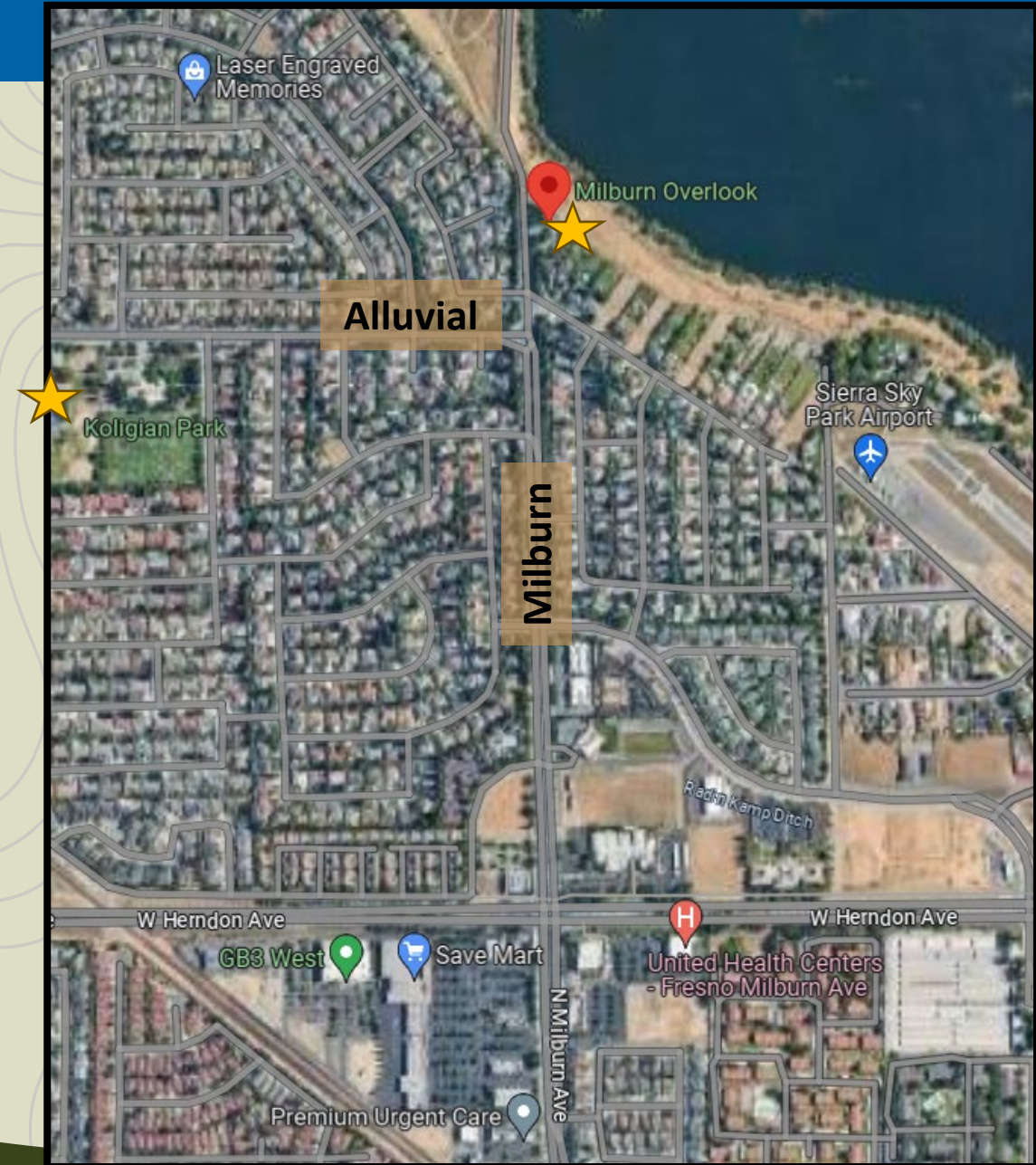
BACKGROUND

N/E corner of Alluvial/Milburn
Bullard Community Plan

0.6 acres

Needs:

- Enhanced lines of sight/landscaping
- Enhanced security
- Offsite access improvement



BACKGROUND

Needs:

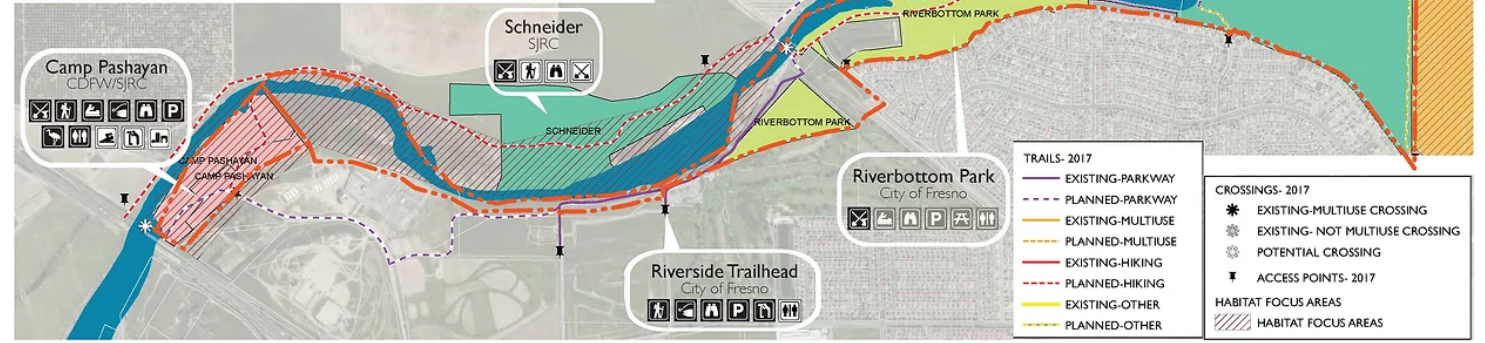
- Enhanced connection to river parkway

www.fresnobhc.org/WRAAP

PARKWAY MASTER PLAN

Icon Hierarchy

- | | | | | | | | | | | | | | | | | | | |
|--------------------------|------------------------|-----------------------------|------------------------|-------------------|---------|------|--------|--------------------|---------------------|-----------------------------|---------|--------|--------------------|-------------|-----------|------|--------|----------------|
| Black: Existing Features | Grey: Planned Features | White: Opportunity Features | Conservation Education | Cultural Interest | Fishing | Golf | Marina | Nature Observation | Equestrian Facility | Interpretive/Visitor Center | Parking | Picnic | Ecological Reserve | Restoration | Restrooms | Swim | Trails | Vista/Overlook |
|--------------------------|------------------------|-----------------------------|------------------------|-------------------|---------|------|--------|--------------------|---------------------|-----------------------------|---------|--------|--------------------|-------------|-----------|------|--------|----------------|



This diagram shows the portion of the San Joaquin River Parkway referred to as the 'Western Reaches'. Planned trail alignments and suggested programming is also shown along this 4-mile segment of the river.



FUNDING

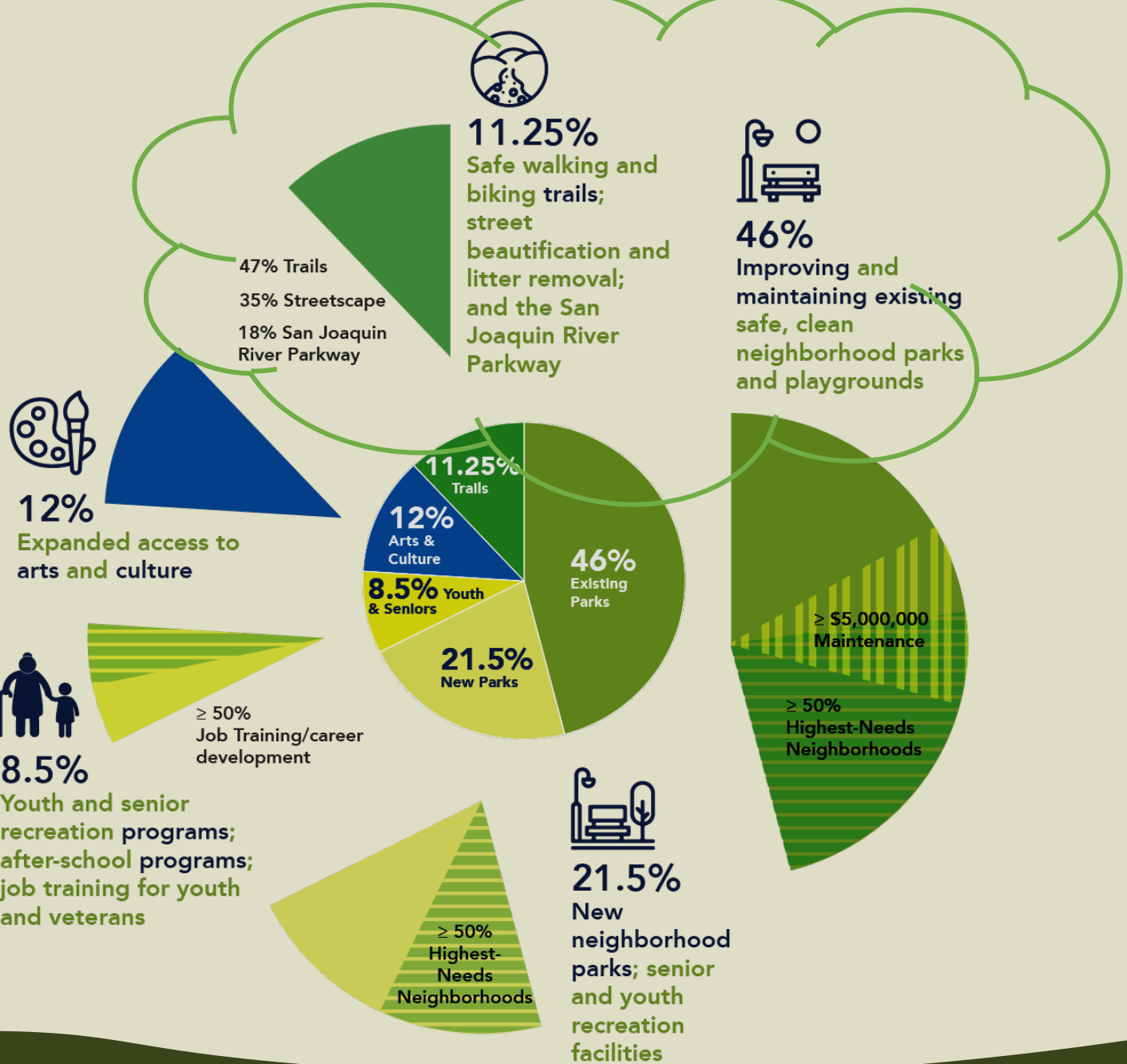
Measure P – Category 1

Improve and maintain existing parks

Measure P – Category 5

Safe walking and biking trails and beautification of the San Joaquin River Parkway

Total Project Budget – \$1.13m



TIMELINE

FY2024				FY2025				FY2026			
Jul – Sept 2023	Oct – Dec 2023	Jan – Mar 2024	Apr – Jun 2024	Jul – Sept 2024	Oct – Dec 2024	Jan – Mar 2025	Apr – Jun 2025	Jul – Sept 2025	Oct – Dec 2025	Jan – Mar 2026	Apr – Sept 2026

Conceptual
(Schematic) Design



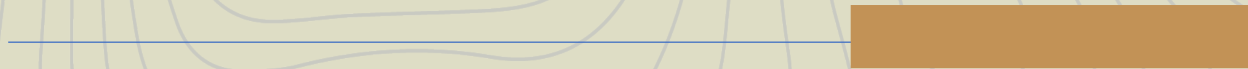
Design Development/
Construction Plans



Construction Bidding



Construction

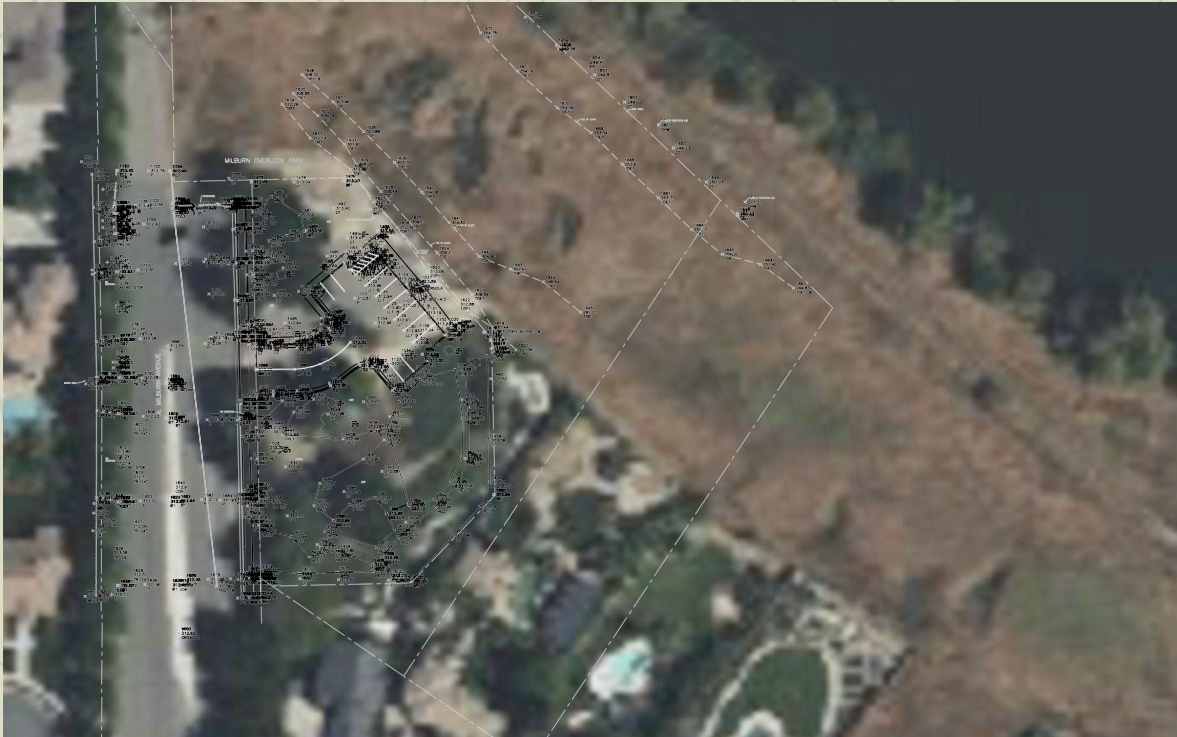


 Community Meeting

**construction tentatively scheduled to complete Fall 2025*



EXISTING CONDITIONS



NORTHEAST PERSPECTIVE



NORTHWEST PERSPECTIVE





SOUTHEAST PERSPECTIVE



SOUTH PERSPECTIVE



SOUTHEAST PERSPECTIVE



SOUTH PERSPECTIVE



CONCEPTUAL DESIGN

1. New 20x30' Trellis
2. Bench
3. Picnic Table
4. ADA Picnic Table
5. Trash Receptacle
6. Recycle Receptacle
7. Education Board
8. Binocular Station
9. Concrete Surfacing
10. Decomposed Granite Surfacing
11. Planting Area
12. Cobblestone
13. City Sidewalk
14. Perimeter Fencing
15. Accessible Parking Stall
16. Bike Racks
17. Concrete Block Wall



Site Renderings

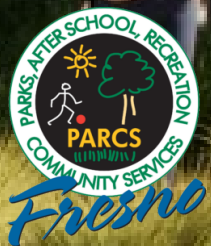


Site Renderings



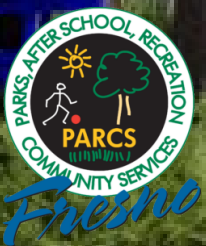
Northern Park Entry

Site Renderings



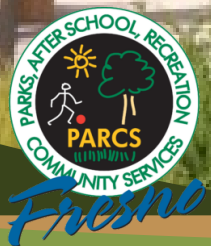
Northern Leading to Overlook

Site Renderings



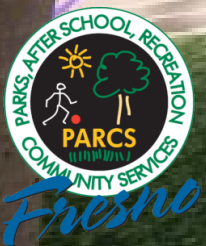
Pergola at Overlook

Site Renderings



Overlook View

Site Renderings



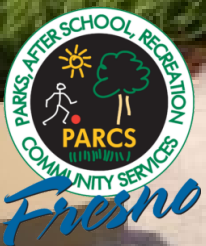
Southern Park Entry

Site Renderings



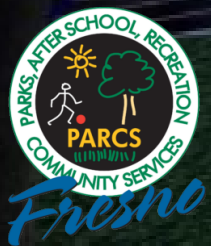
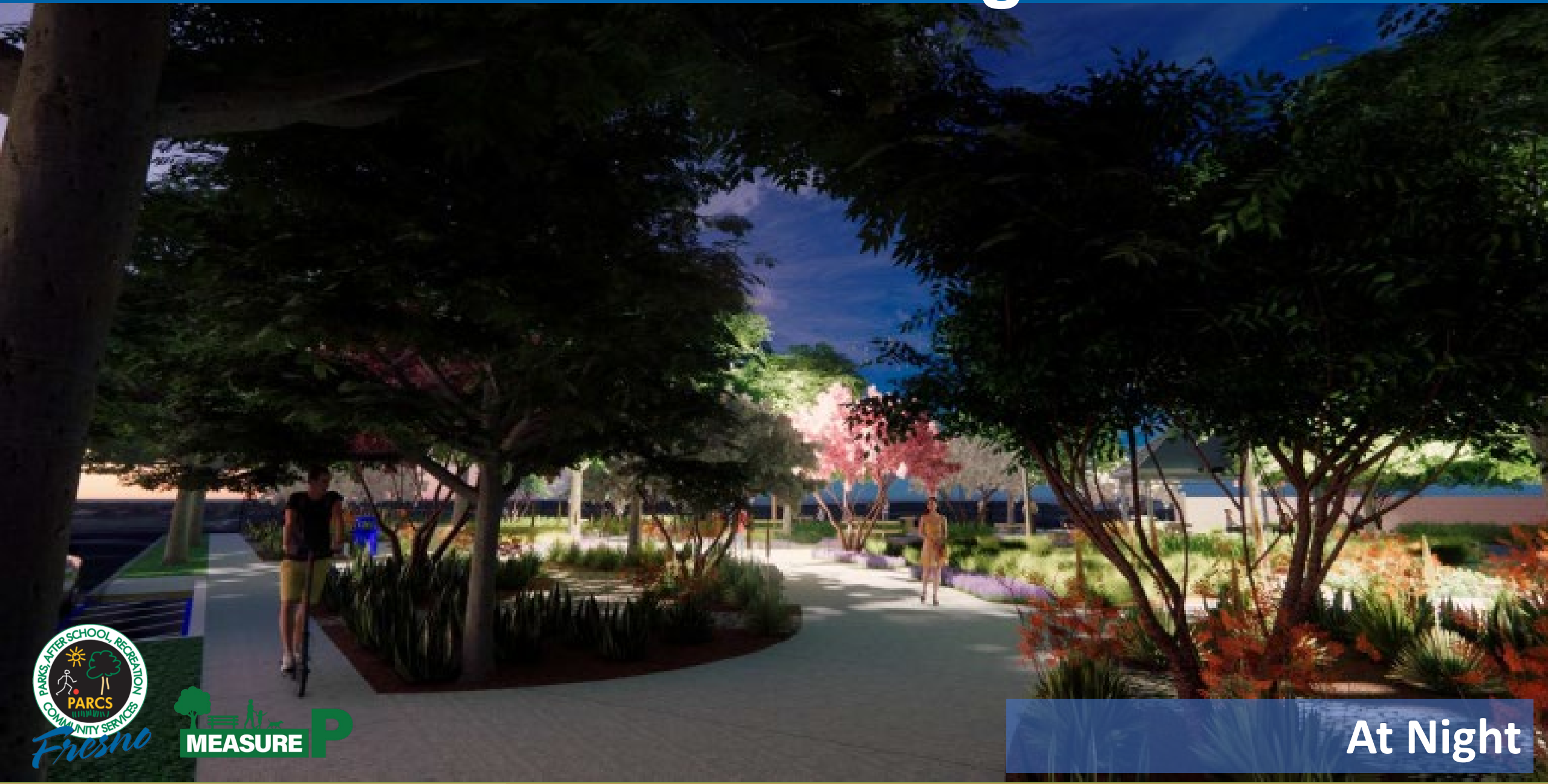
DG Walkway

Site Renderings



Park Edge

Site Renderings



At Night

POSSIBLE SITE FEATURES



EDUCATION BOARD



PROPOSED BENCH SEATING



PROPOSED SHADE STRUCTURE



POSSIBLE SITE FEATURES



PROPOSED NATIVE PLANTING



COBBLE



DECOMPOSED GRANITE AND NATIVE PLANTS

Your Park, Your Voice

Review open house boards

Provide your feedback via our comment form

Stay informed via www.fresno.gov/PARCS for future engagement opportunities and design updates!

Questions?

