

COMMUNITY OUTREACH

# MEETING

WELCOME



# Tonight's Meeting



**PROVIDING LIFE'S  
ESSENTIAL SERVICES**

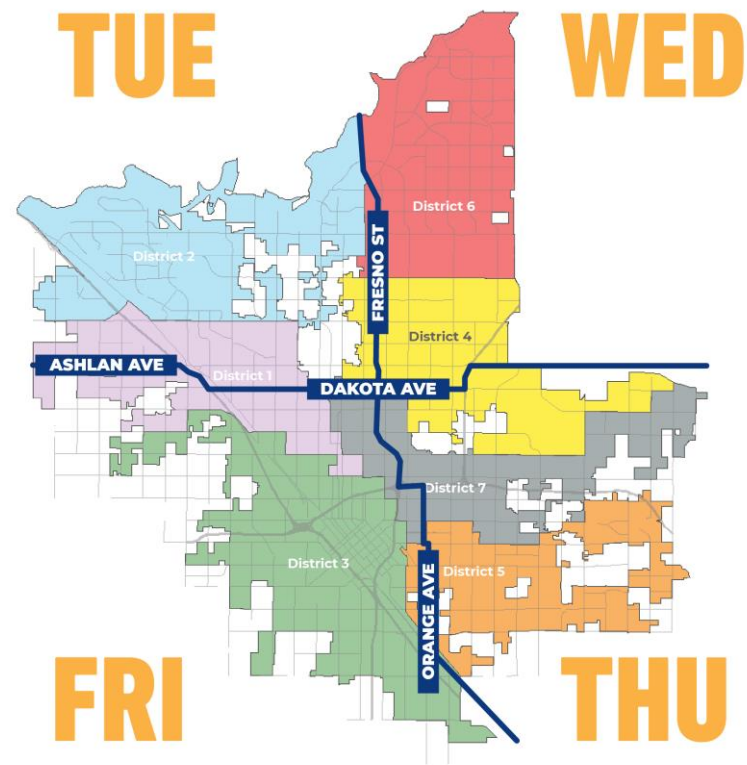
1. Solid Waste Management Division (SWMD) Provided Services
2. SWMD's Current Cost Realities and Financial Health
3. The Proposition 218 Rate-Setting Process



## Solid Waste Management Division

# Residential Program

- 119,000 customers
- 4 collection days per week
- 64 daily collection routes
- 353,000 carts
  - Gray – Solid Waste
  - Blue – Recycling
  - Green – Organics





# Solid Waste Management Division

# Additional Services





**Solid Waste  
Management  
Division**

---

# Current Service Levels

**Standard Service:  
\$25.37 per month**



**Alternate Service:  
\$19.20 per month**

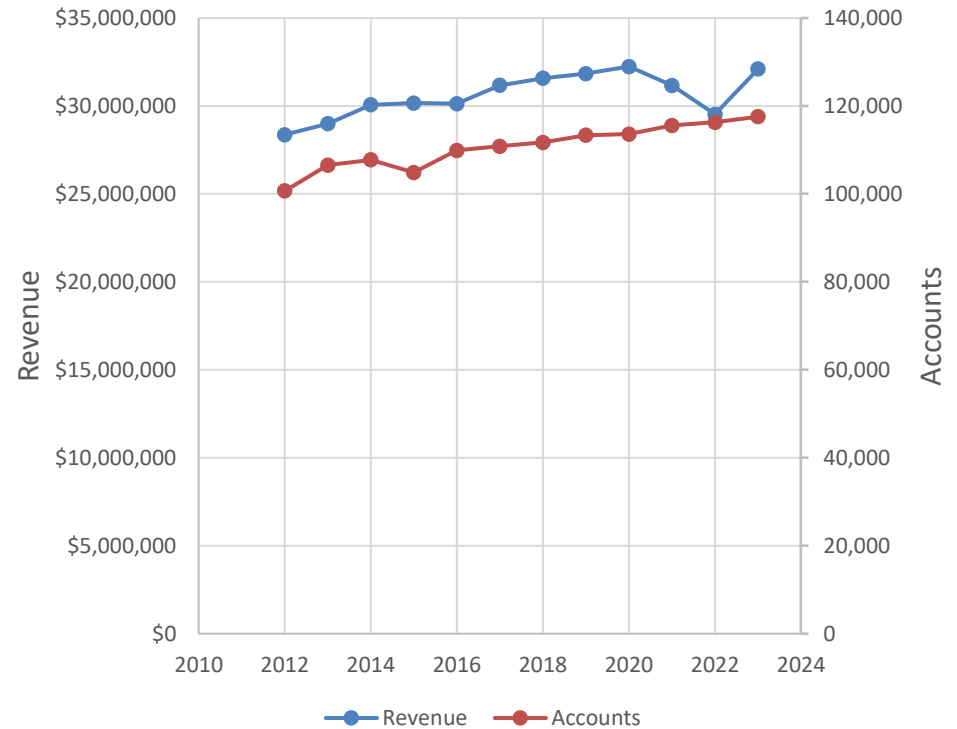




## Solid Waste Management Division

# Accounts and Annual Revenue

- Service Accounts
  - 103,000 in 2012
  - 119,000 today
- Revenues
  - \$28,356,483 in FY2012
  - \$32,234,917 in FY2023



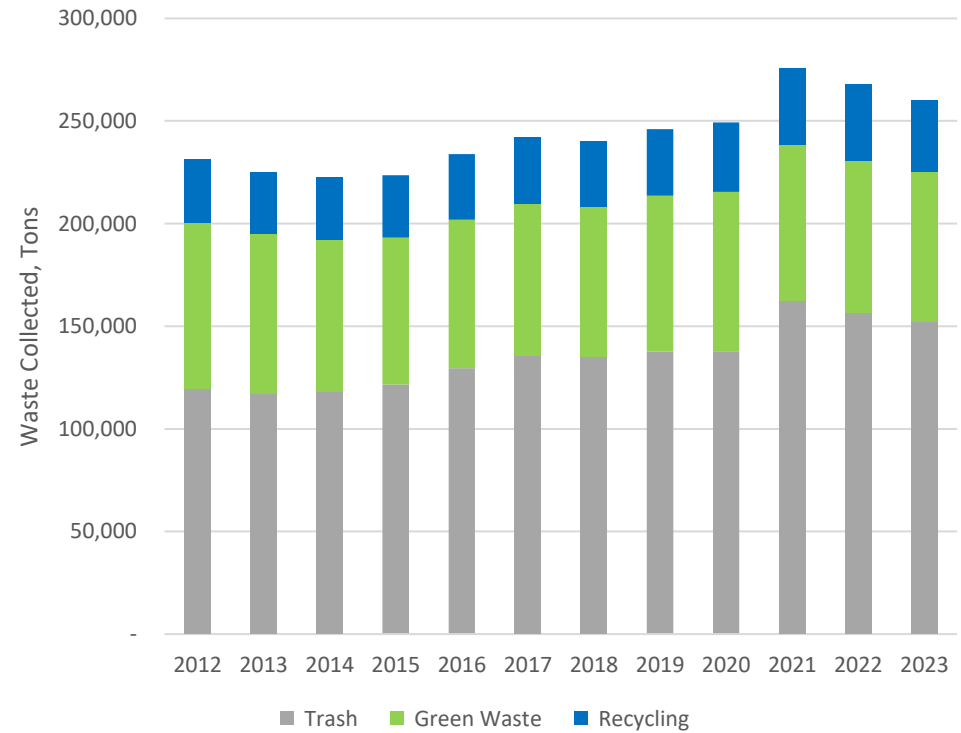
***The current solid waste rates were last updated in 2009***



## Solid Waste Management Division

# Waste Volume Collected

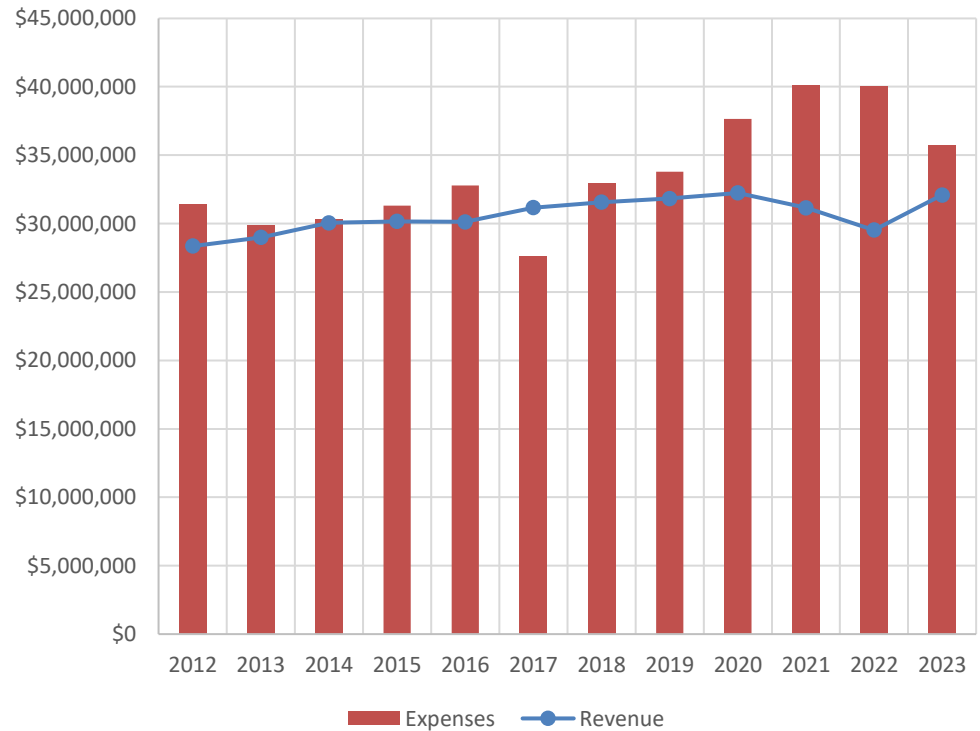
- Waste Volume
  - 231,340 tons in FY2012
  - 260,263 tons in FY2023





# Cost Reality: Continued Cost Increases

- Landfill Tipping Fees
  - FY2012: \$6,511,682
  - FY2023: \$7,367,703
- Fuel
  - FY2012: \$926,896
  - FY2023: \$1,586,400
- Labor
  - FY2012: \$11,557,642
  - FY2023: \$14,150,900







## Cost Reality: Continued Cost Increases

- Vehicles
  - 2012: Collection Truck \$261,500; Pickup Truck \$32,305
  - 2023: Collection Truck \$595,700; Pickup Truck \$51,100
- Fleet Maintenance
  - FY2012: \$4,289,413
  - FY2023: \$7,075,308
- Collection Cart Purchases
  - FY2012: \$741,360
  - FY2023: \$954,850



# Cost Reality: Need to Catch Up Vehicle Replacements

- 1.3 million miles per year across entire 176 vehicle fleet
- 109 collection trucks operate in severe duty environment
- 25% of fleet is beyond expected 8-year service life
- Deferred needed replacements in 2023





# Cost Reality: Fresno Sanitary Landfill Regulatory Action

- Under USEPA enforcement action
- City required to collect and treat landfill gas and groundwater
- \$2.5M included in FY24 budget for regrading and treatment improvements





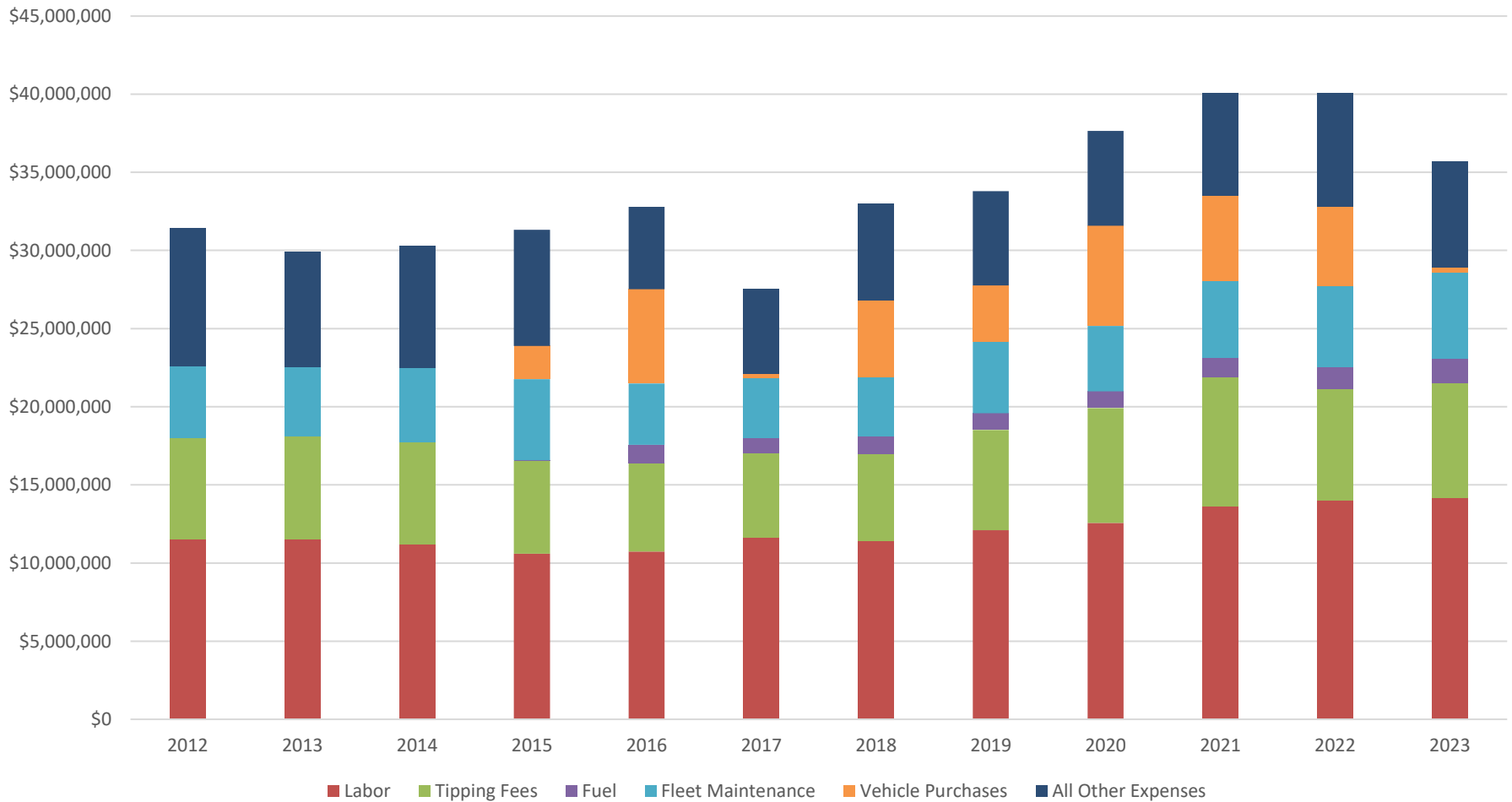
## Cost Reality: SB1383's Additional Cost Pressure

- SB1383 is California's Short-Lived Climate Pollutant reduction regulation
- Requires reducing landfilling of green waste and organics
- Public education, collection, and composting will require more effort



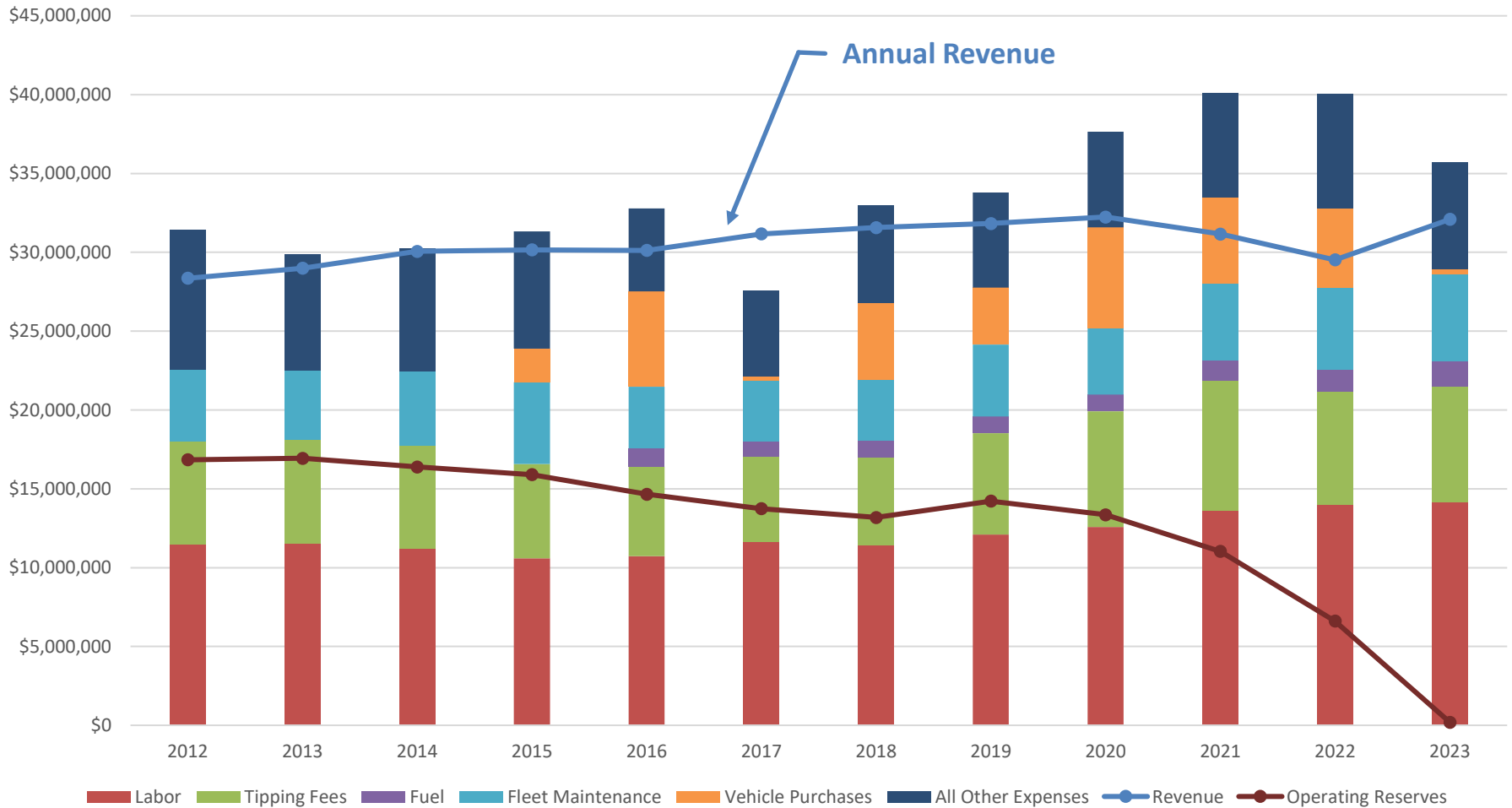


# Annual Operating Costs





# Overall Financial Situation





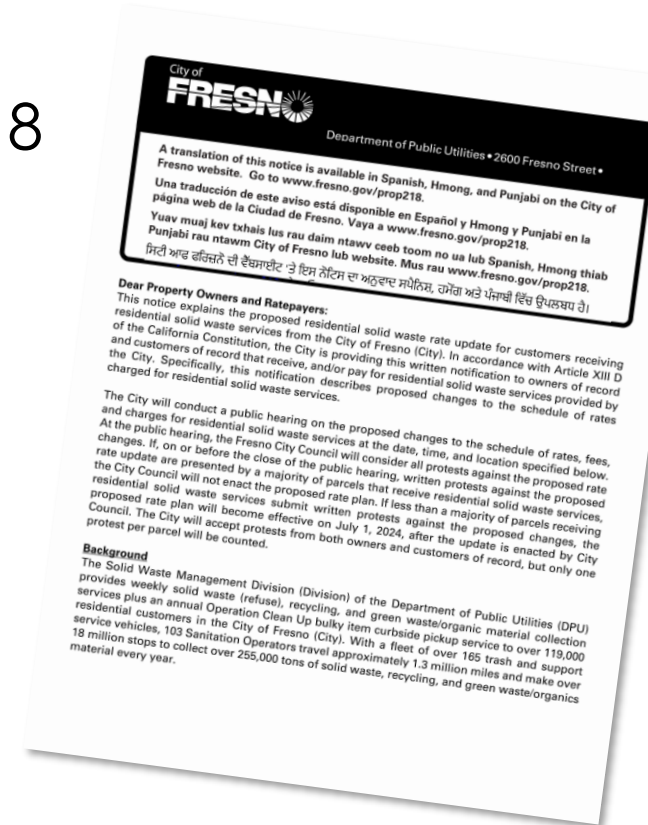
# Without a Rate Update

There are two options:

- SWMD will have to borrow from the City's general fund, impacting other city services, or
- Additional cost cutting measures will need to be taken which will impact SWMD's services to residential customers

# What's Next: The Prop 218 Rate-Setting Process

- Complete the Rate Study Report
- Council Approval to Initiate Prop 218
- Property Owner and Renter Notice
- Public Hearing After 45 Days
  - Final Count of Protests
  - City Council Discussion
  - City Council Approval
  - Adopt and Implement Updated Rates





# Tentative Schedule

**Nov 28 through Dec 6, 2023:** Four Community Outreach Meetings

**Dec 14, 2023:** City Council Considers Initiating Prop 218 Process

**March 18, 2024:** Service Accounts Receive Prop 218 Notices

**May 2, 2024:** Public Hearing and Final Protest Deadline

**July 1, 2024:** New Rates Go Into Effect

# Questions?



**PROVIDING LIFE'S  
ESSENTIAL SERVICES**



[www.fresno.gov/prop218](http://www.fresno.gov/prop218)

[Prop.218@fresno.gov](mailto:Prop.218@fresno.gov)

or call 621-8218