

## Trash Enclosure Information

### **11A Privately Funded Multi Family:**

*Trash enclosures are common use facilities and shall be located on an accessible route. Section 1127A.1 indicates that common use facilities "are not limited to" those listed in the code. Fair Housing Accessibility FIRST also provides the following commentary regarding trash enclosures:*

#### **Are garbage dumpsters required to be accessible under the design and construction requirements?**

*The garbage dumpster itself is not covered by the design and construction requirements. However, a sufficient number of garbage dumpsters must be located on an accessible route. If an enclosure is built around the dumpster, the opening must have a 32 inch clear width and an accessible route must be provided to the dumpster door. If parking is provided at the dumpster, accessible parking must also be provided.*

### **11B-Commercial/Public Funded Multi Family:**

*Generally, when a trash enclosure is provided on a site, a disabled tenant or employee may need to access it. Trash enclosures are typically considered employee work areas (spaces used only by employees and only for work). Employee work areas are required to comply with CBC Chapter 11B. ([11B-248.2](#))*

*At least one accessible route shall connect all accessible buildings, facilities, elements, and spaces that are on the same site. ([11B-206.2.2](#)) Therefore, a trash enclosure must be connected to the rest of the site by an accessible route.*

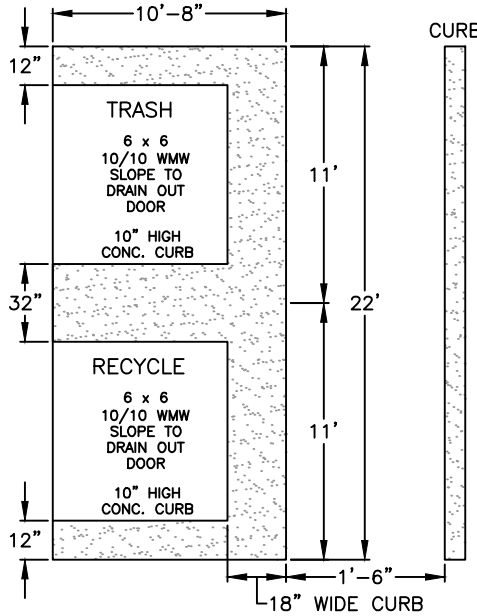
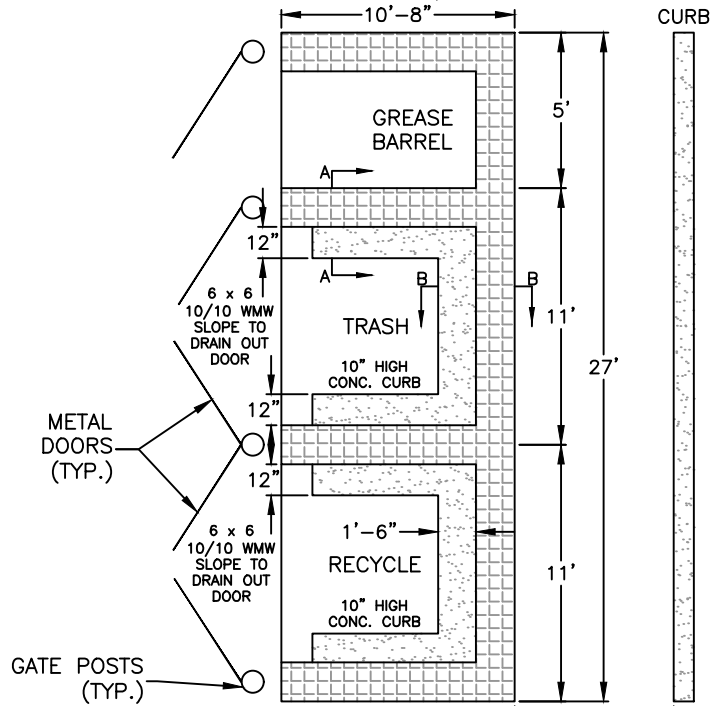
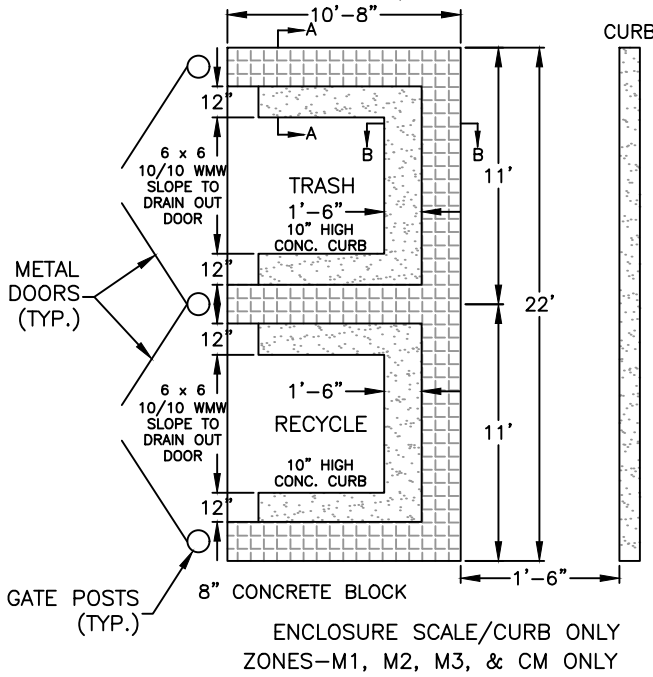
**11B-206.2.2:** *At least one accessible route shall connect accessible buildings, accessible facilities, accessible elements, and accessible spaces that are on the same site.*

*Exception: An accessible route shall not be required between accessible buildings, accessible facilities, accessible elements, and accessible spaces if the only means of access between them is a vehicular way not providing pedestrian access.*

**11B-203.9:** Employee workstations shall be on an accessible route complying with Division 4. Spaces and elements within employee workstations shall only be required to comply with Sections 11B-207.1, 11B-215.3, 11B-302, 11B-303, 11B-308.1.1, 11B-308.1.2, and 11B-404.2.3 unless exempted by other parts of this code. Common use circulation paths within employee workstations shall comply with Section 11B-206.2.8. (CBC 11B-203.9)

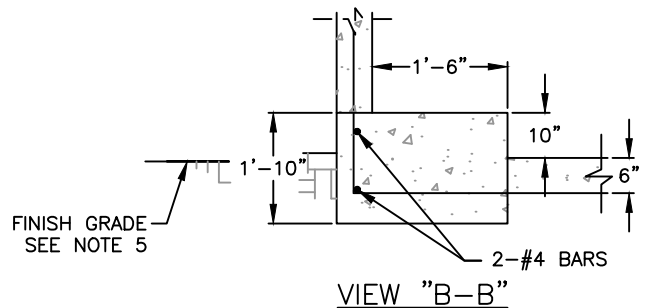
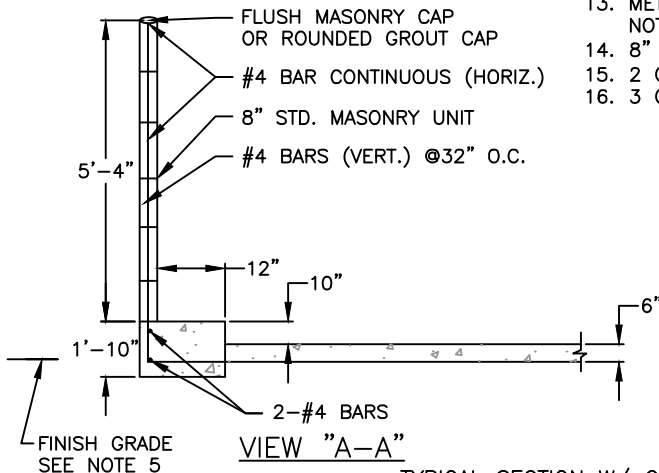
ENCLOSURE SCALE / STANDARD

ENCLOSURE SCALE / RESTAURANT



NOTES:

1. ALL CONSTRUCTION SHALL COMPLY WITH THE FRESNO MUNICIPAL CODE.
2. GROUT ALL CELLS.
3. ALL MASONRY UNITS SHALL COMPLY WITH THE LATEST ADOPTED CALIFORNIA BUILDING CODE AND U.B.C. STANDARD 24-4 GRADE N.
4. ALL MASONRY WALLS SHALL BE INSPECTED BY THE CITY OF FRESNO DEVELOPMENT DEPARTMENT.
5. DEPTH OF FOOTINGS ARE INTO NATURAL UNDISTURBED SOIL OR TESTED AND APPROVED COMPACTED FILL.
6. ALL MASONRY UNITS SHALL BE MINIMUM F'M=1500 PSI.
7. REINFORCING STEEL SHALL BE DEFORMED BAR, MIN. GRADE 40.
8. FOOTING CONCRETE SHALL BE A MINIMUM 2000 PSI AT 28 DAYS.
9. MORTAR SHALL BE TYPE-S (MINIMUM 1800 PSI AT 28 DAYS).  
 -ONE (1) PART CEMENT, TYPE-1  
 -ONE-HALF (1/2) PART LIME PUTTY OR HYDRATED LIME.  
 -FOUR AND ONE-HALF (4 1/2) PARTS SAND (MAXIMUM).
10. GROUT SHALL BE A MINIMUM 2000 PSI AT 28 DAYS.  
 -ONE (1) PART CEMENT.  
 -THREE (3) PARTS SAND.  
 -TWO (2) PARTS PEA GRAVEL.
11. FINISH PAD ELEVATION TO BE FLUSH WITH GRADE AT ACCESS PAVEMENT.
12. ANY GATE HINGES SHOULD BE LOCATED ON THE OUTSIDE.
13. METAL DOORS ARE REQUIRED ON ALL ENCLOSURES, CHAIN LINK IS NOT ACCEPTABLE.
14. 8" CONCRETE BLOCK TO BE USED FOR WALLS.
15. 2 CELLS ARE REQUIRED FOR COMMERCIAL/INDUSTRIAL BUILDINGS.
16. 3 CELLS ARE REQUIRED FOR RESTAURANTS.



TYPICAL SECTION W/ CONCRETE BLOCK WALL

TYPICAL REFUSE CONTAINER ENCLOSURE DETAILS

REF. & REV.  
 AUG. 2010  
 MAR. 2021 (A.7)

CITY OF FRESNO  
 P-33A

EXHIBIT "B"  
MODIFIED TRASH/RECYCLING ENCLOSURE

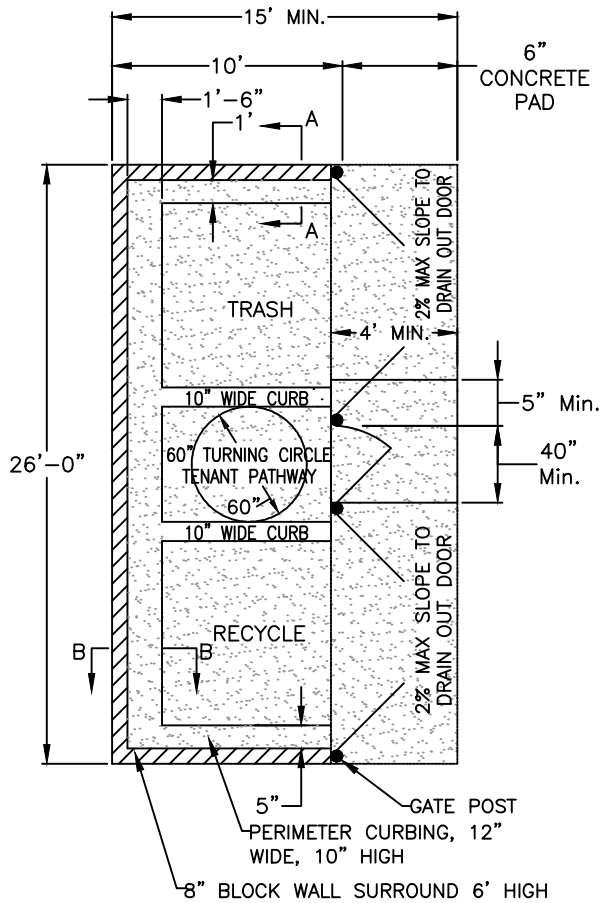
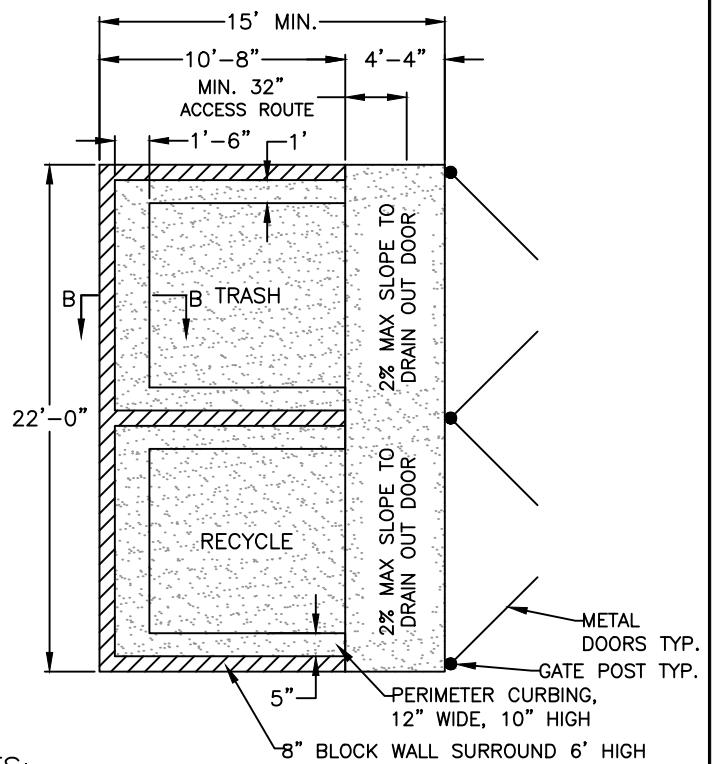
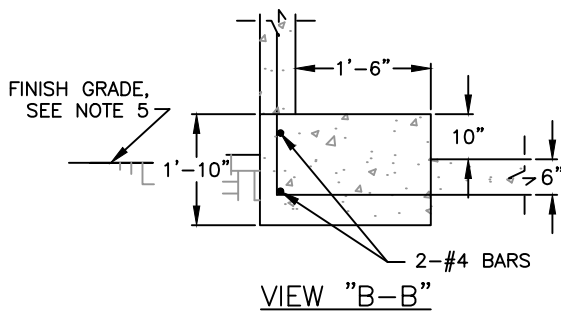


EXHIBIT "A"  
MODIFIED TRASH/RECYCLING ENCLOSURE

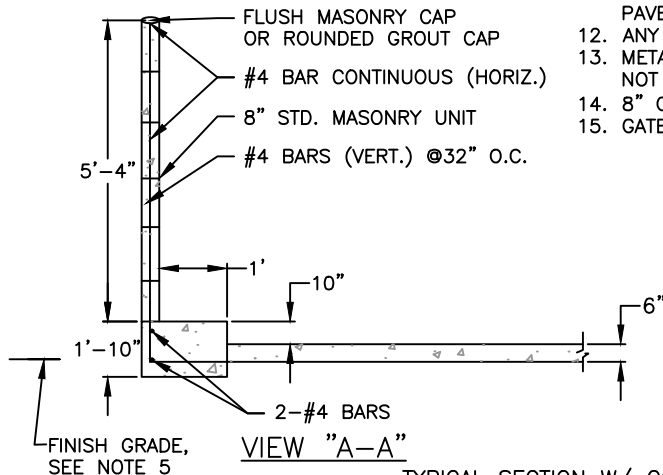


NOTES:

1. ALL CONSTRUCTION SHALL COMPLY WITH THE FRESNO MUNICIPAL CODE.
2. GROUT ALL CELLS.
3. ALL MASONRY UNITS SHALL COMPLY WITH THE LATEST ADOPTED CALIFORNIA BUILDING CODE AND U.B.C. STANDARD 24-4 GRADE N.
4. ALL MASONRY WALLS SHALL BE INSPECTED BY THE CITY OF FRESNO DEVELOPMENT DEPARTMENT.
5. DEPTH OF FOOTINGS ARE INTO NATURAL UNDISTURBED SOIL OR TESTED AND APPROVED COMPACTED FILL.
6. ALL MASONRY UNITS SHALL BE MINIMUM F'M=1500 PSI.
7. REINFORCING STEEL SHALL BE DEFORMED BAR, MIN. GRADE 40.
8. FOOTING CONCRETE SHALL BE A MINIMUM 2000 PSI AT 28 DAYS.
9. MORTAR SHALL BE TYPE-S (MINIMUM 1800 PSI AT 28 DAYS).  
ONE (1) PART CEMENT, TYPE-1  
ONE-HALF (1/2) PART LIME PUTTY OR HYDRATED LIME.  
FOUR AND ONE-HALF (4 1/2) PARTS SAND (MAXIMUM).
10. GROUT SHALL BE A MINIMUM 2000 PSI AT 28 DAYS.  
ONE (1) PART CEMENT.  
THREE (3) PARTS SAND.  
TWO (2) PARTS PEA GRAVEL.
11. FINISH PAD ELEVATION TO BE FLUSH WITH GRADE AT ACCESS PAVEMENT.
12. ANY GATE HINGES SHOULD BE LOCATED ON THE OUTSIDE.
13. METAL DOORS ARE REQUIRED ON ALL ENCLOSURES, CHAIN LINK IS NOT ACCEPTABLE.
14. 8" CONCRETE BLOCK TO BE USED FOR WALLS.
15. GATE HARDWARE SHALL COMPLY WITH 11-13 404.2.7 OF CBC 2016

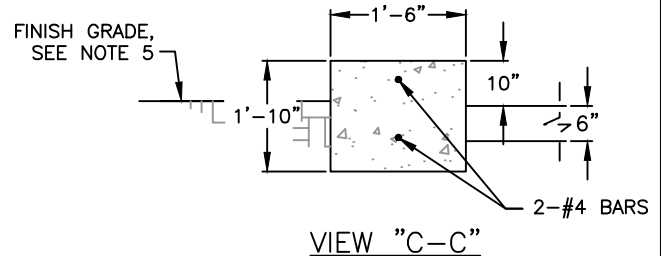


VIEW "B-B"



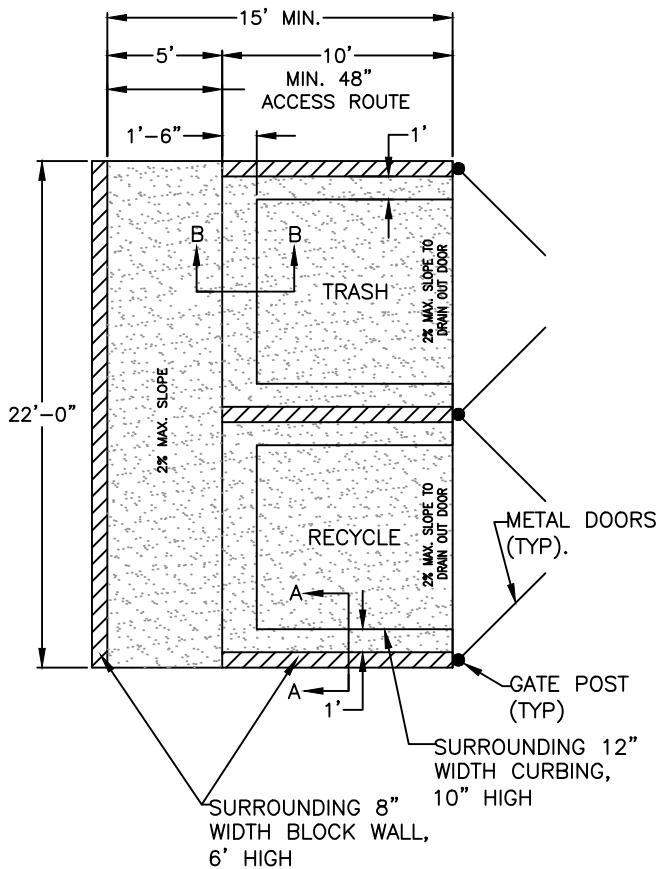
VIEW "A-A"

TYPICAL SECTION W/ CONCRETE BLOCK WALL



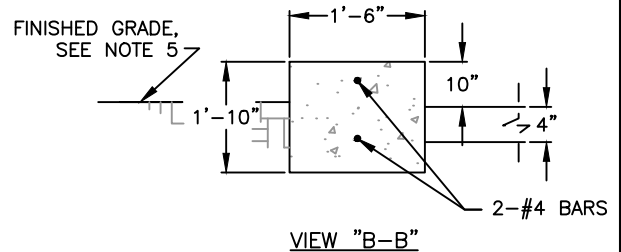
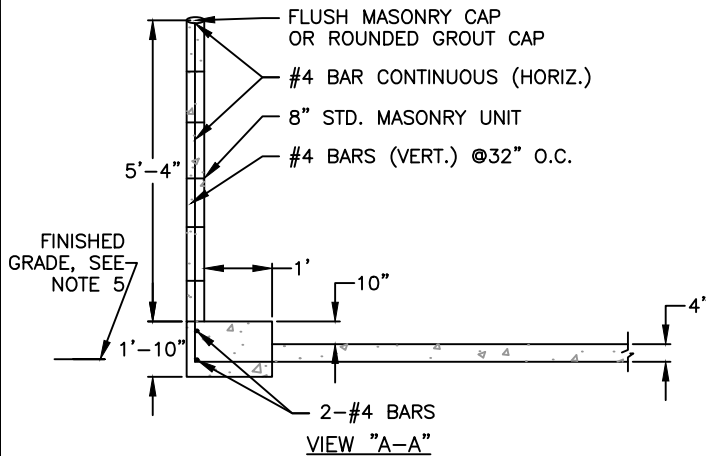
VIEW "C-C"

EXHIBIT "C"  
MULTI-FAMILY TRASH/RECYCLING ENCLOSURE



NOTES:

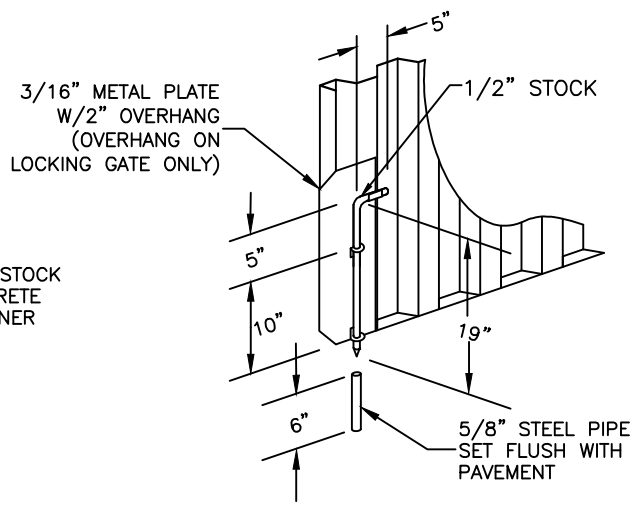
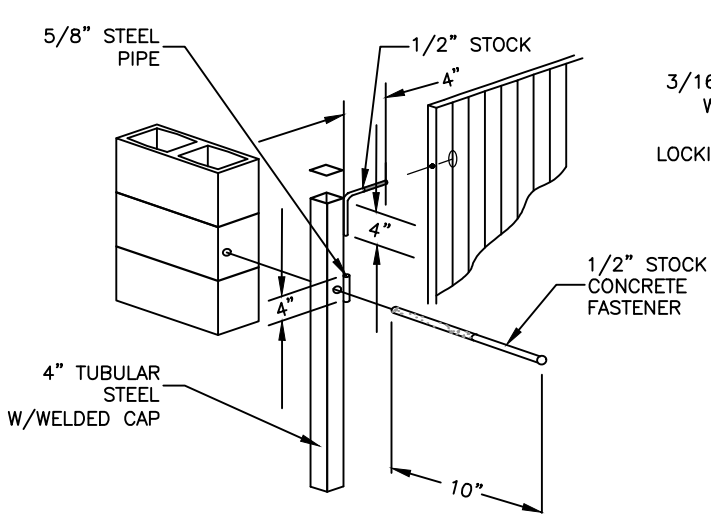
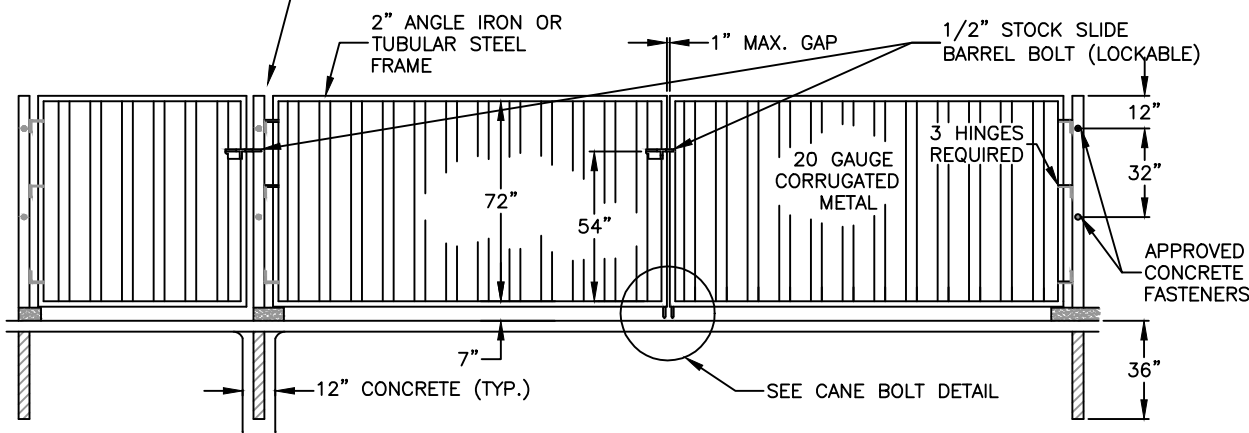
1. ALL CONSTRUCTION SHALL COMPLY WITH THE FRESNO MUNICIPAL CODE.
2. GROUT ALL CELLS.
3. ALL MASONRY UNITS SHALL COMPLY WITH THE LATEST ADOPTED CALIFORNIA BUILDING CODE AND U.B.C. STANDARD 24-4 GRADE N.
4. ALL MASONRY WALLS SHALL BE INSPECTED BY THE CITY OF FRESNO DEVELOPMENT DEPARTMENT.
5. DEPTH OF FOOTINGS ARE INTO NATURAL UNDISTURBED SOIL OR TESTED AND APPROVED COMPACTED FILL.
6. ALL MASONRY UNITS SHALL BE MINIMUM F'M=1500 PSI.
7. REINFORCING STEEL SHALL BE DEFORMED BAR, MIN. GRADE 40.
8. FOOTING CONCRETE SHALL BE A MINIMUM 2000 PSI AT 28 DAYS.
9. MORTAR SHALL BE TYPE-S (MINIMUM 1800 PSI AT 28 DAYS).  
ONE (1) PART CEMENT, TYPE-1  
ONE-HALF (1/2) PART LIME PUTTY OR HYDRATED LIME.  
FOUR AND ONE-HALF (4 1/2) PARTS SAND (MAXIMUM).
10. GROUT SHALL BE A MINIMUM 2000 PSI AT 28 DAYS.  
ONE (1) PART CEMENT.  
THREE (3) PARTS SAND.  
TWO (2) PARTS PEA GRAVEL.
11. FINISH PAD ELEVATION TO BE FLUSH WITH GRADE AT ACCESS PAVEMENT.
12. ANY GATE HINGES SHOULD BE LOCATED ON THE OUTSIDE.
13. METAL DOORS ARE REQUIRED ON ALL ENCLOSURES, CHAIN LINK IS NOT ACCEPTABLE.
14. 8" CONCRETE BLOCK TO BE USED FOR WALLS.
15. GATE HARDWARE SHALL COMPLY WITH 11-13 404.2.7 OF CBC 2016



TYPICAL SECTION W/ CONCRETE BLOCK WALL

GENERAL NOTES:

1. ALL SITE PLANS SHALL HAVE THE SIGNATURE APPROVAL OF A SOLID WASTE MANAGEMENT DIVISION REPRESENTATIVE.
2. CONTAINERS USED AT ALL PLACES SHALL BE PLACED FOR COLLECTION AT SERVICE LOCATIONS APPROVED BY THE PUBLIC UTILITIES DIRECTOR, OR HIS/HER DESIGNEE, BUT SHALL NOT BE STORED IN THE PUBLIC RIGHT-OF-WAY.
3. THE DESIGN OF ANY NEW, SUBSTANTIALLY REMODELED, OR EXPANDED BUILDING OR OTHER FACILITY SHALL PROVIDE FOR PROPER STORAGE OR HANDLING WHICH WILL ACCOMMODATE THE SOLID WASTE LOADING ANTICIPATED AND WHICH WILL ALLOW FOR SAFE AND EFFICIENT WASTE REMOVAL.
4. THE PUBLIC UTILITIES DIRECTOR, OR HIS/HER DESIGNEE, SHALL PLAN WITH THE PROPERTY OWNER AND/OR THEIR REPRESENTATIVE AS TO PLACEMENT OF STORAGE CONTAINERS TO MINIMIZE TRAFFIC, AESTHETIC AND OTHER PROBLEMS BOTH ON THE PROPERTY, AND FOR THE GENERAL PUBLIC.
5. BELOW IS A CHECKLIST OF REQUIREMENTS REVIEWED FOR A SITE PLAN:
  - a. REFUSE, RECYCLABLES, AND GREASE BARRELS SHALL BE STORED FOR LATER REMOVAL FROM THE PREMISES IN AN AREA THAT IS SCREENED FROM VIEW OF THE PUBLIC STREETS BY A CITY OF FRESNO, PUBLIC UTILITIES APPROVED STANDARD ENCLOSURE (REFER TO P-33, P-34, AND P-95 FOR DETAILS). APPROVED STANDARD ENCLOSURES ARE TO BE BUILT USING EIGHT INCH (8") CONCRETE BLOCK AT A HEIGHT OF SIX FEET (6').
  - b. ENCLOSURES BUILT IN (INDUSTRIAL ZONES) M-1, M-2, M-3, AND CM ZONES REQUIRING DIRECTOR APPROVAL, OR HIS/HER DESIGNEE, MAY ELIMINATE WALLS AS LONG AS IT IS NOT VISIBLE FROM A MAIN STREET. FOR THIS DESIGN, THE CURBING WILL BE TWELVE INCHES (12") WIDE ON BOTH SIDES, EIGHTEEN INCHES (18") DEEP ALONG THE REAR WITH A THIRTY-TWO INCH (32") WIDE CURB SEPARATING THE TWO CELLS. CURBING MUST BE REINFORCED WITH REBAR AT A HEIGHT OF TEN INCHES (10"). ALL ENCLOSURES SHALL BE A MINIMUM OF EIGHTEEN INCHES (18") FROM THE NEAREST CURB. ALL OTHER PUBLIC WORKS DESIGN REQUIREMENTS SHALL BE MET DURING REVIEW.
  - c. THE APPROVED STANDARD ENCLOSURE HAS BEEN DESIGNED TO ACCOMMODATE ALL SIZES OF CONTAINERS TO HANDLE THE ACCUMULATION OF WASTE AND RECYCLABLES GENERATE BETWEEN COLLECTIONS. A STORAGE AREA WITH INNER DIMENSIONS TEN FEET (10') BY TEN FEET (10') IS THE MINIMUM. THERE SHALL BE CURBING TWELVE INCHES (12") FROM SIDE WALLS AND EIGHTEEN INCHES (18") FROM REAR WALL AND AT A HEIGHT OF TEN INCHES (10"). THESE FEATURES ARE INCLUDED IN ORDER TO REDUCE THE POSSIBILITY OF DAMAGE TO THE ENCLOSURE ITSELF.
  - d. SERVICE ACCESS TO ENCLOSURE SHALL BE A MINIMUM UNENCUMBERED OPENING OF EIGHT FEET (8'). THE GATE TO BE USED SHALL BE BUILT OF METAL, CHAIN LINK IS NOT ACCEPTABLE, SO THAT BINS CANNOT BE SEEN WHEN GATES ARE CLOSED AND SHALL BE MOUNTED ON THE OUTER SURFACE OF ENCLOSURE AS TO NOT PROTRUDE INTO SERVICE ACCESS OPENING. HARDWARE LATCHES SHOULD BE A HEAVY GAUGE LOCKING GATE LATCH. TWO GATES ARE REQUIRED ON EACH CELL WITH THE EXCEPTION OF THE GREASE BARREL CELL.
  - e. THE FLOOR OR BOTTOM SURFACE OF THE COLLECTION AREA SHALL BE MADE OF CONCRETE, (SLOPED) ONE PERCENT (1%) TO THE FRONT, AND THERE SHALL NOT BE ANY DRAINAGE GUTTER IN FRONT OF ENTRANCE. THE UNENCUMBERED OPENING OF EIGHT FEET (8') REFERENCED IN D. ABOVE SHALL BE A LEVEL SURFACE. THE FLOOR SHALL NOT SLOPE TO THE BACK OR SIDES OF THE ENCLOSURE TO ALLOW DRAINAGE TO THE REAR OF THE AREA OR CAUSE ANY STANDING WATER WITHIN THE ENCLOSURE. IT SHALL BE CONSTRUCTED SO THE COLLECTION VEHICLE CAN DRIVE DIRECTLY INTO THE POCKETS OF THE CONTAINERS WITHOUT ANY OBSTRUCTIONS.
  - f. INGRESS AND EGRESS SHALL HAVE AN UNOBSTRUCTED OVERHEAD CLEARANCE OF SIXTEEN FEET (16') AND SHALL NOT BE LESS THAN EIGHTEEN FEET (18') WIDE AND CAPABLE OF ACCOMMODATING A TRUCK WITH A TWO HUNDRED FIFTY INCH (250") WHEELBASE, A FORTY-FOUR FOOT (44') (CENTER LINE) TURNING RADIUS AND A SUPPORT WEIGHT OF THIRTY-FIVE (35) TONS. AREA SHALL BE UNOBSTRUCTED AND SO CONFIGURED THAT A TRUCK WILL BE ABLE TO MAKE A ROUND TRIP FROM THE PUBLIC RIGHT-OF-WAY TO THE COLLECTION AREA AND RETURN WITHOUT EXCESSIVE BACKING INTO A TRAFFIC LANE OR A PUBLIC THOROUGHFARE. BACKING AROUND A BUILDING IS NOT ALLOWED. AT NO TIME SHALL A TRUCK BE REQUIRED TO BACK IN EXCESS OF FORTY-FIVE FEET (45').
  - g. BIN ENCLOSURE GATES AND SERVICE AREA SHALL NOT OPEN INTO OR BE A PART OF A PARKING STALL OR LOADING ZONE.
  - h. GATED ENTRANCE/EXIT SERVICE SITES SHALL BE AT LEAST FORTY FEET (40') AWAY FROM ENTRANCES AND EXITS TO PREVENT TRUCKS FROM STICKING OUT INTO THE ROADWAY WHILE WAITING TO ACCESS ENCLOSURE AND ALLOW TRUCKS ENOUGH SPACE TO CLEAR GATE ON EXITING WHILE WAITING TO MERGE WITH TRAFFIC.
  - i. THE ENCLOSURE(S) SHALL ACCOMMODATE REFUSE BINS, RECYCLE BINS, AND GREASE BARRELS WHEN APPLICABLE. NEITHER THE WASTE NOR RECYCLING CONTAINER SHALL BE REQUIRED TO BE MOVED IN ORDER TO SERVICE THE OTHER. GREASE BARRELS SHALL NOT BE PLACED IN THE SAME AREA OF THE ENCLOSURE WITH REFUSE OR RECYCLABLES.
  - j. OWNER/OCCUPANTS SHALL NOT USE ENCLOSURES FOR STORAGE OR PLACE ANY MATERIALS AROUND THE TRASH, RECYCLE, OR GREASE CONTAINERS.
  - k. SIGNAGE IS REQUIRED TO CLEARLY IDENTIFY ALL RECYCLING, SOLID WASTE COLLECTION, AND LOADING AREAS AND THE MATERIALS ACCEPTED THEREIN. THIS SIGNAGE SHALL BE PLACED AT ALL POINTS OF DIRECT ACCESS TO RECYCLING, SOLID WASTE, AND LOADING AREAS ON, OR ADJACENT TO, THE RECYCLABLE AND SOLID WASTE MATERIAL CONTAINERS.
  - l. SITES UTILIZING COMPACTORS AND/OR ROLL-OFFS REQUIRE SIXTY FEET (60') OF CLEARANCE IN FRONT OF THE UNIT, AND A MINIMUM OF THREE FEET (3') ON EACH SIDE, FOR LOADING AND UNLOADING.



**NOTES:**

1. GATES TO BE PAINTED TO MATCH BUILDING ACCENT FEATURES.
2. DESIGN, ENGINEERING AND CONSTRUCTION NOT SPECIFICALLY NOTED SHALL BE IN ACCORDANCE WITH ACCEPTED INDUSTRY STANDARDS AND OF FIRST QUALITY.
3. SECONDARY CANE BOLT RETAINER TO BE PLACED FOR EACH GATE SUCH THAT GATE IS HELD IN A POSITION 90° TO THE CLOSED POSITION.
4. TWO GATES ARE REQUIRED ON EACH CELL WITH THE EXCEPTION OF THE GREASE BARREL CELL.