

City of Fresno

Introduction to Redistricting



July 15, 2021

Dr. Jeff Tilton, Senior Consultant
National Demographics Corporation

Redistricting Process, Part I

Step	Description
Initial Hearings Summer/Fall 2021	<ul style="list-style-type: none">• Held prior to release of draft maps• Education and to solicit input on the communities in the Districts• Thursday, July 15, 6 p.m.• Thursday, July 29, 11 a.m.• Thursday, August 19, 6 p.m.• Saturday, October 16, 10 a.m.• Saturday, October 16, 2 p.m.• Saturday, October 16, 6 p.m.
Census Data Release Mid/Late August	<ul style="list-style-type: none">• Census Bureau releases official 2020 Census population data.
California Data Release Early October 2021	<ul style="list-style-type: none">• California Statewide Database releases California's official 'prisoner-adjusted' 2020 redistricting data.

Redistricting Process, Part II

Step	Description
Draft Map Hearing November 4, 2021 <i>6 p.m.</i>	<ul style="list-style-type: none">• Discuss and revise the draft maps• Discuss the election sequence• Deadline to submit draft maps: October 21, 2021, 5 p.m.• Post draft maps by October 28, 2021, 5 p.m.
Draft Map Hearing December 2, 2021 <i>6 p.m.</i>	<ul style="list-style-type: none">• Discuss and select final map• Discuss and determine election sequence• First reading of ordinance• Deadline to submit draft maps: November 19, 2021, 5 p.m.• Post draft maps by November 24, 2021, 5 p.m.
Map Adoption December 9, 2021 <i>6 p.m.</i>	<ul style="list-style-type: none">• Map adopted via second reading of ordinance• Post draft map: December 2, 2021

Redistricting Rules and Goals

1. Federal Laws

Equal Population
Federal Voting Rights Act
No Racial Gerrymandering



2. California Criteria for Cities

Geographically contiguous
Undivided neighborhoods and “communities of interest”
(Socio-economic geographic areas that should be kept together)
Easily identifiable boundaries
Compact
(Do not bypass one group of people to get to a more distant group of people)

Prohibited:

“Shall not favor or discriminate against a political party.”

3. Other Traditional Redistricting Principles

Minimize voters shifted to different election years
Respect voters’ choices / continuity in office
Future population growth
Preserving the core of existing districts

Defining Neighborhoods

1st Question: What is your neighborhood?

2nd Question: What are its geographic boundaries?

Examples of physical features defining a neighborhood boundary:

- Natural neighborhood dividing lines, such as highway or major roads, rivers, canals and/or hills
- Areas around parks or schools
- Other neighborhood landmarks

In the absence of public testimony, planning records and other similar documents may provide definition.



Beyond Neighborhoods: Defining Communities of Interest

1st Question: What defines your community?

- Geographic Area, plus
- Shared issue or characteristic
 - Shared social or economic interest
 - Impacted by city policies
- Tell us “your community’s story”

2nd Question: Would this community benefit from being “included within a single district for purposes of its effective and fair representation”?

- Or would it benefit more from having multiple representatives?

Definitions of Communities of Interest may not include relationships with political parties, incumbents, or political candidates.

Beyond Neighborhoods: Communities

Under the California Elections Code, “community of interest” has a very specific definition in the context of districting and redistricting cities and counties:

A “community of interest” is a population that shares common social or economic interests that should be included within a single district for purposes of its effective and fair representation.

Communities of interest do not include relationships with political parties, incumbents, or political candidates.

(emphasis added)

Possible Neighborhoods / Communities

Public Mapping and Map Review Tools

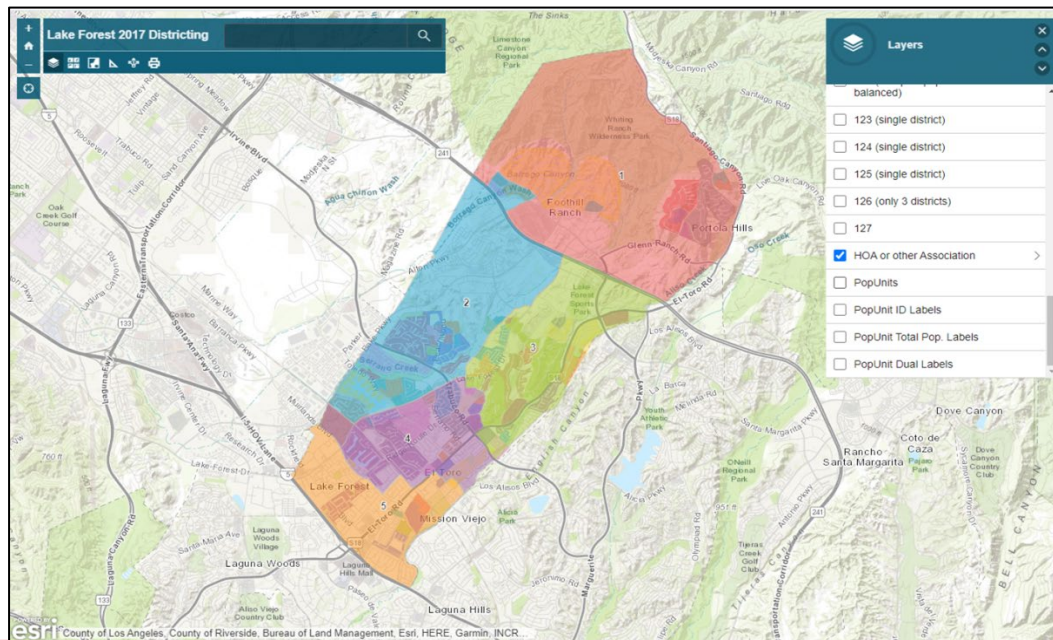
- **Different tools for different purposes**
- **Different tools for different levels of technical skill and interest**
 - Simple “review draft maps” tool
 - Easy-to-use “Draw your neighborhood” tool
 - Paper- and Excel-based simple “Draw a draft map” tools
 - Powerful, data-rich “Draw a draft map” tool

Whether you use the powerful (but complicated) online mapping tool, Excel, the paper kit, or just draw on a napkin, we welcome your maps!

Simple Map Review Tool

Online Interactive Review Map

- ESRI's "ArcGIS Online" – similar to Google Maps in ease of use
- Used to review, analyze and compare maps, not to create them
- Includes overlays of "community of interest" and other data



Simple Map Drawing Tool

Paper “Public Participation Kit”

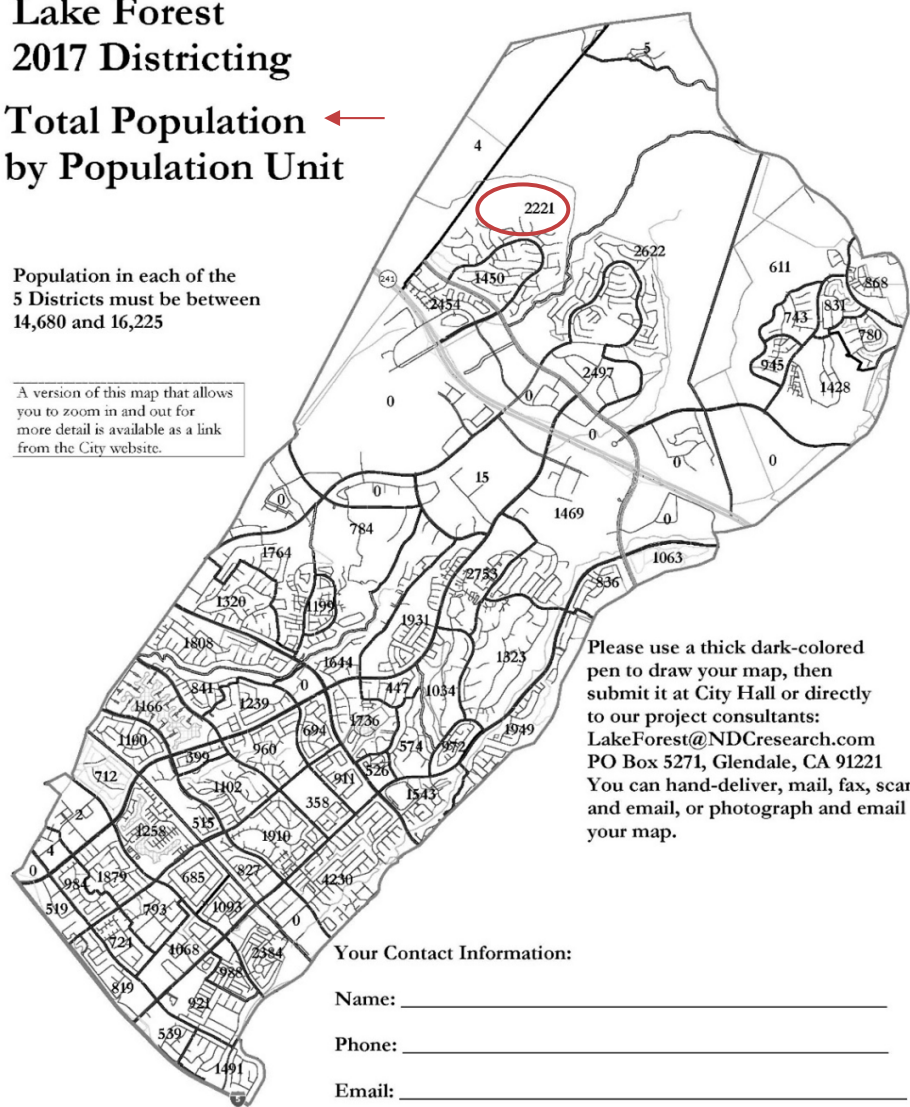
- For those without internet access or who prefer paper
- Total Population Counts only – no demographic numbers

Lake Forest 2017 Districting

Total Population ← by Population Unit

Population in each of the 5 Districts must be between 14,680 and 16,225

A version of this map that allows you to zoom in and out for more detail is available as a link from the City website.



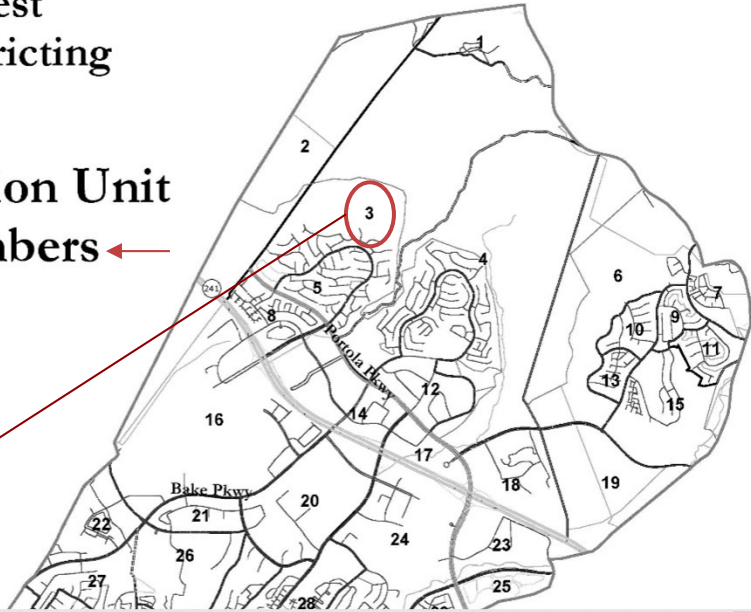
Simple Map Drawing Tool + Excel Supplement

“Public Participation Kit”

- For those who know Excel and do not wish to use online tools
- Adds CVAP data
- Excel does the math

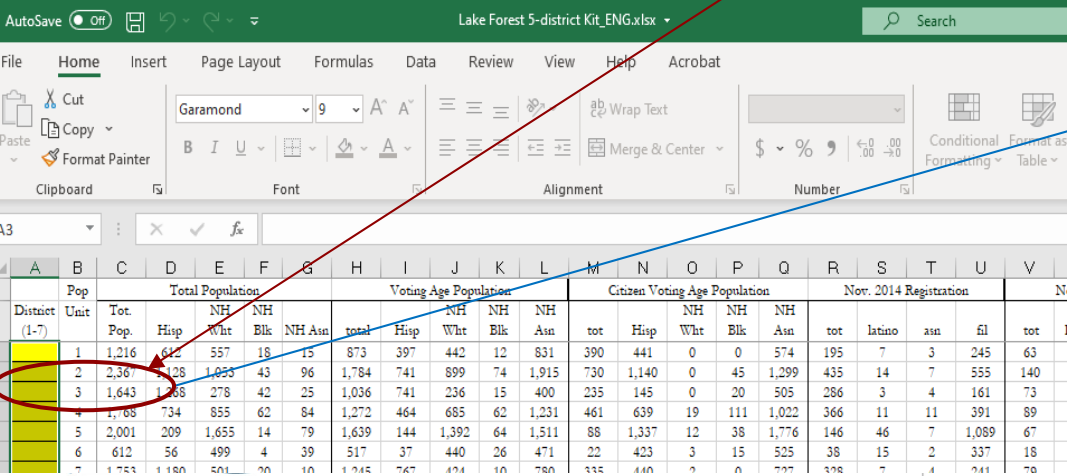
Lake Forest
2017 Districting

Population Unit
ID Numbers



		Counts							Percentages										
Group	Category	1	2	3	4	5	6	7	Unassigned	Total	1	2	3	4	5	6	7	Unassigned	Total
Sums by District Assigned		Ideal population: 15,314																	
City of San Buenaventura 2017 Public Participation Kit		enter your name here																	
Total Population																			
Total CVAP																			
Total Reg.																			
Total Votes																			

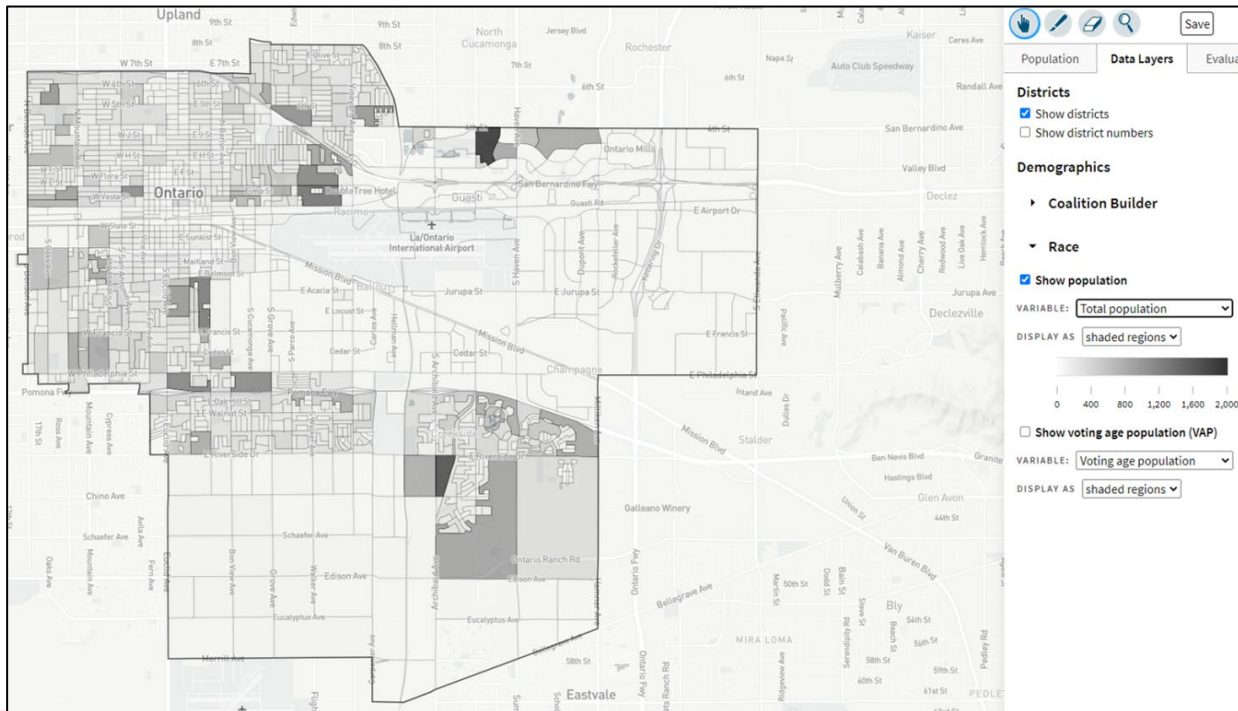
Distict	Unit	Tot. Pop.	Hisp	Whit	Blk	NH	Asn	total	Hisp	Whit	Blk	Asn	tot	Hisp	Whit	Blk	Asn	tot	latino	asn	fil	tot
1	1	1,216	642	557	18	15	873	397	442	12	831	390	441	0	574	195	7	3	245	63		
2	2	2,367	1,028	1,053	43	96	1,784	741	899	74	1,915	730	1,140	0	45	1,299	435	14	7	555	140	
3	3	1,643	768	278	42	25	1,036	741	236	15	400	235	145	0	20	505	286	3	4	161	73	
4	4	1,768	734	855	62	84	1,272	464	685	62	1,231	461	639	19	111	1,022	366	11	11	391	89	
5	5	2,001	209	1,655	14	79	1,639	144	1,392	64	1,511	88	1,337	12	38	1,776	146	46	7	1,069	67	
6	6	612	56	499	4	39	517	37	440	26	471	22	423	3	15	525	38	15	2	337	18	
7	7	1,753	1,180	501	70	16	1,745	767	474	16	780	335	440	0	0	777	378	7	4	241	70	



DistrictR

“Draw Your Community of Interest” focus

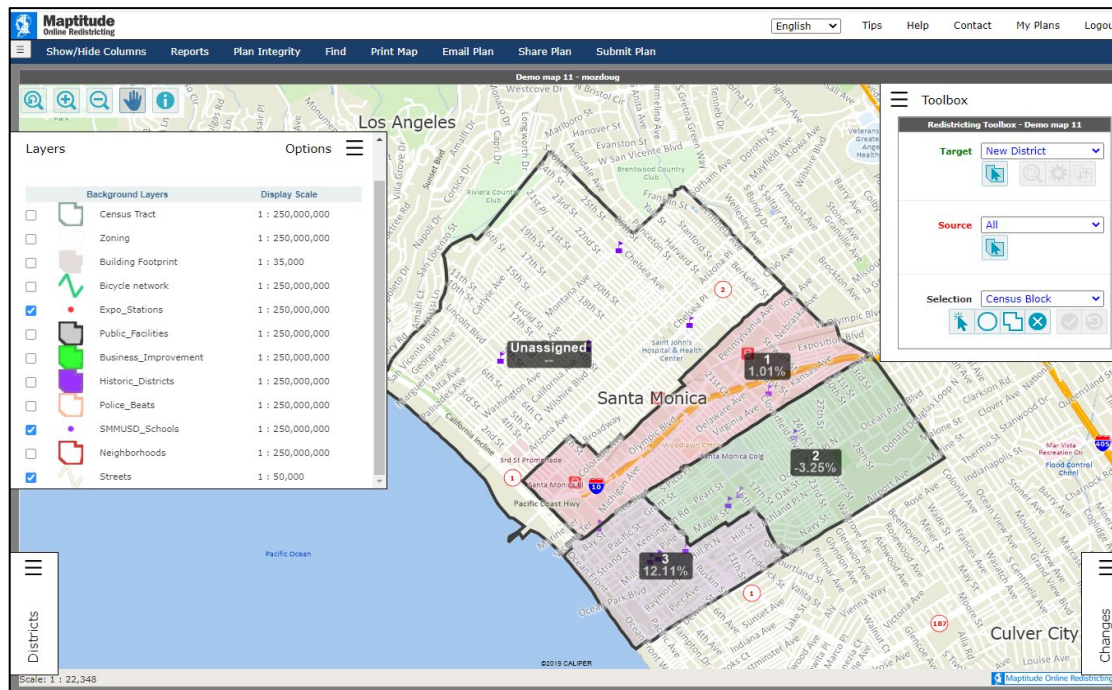
- Also includes simple district-mapping tool
- Only available in English
- Similar external options: [Representable.org](https://representable.org), [DrawMyCACommunity.org](https://drawmycacommunity.org)



Caliper's “Maptitude Online Redistricting”

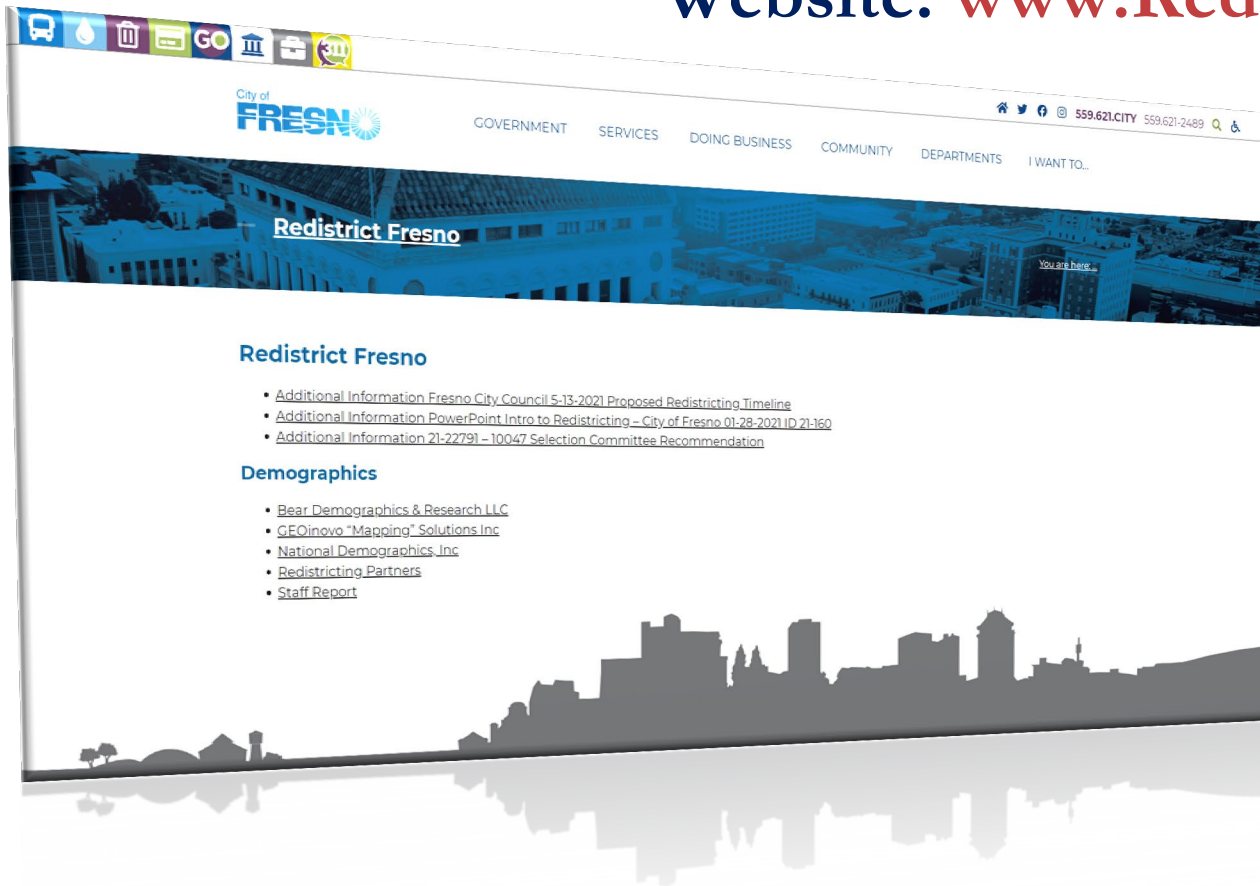
Full Database, Powerful Online Mapping Tool

- Powerful, common, data-rich online tool
- Six language options: English, Spanish, Portuguese, Vietnamese, Mandarin and Korean
- [Quick Start Guide](#)



Share Your Thoughts

Website: www.RedistrictFresno.com



Phone: **559.621.7837**

Email: RedistrictFresno@Fresno.gov

Public Hearing & Discussion

What is your neighborhood and what are its boundaries?

What other notable areas are in the City, and what are their boundaries?

Any questions about the mapping tools?

PUBLIC HEARING: October 16 meetings

Council Discussion, then Action:

Vote on areas that meet each AB 849 definition:

- “neighborhoods”
- “communities of interest . . . that should be included within a single district for purposes of its effective and fair representation.”