

City of



## Introduction to Redistricting



Dr. Jeff Tilton, Senior Consultant  
National Demographics Corporation

# Redistricting Process, Part I

Step	Description
<b>Initial Hearings</b> Summer/Fall 2021	<ul style="list-style-type: none"><li>• Held prior to release of draft maps</li><li>• Education and to solicit input on the communities in the Districts</li><li>• Thursday, July 15, 6 p.m.</li><li>• Thursday, July 29, 11 a.m.</li><li>• <b>Thursday, August 19, 6 p.m.</b></li><li>• Saturday, October 16, 10 a.m.</li><li>• Saturday, October 16, 2 p.m.</li><li>• Saturday, October 16, 6 p.m.</li></ul>
<b>Census Data Release</b> Mid/Late August	<ul style="list-style-type: none"><li>• Census Bureau releases official 2020 Census population data.</li></ul>
<b>California Data Release</b> Early October 2021	<ul style="list-style-type: none"><li>• California Statewide Database releases California's official 'prisoner-adjusted' 2020 redistricting data.</li></ul>



# Redistricting Process, Part II

Step	Description
<b>Draft Map Hearing</b> November 4, 2021 <i>6 p.m.</i>	<ul style="list-style-type: none"><li>• Discuss and revise the draft maps</li><li>• Discuss the election sequence</li><li>• Deadline to submit draft maps: October 21, 2021, 5 p.m.</li><li>• Post draft maps by October 28, 2021, 5 p.m.</li></ul>
<b>Draft Map Hearing</b> December 2, 2021 <i>6 p.m.</i>	<ul style="list-style-type: none"><li>• Discuss and select final map</li><li>• Discuss and determine election sequence</li><li>• First reading of ordinance</li><li>• Deadline to submit draft maps: November 19, 2021, 5 p.m.</li><li>• Post draft maps by November 24, 2021, 5 p.m.</li></ul>
<b>Map Adoption</b> December 9, 2021 <i>6 p.m.</i>	<ul style="list-style-type: none"><li>• Map adopted via second reading of ordinance</li><li>• Post draft map: December 2, 2021</li></ul>



# Redistricting Rules and Goals

## 1. Federal Laws

**Equal Population**

**Federal Voting Rights Act**

**No Racial Gerrymandering**

## 2. California Criteria for Cities

1. **Geographically contiguous**

2. **Undivided neighborhoods and “communities of interest”**

(Socio-economic geographic areas that should be kept together)

3. **Easily identifiable boundaries**

4. **Compact**

(Do not bypass one group of people to get to a more distant group of people)

**Prohibited:** “Shall not favor or discriminate against a political party.”

## 3. Other Traditional Redistricting Principles

**Minimize voters shifted to different election years**

**Respect voters’ choices / continuity in office**

**Future population growth**

**Preserving the core of existing districts**





# Defining Neighborhoods

---

**1<sup>st</sup> Question: What is your neighborhood?**

**2<sup>nd</sup> Question: What are its geographic boundaries?**

**Examples of physical features defining a neighborhood boundary:**

- Natural neighborhood dividing lines, such as highway or major roads, rivers, canals and/or hills
- Areas around parks or schools
- Other neighborhood landmarks

**In the absence of public testimony, planning records and other similar documents may provide definition.**



# Beyond Neighborhoods: Defining Communities of Interest

---

## 1<sup>st</sup> Question: What defines your community?

- Geographic Area, plus
- Shared issue or characteristic
  - Shared social or economic interest
  - Impacted by city policies
- Tell us “your community’s story”

## 2<sup>nd</sup> Question: Would this community benefit from being “included within a single district for purposes of its effective and fair representation”?

- Or would it benefit more from having multiple representatives?

**Definitions of Communities of Interest may not include relationships with political parties, incumbents, or political candidates.**



# Possible Neighborhoods / Communities



# Public Mapping and Map Review Tools

---

- **Different tools for different purposes**
- **Different tools for different levels of technical skill and interest**
  - Simple “review draft maps” tool
  - Easy-to-use “Draw your neighborhood” tool
  - Paper- and Excel-based simple “Draw a draft map” tools
  - Powerful, data-rich “Draw a draft map” tool

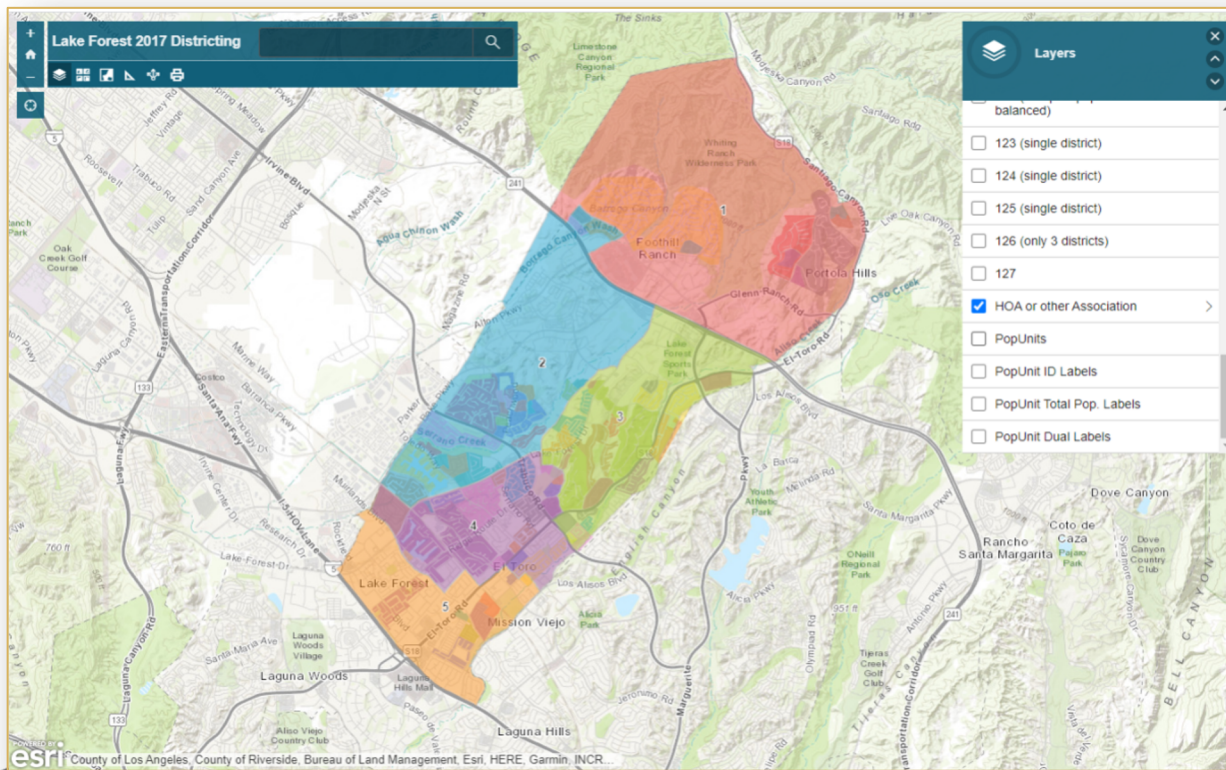
Whether you use the powerful (but complicated) online mapping tool, Excel, the paper kit, or just draw on a napkin, we welcome your maps!



# Simple Map Review Tool

## Online Interactive Review Map

- ESRI's "ArcGIS Online" – similar to Google Maps in ease of use
- Used to review, analyze and compare maps, not to create them
- Includes overlays of "community of interest" and other data



# Simple Map Drawing Tool

## Paper “Public Participation Kit”

- For those without internet access or who prefer paper
- Total Population Counts only – no demographic numbers

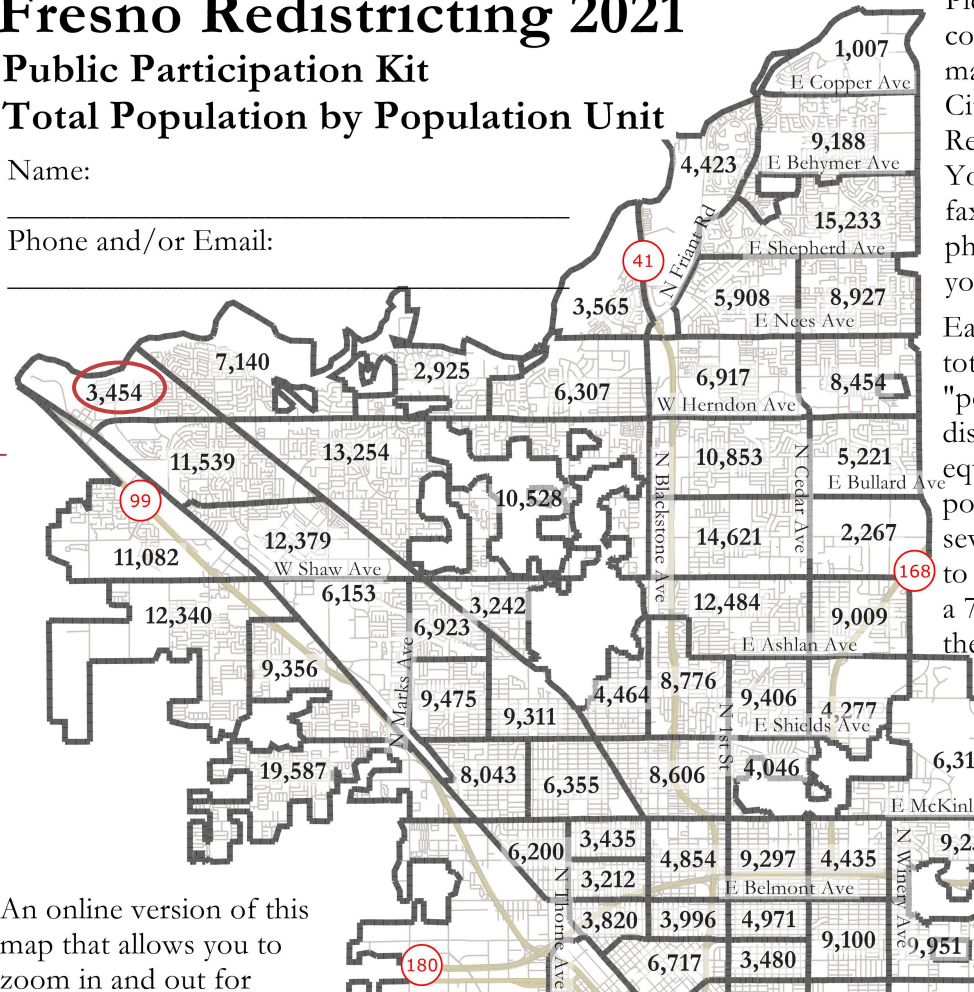
## Fresno Redistricting 2021

### Public Participation Kit

### Total Population by Population Unit

Name: \_\_\_\_\_

Phone and/or Email: \_\_\_\_\_



An online version of this map that allows you to zoom in and out for





# Simple Map Drawing Tool + Excel Supplement

## “Public Participation Kit”

- For those who know Excel and do not wish to use online tools
- Adds CVAP data
- Excel does the math

### Fresno Redistricting 2011

Public Participation Kit  
Population Unit by ID Number

Use this map with Microsoft Excel.

Name: \_\_\_\_\_

Phone and/or Email: \_\_\_\_\_

Please  
colore  
map, t  
City H  
Redist  
You c  
fax, sc  
photo  
your n

AutoSave On Lake Forest 5-district Kit\_ENG.xlsx

File Home Insert Page Layout Formulas Data Review View Help Acrobat

Garamond 9 A A

Clipboard Font Alignment Number

Distict	Unit	Total Population					Voting Age Population					Citizen Voting Age Population					Nov. 2014 Registration				
		Tot. Pop.	Hisp	NH Wht	NH Blk	NH Asn	total	Hisp	Wht	Blk	Asn	tot	Hisp	Wht	Blk	Asn	tot	latino	asn	fil	tot
1	1	1,216	612	557	18	15	873	397	442	12	831	390	441	0	0	574	195	7	3	245	63
2	2	2,367	1,128	1,055	43	96	1,784	741	899	74	1,915	730	1,140	0	45	1,299	435	14	7	555	140
3	3	1,643	768	278	42	25	1,036	741	236	15	400	235	145	0	20	505	286	3	4	161	73
4	4	1,768	734	855	62	84	1,272	464	685	62	1,231	461	639	19	111	1,022	366	11	11	391	89
5	5	2,001	209	1,655	14	79	1,639	144	1,392	64	1,511	88	1,337	12	38	1,776	146	46	7	1,089	67
6	6	612	56	499	4	39	517	37	440	26	471	22	423	3	15	525	38	15	2	337	18
7	7	1,753	1,180	561	70	10	1,945	767	474	10	780	335	410	0	0	797	378	7	4	241	70

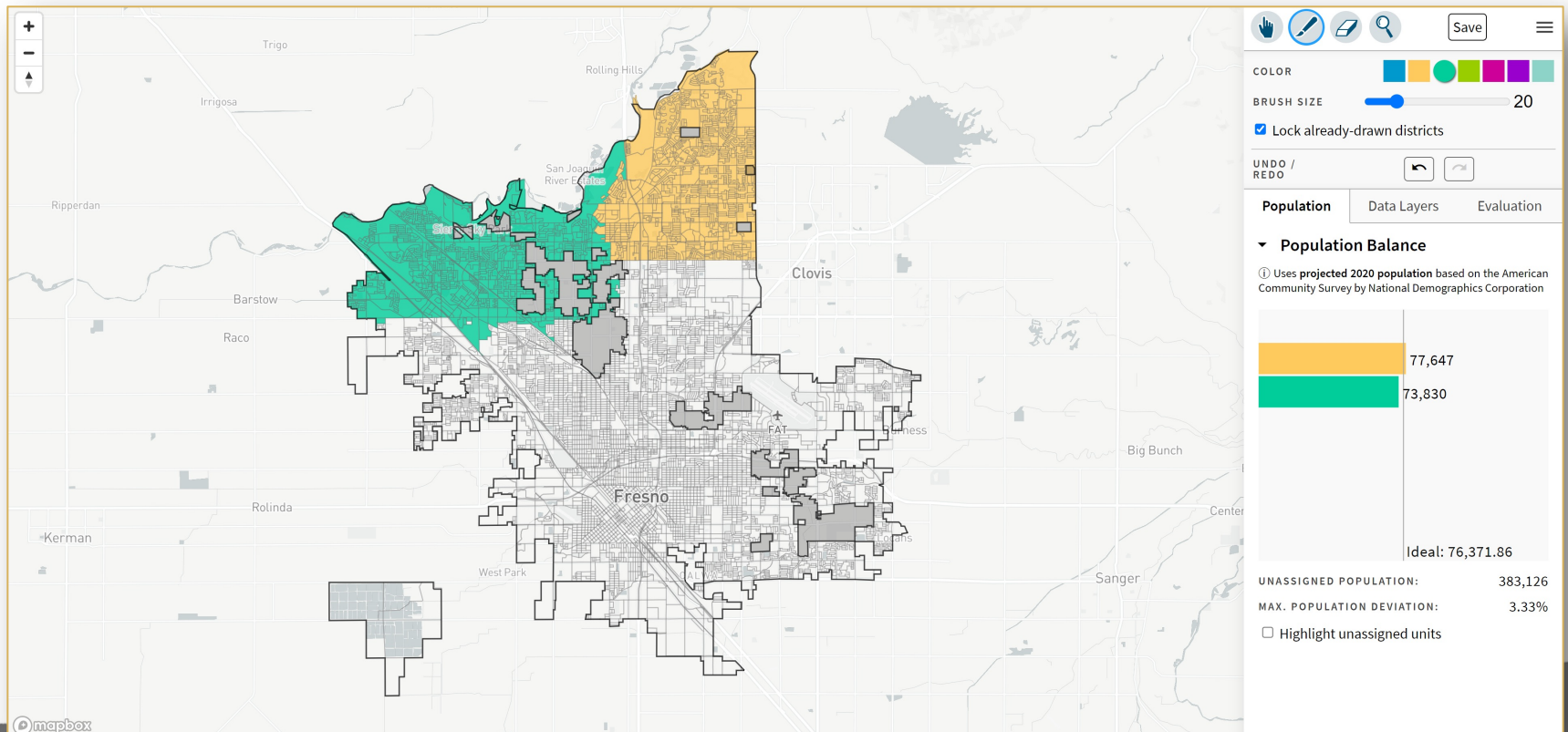
Group	Category	Counts							Unassigned	Total	Percentages							Unassigned	Total	
		1	2	3	4	5	6	7			1	2	3	4	5	6	7			
Total Population	Total Pop.	0	0	0	0	0	0	0	0	107,197	107,197	0	-100%	-100%	-100%	-100%	-100%	-100%	-100%	0.00%
Total Population	Deviation from Ideal	-15,314	-15,314	-15,314	-15,314	-15,314	-15,314	-15,314	0	0	0	0	0	0	0	0	0	0	0	0
	Hispanic	0	0	0	0	0	0	0	34,182	34,182	0	#DIV/0!	#DIV/0!	#DIV/0!	#DIV/0!	#DIV/0!	#DIV/0!	#DIV/0!	#DIV/0!	32%
	NH White	0	0	0	0	0	0	0	64,294	64,294	0	#DIV/0!	#DIV/0!	#DIV/0!	#DIV/0!	#DIV/0!	#DIV/0!	#DIV/0!	#DIV/0!	60%
Voting Age Population	NH Black	0	0	0	0	0	0	0	1,919	1,919	0	#DIV/0!	#DIV/0!	#DIV/0!	#DIV/0!	#DIV/0!	#DIV/0!	#DIV/0!	#DIV/0!	2%
	NH Asian	0	0	0	0	0	0	0	4,530	4,530	0	#DIV/0!	#DIV/0!	#DIV/0!	#DIV/0!	#DIV/0!	#DIV/0!	#DIV/0!	#DIV/0!	4%
	Total CVAP	0	0	0	0	0	0	0	83,090	83,090	0	#DIV/0!	#DIV/0!	#DIV/0!	#DIV/0!	#DIV/0!	#DIV/0!	#DIV/0!	#DIV/0!	21%
Citizen Voting Age Population	Hispanic	0	0	0	0	0	0	0	22,928	22,928	0	#DIV/0!	#DIV/0!	#DIV/0!	#DIV/0!	#DIV/0!	#DIV/0!	#DIV/0!	#DIV/0!	28%
	NH White	0	0	0	0	0	0	0	53,857	53,857	0	#DIV/0!	#DIV/0!	#DIV/0!	#DIV/0!	#DIV/0!	#DIV/0!	#DIV/0!	#DIV/0!	59%
	NH Black	0	0	0	0	0	0	0	3,401	3,401	0	#DIV/0!	#DIV/0!	#DIV/0!	#DIV/0!	#DIV/0!	#DIV/0!	#DIV/0!	#DIV/0!	2%
Nov. 2014 Registration	NH Asian	0	0	0	0	0	0	0	2,630	2,630	0	#DIV/0!	#DIV/0!	#DIV/0!	#DIV/0!	#DIV/0!	#DIV/0!	#DIV/0!	#DIV/0!	14%
	Total CVAP	0	0	0	0	0	0	0	63,996	63,996	0	#DIV/0!	#DIV/0!	#DIV/0!	#DIV/0!	#DIV/0!	#DIV/0!	#DIV/0!	#DIV/0!	60%
	Total Reg.	0	0	0	0	0	0	0	15,374	15,374	0	#DIV/0!	#DIV/0!	#DIV/0!	#DIV/0!	#DIV/0!	#DIV/0!	#DIV/0!	#DIV/0!	8%
Nov. 2014 Votes	Latino	0	0	0	0	0	0	0	1,100	1,100	0	#DIV/0!	#DIV/0!	#DIV/0!	#DIV/0!	#DIV/0!	#DIV/0!	#DIV/0!	#DIV/0!	3%
	Asian-American	0	0	0	0	0	0	0	463	463	0	#DIV/0!	#DIV/0!	#DIV/0!	#DIV/0!	#DIV/0!	#DIV/0!	#DIV/0!	#DIV/0!	3%
	Filipino	0	0	0	0	0	0	0	30,448	30,448	0	#DIV/0!	#DIV/0!	#DIV/0!	#DIV/0!	#DIV/0!	#DIV/0!	#DIV/0!	#DIV/0!	28%
Nov. 2014 Votes	Total Votes	0	0	0	0	0	0	0	4,317	4,317	0	#DIV/0!	#DIV/0!	#DIV/0!	#DIV/0!	#DIV/0!	#DIV/0!	#DIV/0!	#DIV/0!	0%
	Latino	0	0	0	0	0	0	0	461	461	0	#DIV/0!	#DIV/0!	#DIV/0!	#DIV/0!	#DIV/0!	#DIV/0!	#DIV/0!	#DIV/0!	11%
	Asian-American	0	0	0	0	0	0	0	181	181	0	#DIV/0!	#DIV/0!	#DIV/0!	#DIV/0!	#DIV/0!	#DIV/0!	#DIV/0!	#DIV/0!	4%
Nov. 2014 Votes	Filipino	0	0	0	0	0	0	0	164	164	0	#DIV/0!	#DIV/0!	#DIV/0!	#DIV/0!	#DIV/0!	#DIV/0!	#DIV/0!	#DIV/0!	4%

Submitter's Comments about the plan:  
I think this map might have been...

# DistrictR

## “Draw Your Community of Interest” focus

- [districtR.org/tag/FresnoCity](https://districtR.org/tag/FresnoCity)
- Also includes simple district-mapping tool; Only available in English
- Similar external options: [Representable.org](https://representable.org), [DrawMyCACommunity.org](https://drawmycacomunity.org)

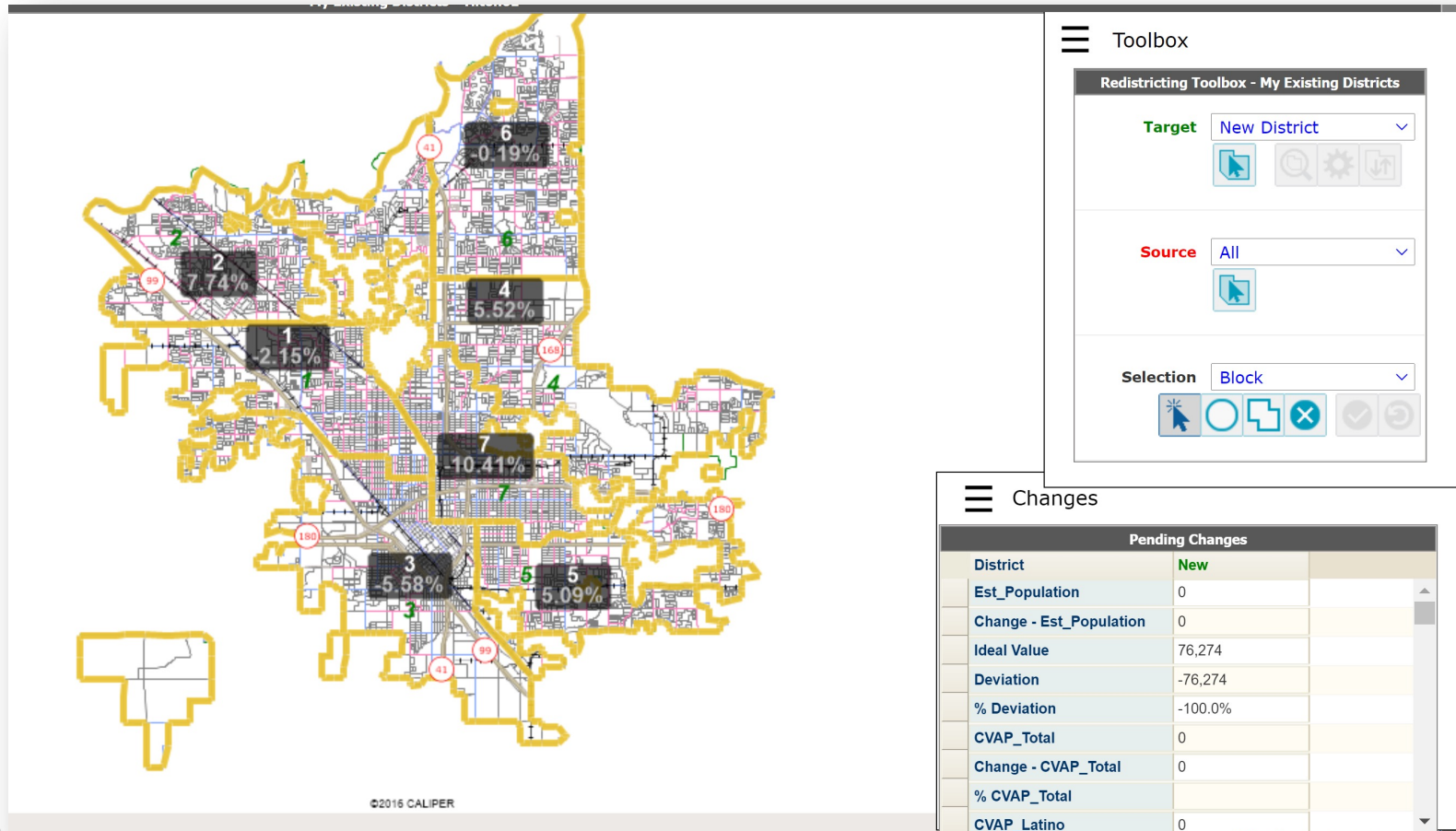




# Caliper's "Maptitude Online Redistricting"

## Full Database, Powerful Online Mapping Tool

- <https://inzolia.caliper.com/FresnoCity>
- Powerful, common, data-rich online tool; six language options



# Share Your Thoughts

---



**WEBSITE:**

[www.RedistrictFresno.com](http://www.RedistrictFresno.com)

**PHONE:**

**559.621.7837**

**EMAIL:**

[RedistrictFresno@Fresno.gov](mailto:RedistrictFresno@Fresno.gov)



# Public Hearing & Discussion

---

- ❑ What is your neighborhood and what are its boundaries?
- ❑ What other notable areas are in the City, and what are their boundaries?
- ❑ Any questions about the mapping tools?

## Council discussion on:

- “neighborhoods”
- “communities of interest”

