

The background of the slide is a blurred image of a transit map with various colored lines (blue, orange, red, green) representing different routes. A hand is visible, pointing at one of the routes on the map.

# SOUTHWEST COMMUNITY CONNECTOR (SWCC) ROUTE OPTIONS

Fresno Area Express (FAX)  
August 2022 Workshops

# WELCOME AND INTRODUCTIONS

## FAX Staff

Carolina Ilic, Planning Manager

Jeff Long, Senior Transit Planner

Todd Sobrado, Project Coordinator

# BACKGROUND

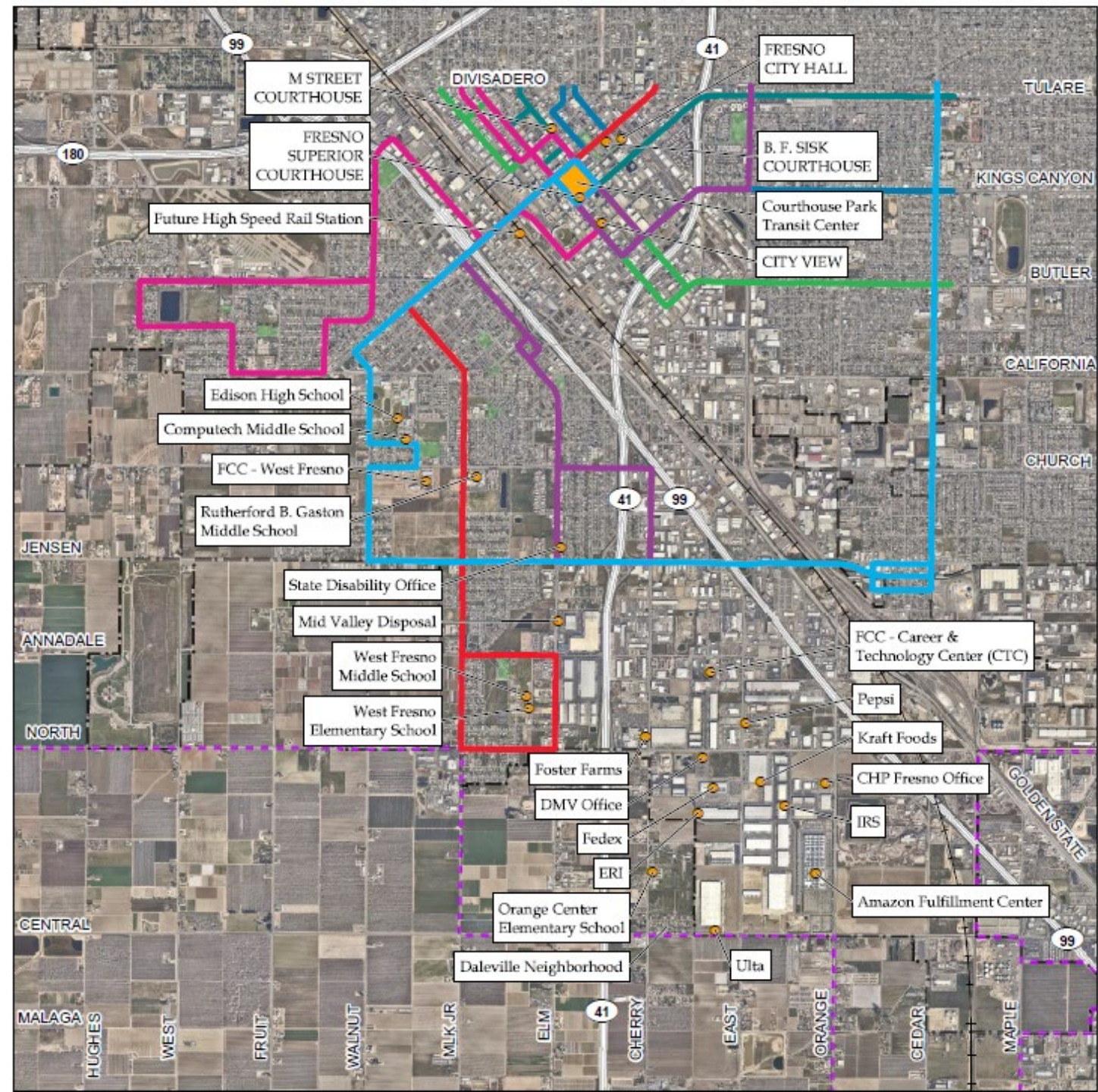
FAX Transit System  
SWCC Project Area

# FAX SYSTEM MAP





# SWCC PROJECT AREA



# PROJECT OVERVIEW

Received Requests for Service

3-Year Grant Funding

Pre-Meeting Outreach

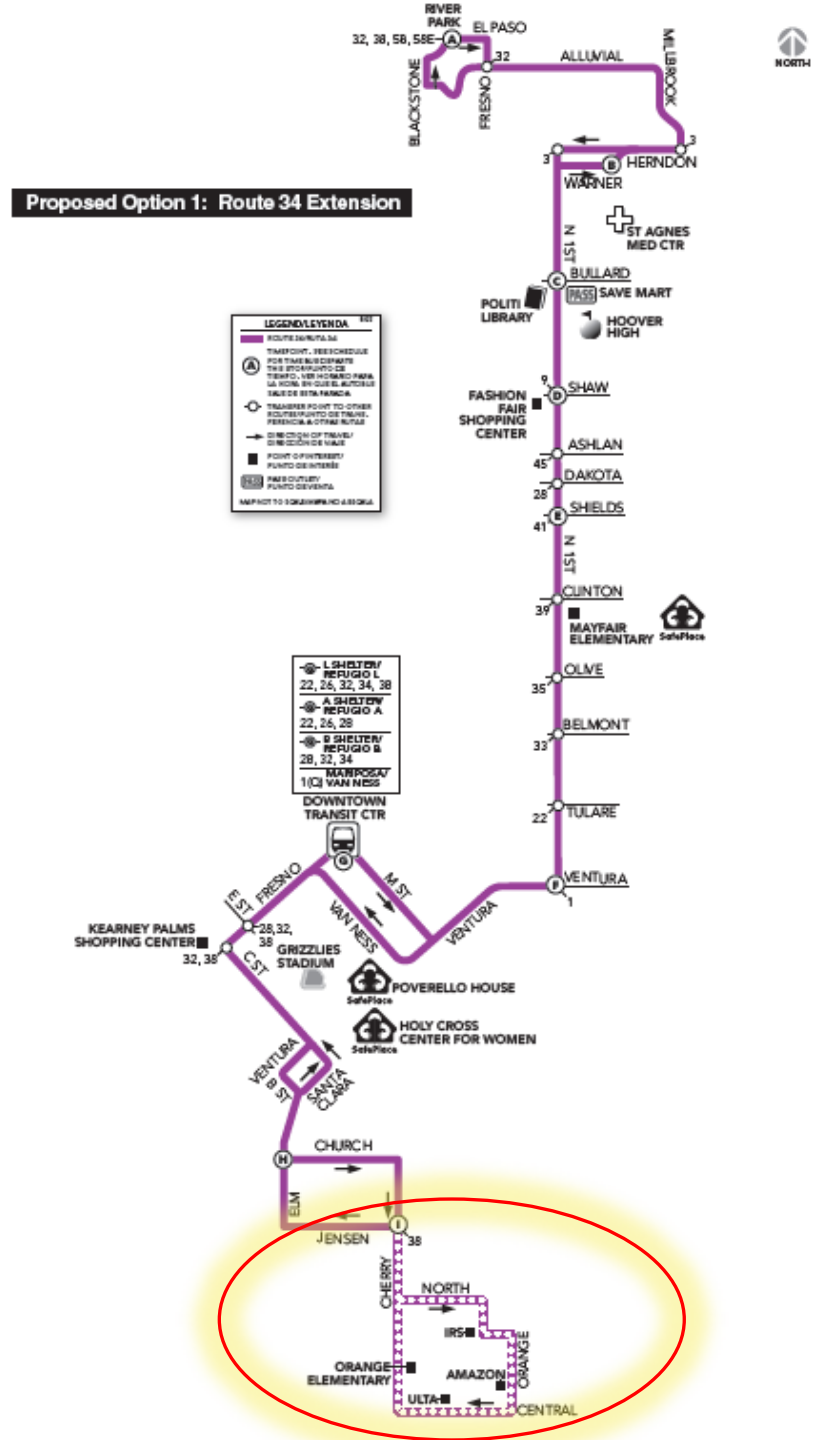
3 Potential Route Alternatives

- Three options
- Potential constraints
- Pros/cons of each option

# WORKSHOP GOALS

Hear your comments  
and preferences on  
the three route options

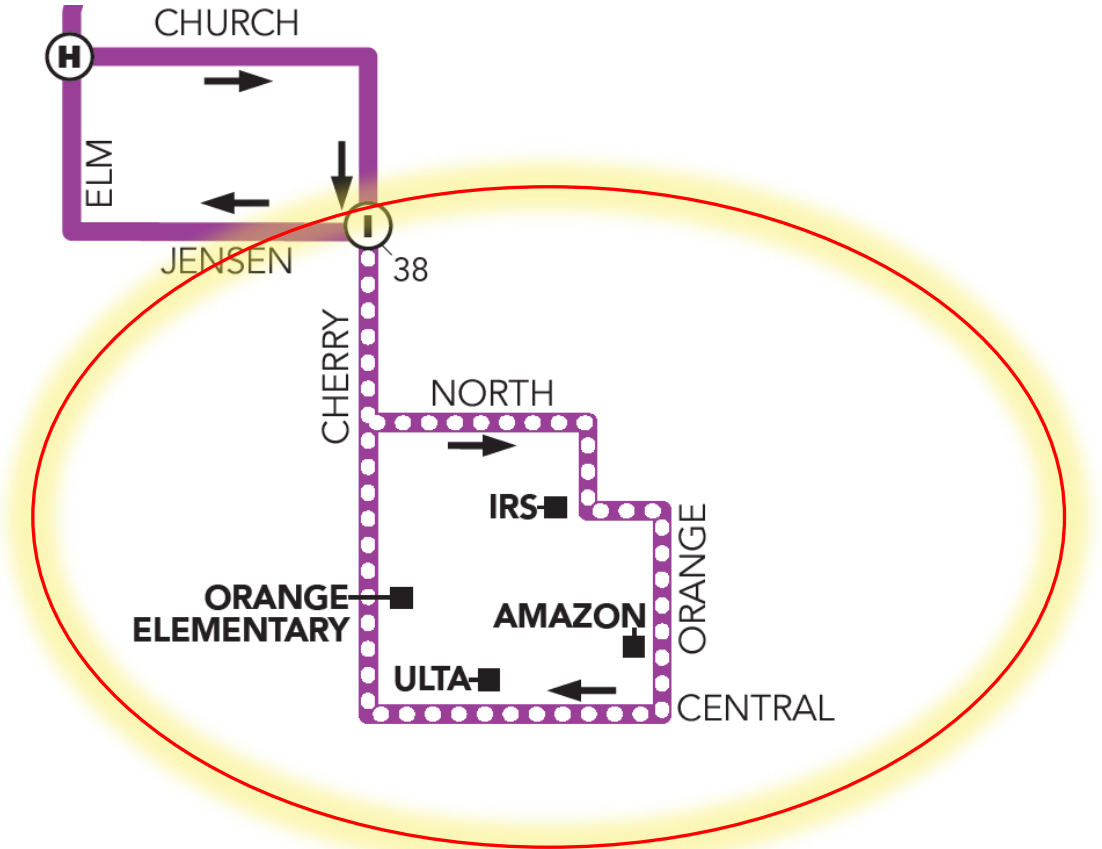
# OPTION 1- RTE 34 EXPANSION AND FREQUENCY IMPROVEMENTS



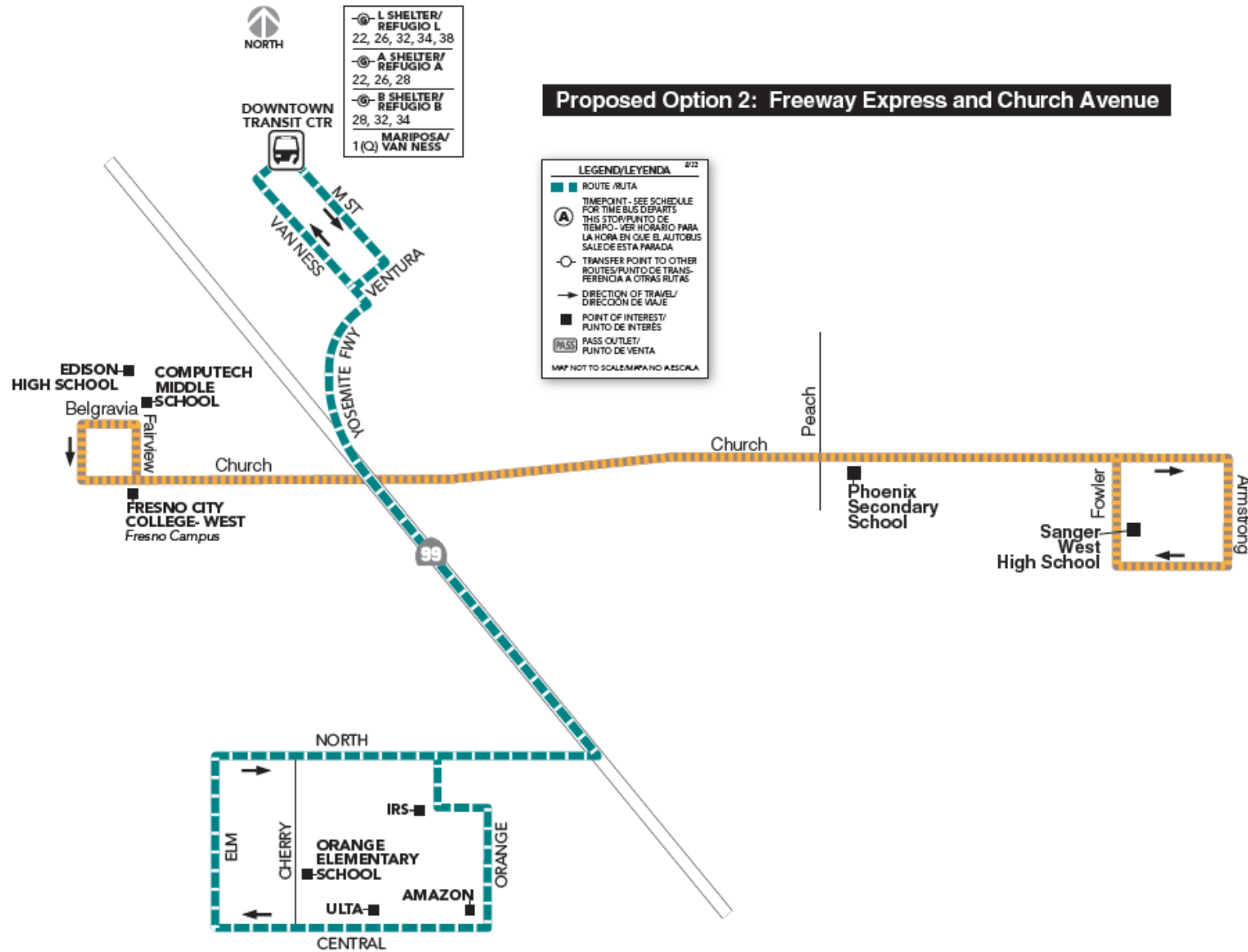


CONTINUED:

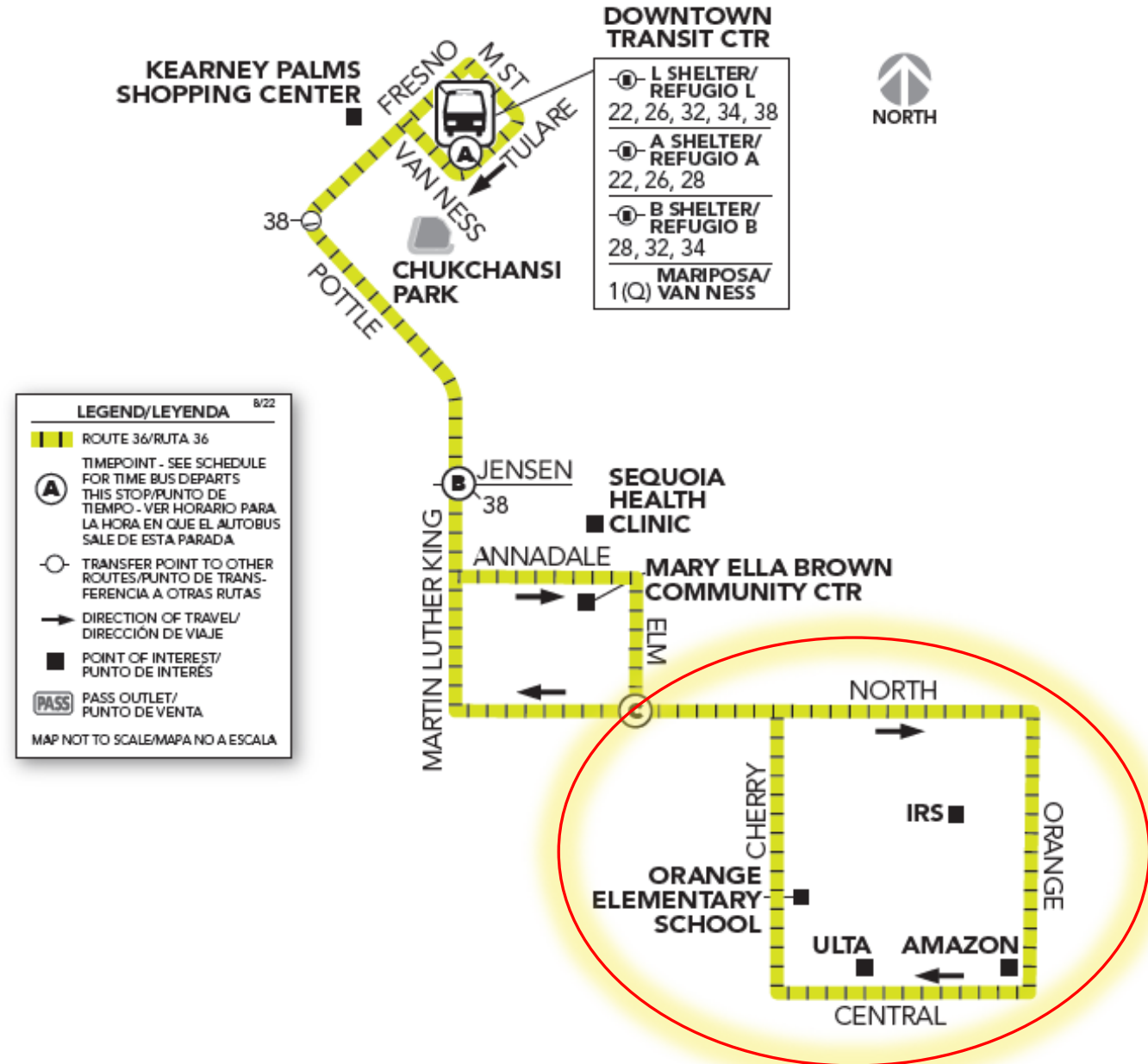
OPTION 1-  
RTE 34  
EXTENSION AND  
FREQUENCY  
ENHANCEMENTS



# OPTION 2 — FREEWAY EXPRESS AND NEW CHURCH AVE ROUTE



### Proposed Option 3: New Route 36



# POLL

What is your favorite option?

1. Option 1: Rte 34 Extension and Frequency Enhancements
2. Option 2: Freeway Express and new Church Avenue Route
3. Option 3: Rte 32 ends at Downtown Transit Center and new Rte 36
4. Other



# WHO ARE OUR PROSPECTIVE PARTNERS?

City Council

Southwest Fresno  
Community

Fresno Housing  
Authority  
CAN Project

North Pointe  
Business Park and  
Businesses

Other City Depts  
(Public Works,  
Planning, Economic  
Development)

Stakeholders

# NEXT STEPS

Additional Analysis

Implementation Timeframe

# QUESTIONS?

## FAX Staff

Carolina Ilic, [carolina.ilic@fresno.gov](mailto:carolina.ilic@fresno.gov)

Jeff Long, [jeff.long@fresno.gov](mailto:jeff.long@fresno.gov)

Harold “Todd” Sobrado, [harold.sobrado@fresno.gov](mailto:harold.sobrado@fresno.gov)