

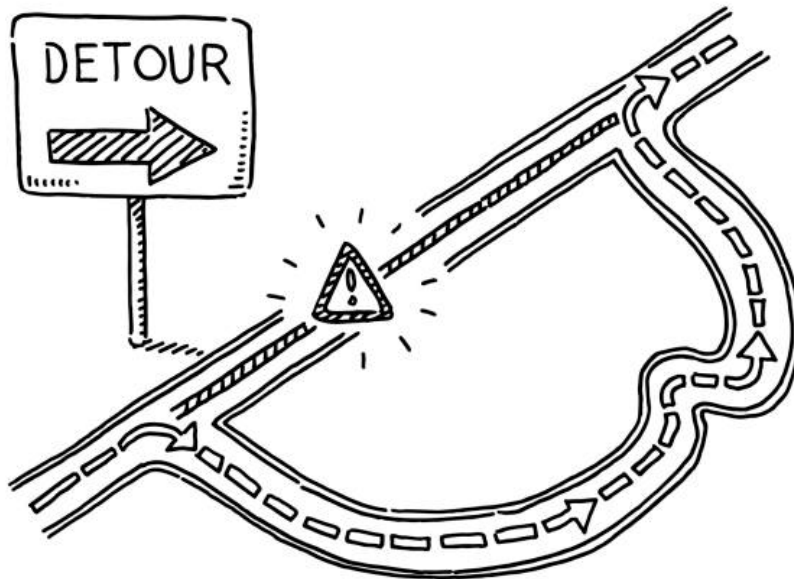
Traffic Handling / Detour Overview

1

- Options to Consider
 - *Faster Construction Duration – Less Access*
 - *Longer Construction Duration – More Access*

Community Input is Needed!

Review the following slides and respond to questions below.



Traffic Handling – Alternative 1 (On-Site Detour)

2

Longest Construction – Most Access

• Key Notes

- 3.0-year construction
- 2 modified at-grade crossings
- Could consider closing one road at a time, but would add 1 year
- Reduced to 4 Lanes on Blackstone, 2 lanes on McKinley
- 2 stage bridge construction
- 5 stage construction under traffic
- 3-week full closure

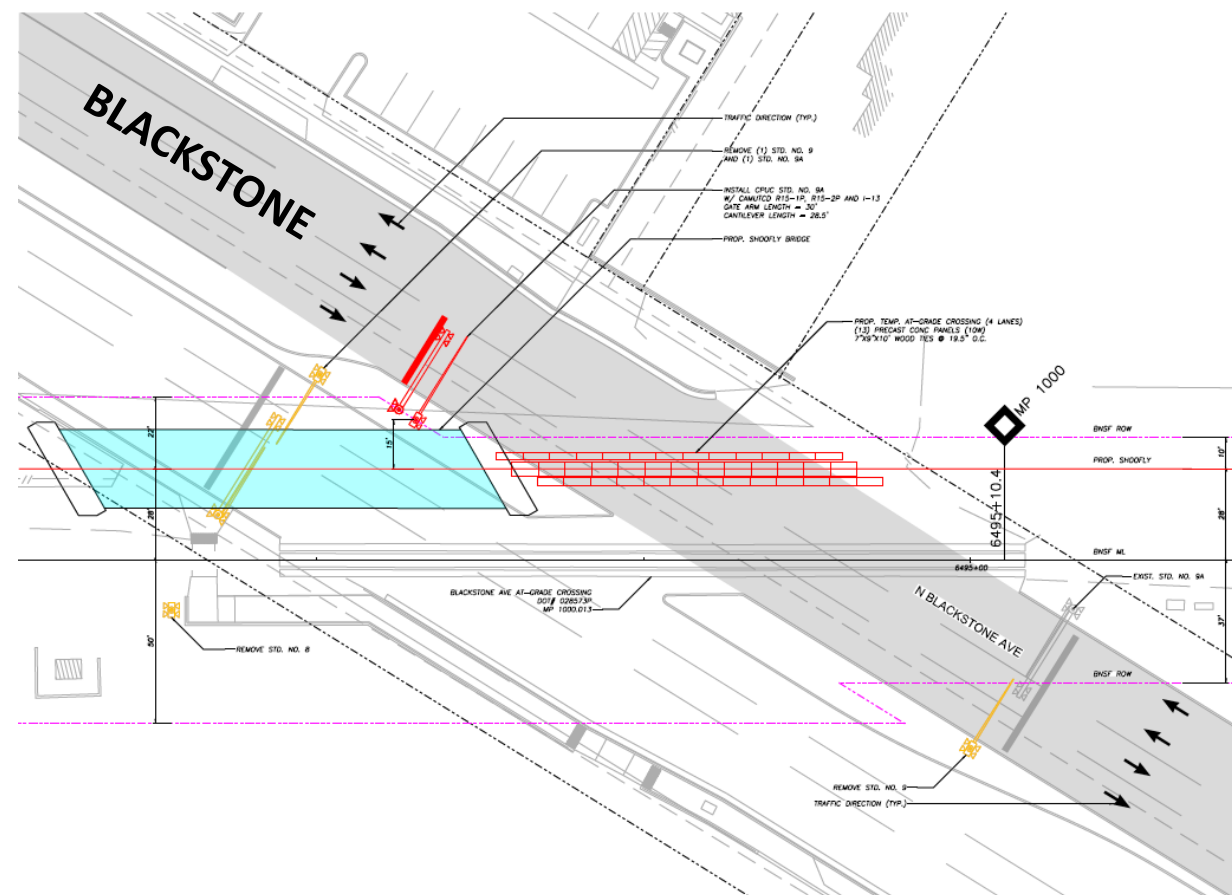
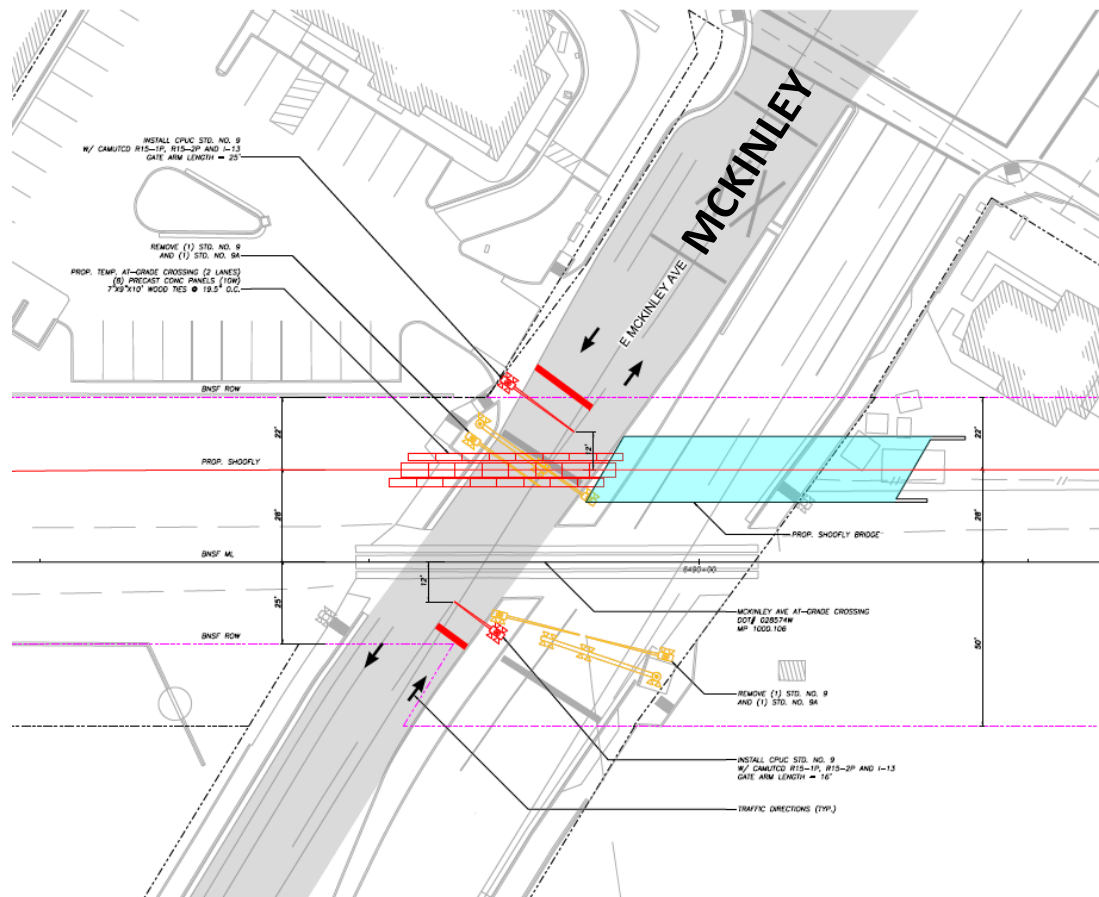
• Stages 1 and 2 shown



Traffic Handling – Alternative 1 (On-Site Detour)

3

• BNSF Railway Shoofly



Traffic Handling – Alternative 1 (On-Site Detour)

4

- Stage 3 Shown
- 3-week road closure for partial intersection construction



Traffic Handling – Alternative 1 (On-Site Detour)

5

- Stage 4 and 5 shown



Traffic Handling – Alternative 2 (On-Site Detour)

6

Mid Term Construction – Mid Access

• Key Notes

- 2.5-year construction
- Requires 2 temporary at-grade crossings
- Consider closing one road at a time, but would add 1 year
- 1 stage bridge construction
- No shoofly bridge/foundation
- 2 stage Construction w/o Traffic
- 3-week full closure for tie-ins

• Stage 1 shown



Traffic Handling – Alternative 2 (On-Site Detour)

7

- Stage 2 shown



Traffic Handling – Alternative 2 (On-Site Detour)

8

- Stage 3 shown
- 3 week closure for tie-in



Traffic Handling – Alternative 2 (On-Site Detour)

9

- Stage 4 shown



Traffic Handling – Alternative 3 (Off-Site Detour)

10

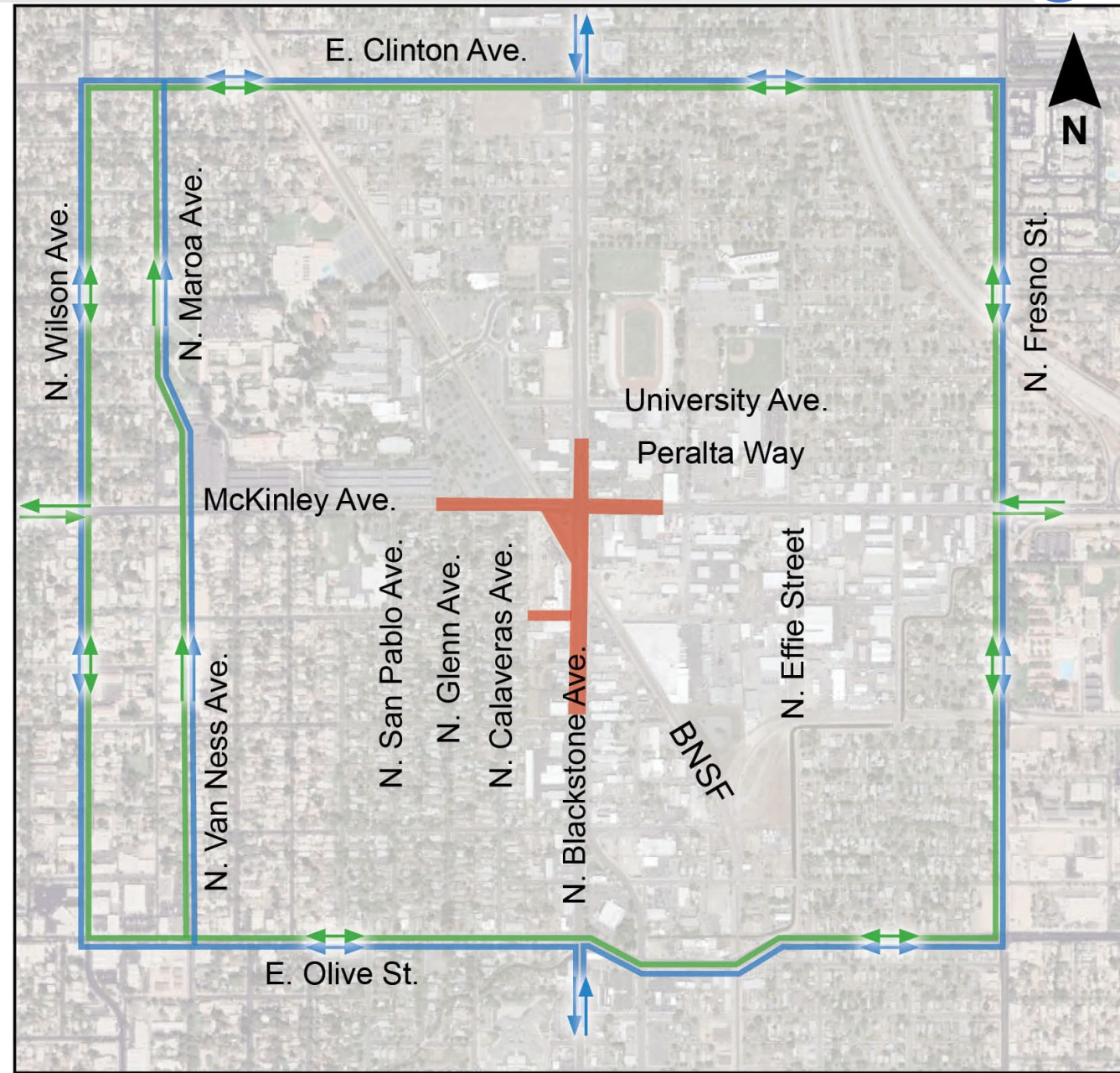
Fastest Construction- Least Access

• Key Notes

- 2.0 Year Construction
- 1 stage Bridge Construction
- No Shoofly Bridge
- 1 stage Constr. with out Traffic
- 24-Month Off-Site Detour
- Truck Route:
 - McKinley, to Palm, to Belmont, to First

LEGEND

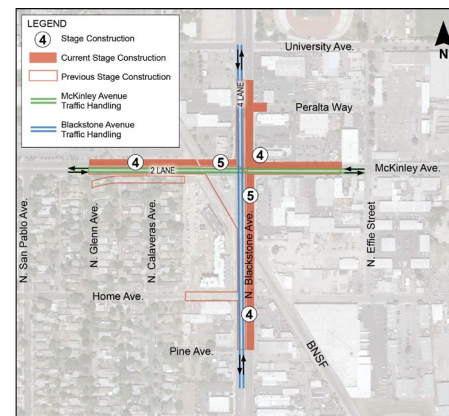
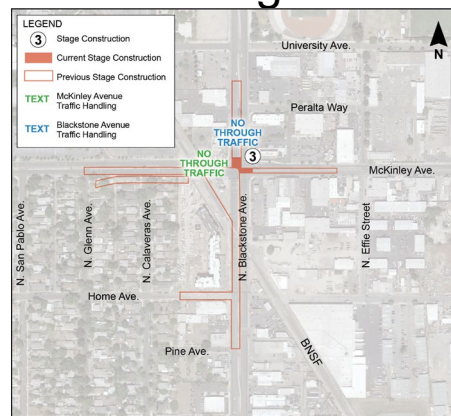
- Current Stage Construction
- McKinley Avenue Traffic Handling
- Blackstone Avenue Traffic Handling



Stage Construction/Traffic Handling/Detours

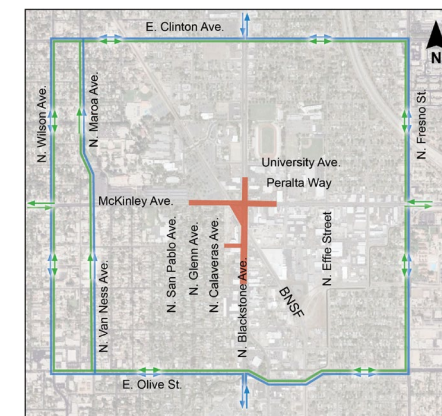
11

Alternative 1 – Longest Construction



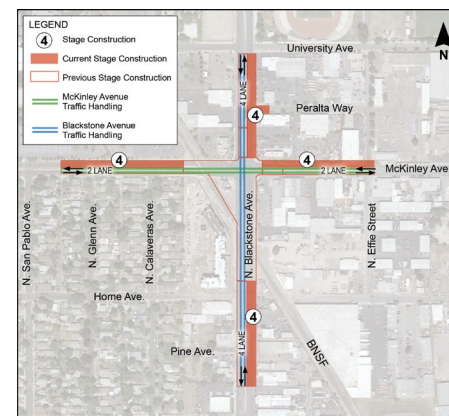
- 3.0 years construction
- Short 3-week road closure

Alternative 3 – Fastest Construction



- 2.0 years construction
- 24 month off- system detour

Alternative 2 - Mid Duration Construction



- 2.5 years construction
- Short 3-week road closure

Traffic Handling / Detour Community Survey

12

Please click on the link below to take the survey:

<https://www.surveymonkey.com/r/GV8ZMWQ>

