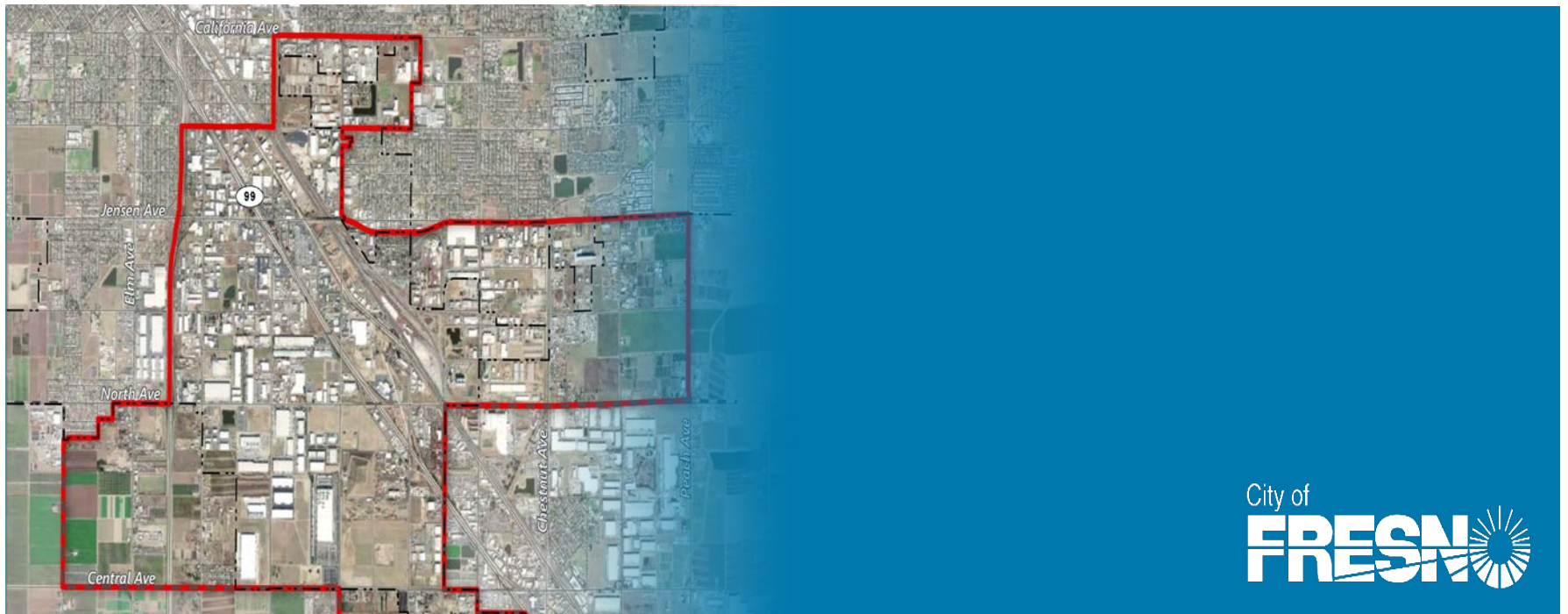


SOUTH CENTRAL SPECIFIC PLAN

COMMUNITY WORKSHOP – JANUARY 13-15, 2020

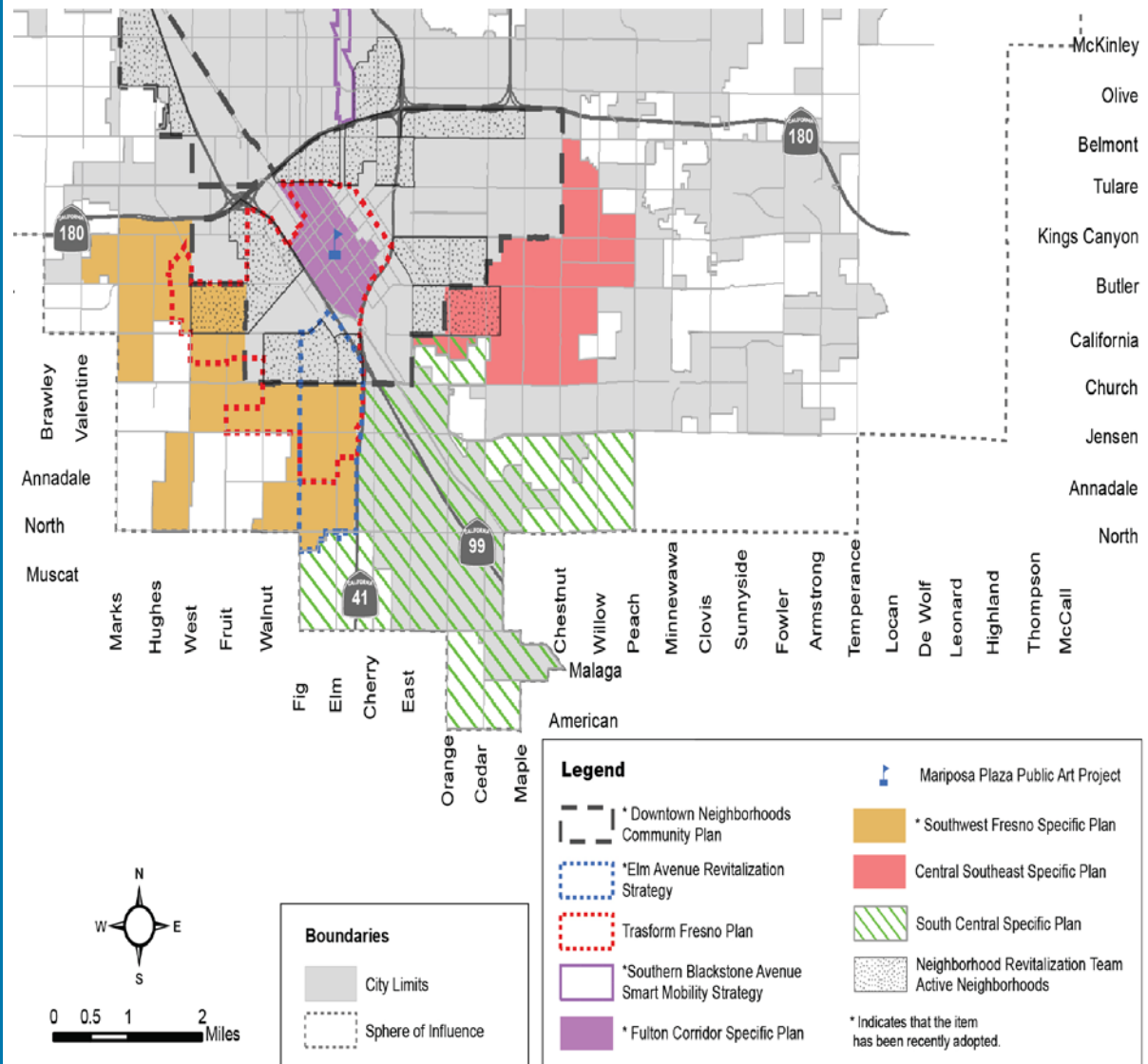


WORKSHOP AGENDA

<u>Time</u>	<u>Item</u>
6:05 – 6:10	Welcome Statement
6:10 – 6:30	Presentation
6:30 – 7:15	Small Group Exercise
7:15 – 7:30	Report Out

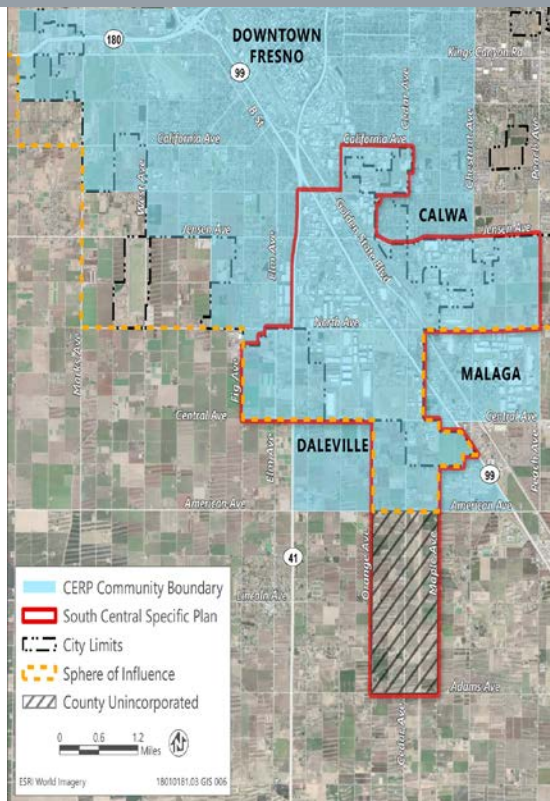
CITY OF FRESNO PLANNING EFFORTS

- **South Central Specific Plan** (formerly called South Industrial Priority Area Specific Plan)
- **Southwest Fresno Specific Plan** (adopted 2017)
- **Central Southeast Specific Plan** (ongoing)
- **Elm Avenue Revitalization Strategy** (adopted 2019)
- **Transform Fresno Plan** (ongoing)
- **Industrial Compatibility Study** (ongoing)

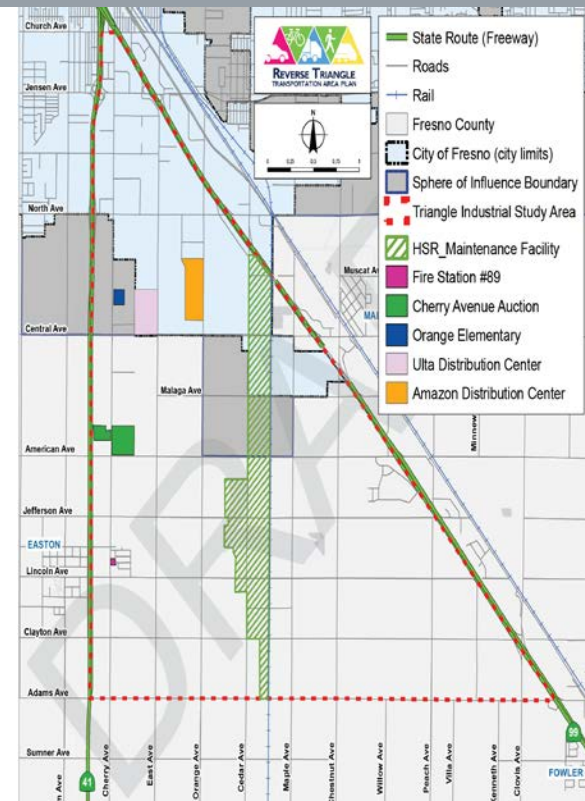


OTHER AGENCY PLANNING EFFORTS

SJVAPCD South Central Fresno Community Emissions Reduction Program (AB 617)

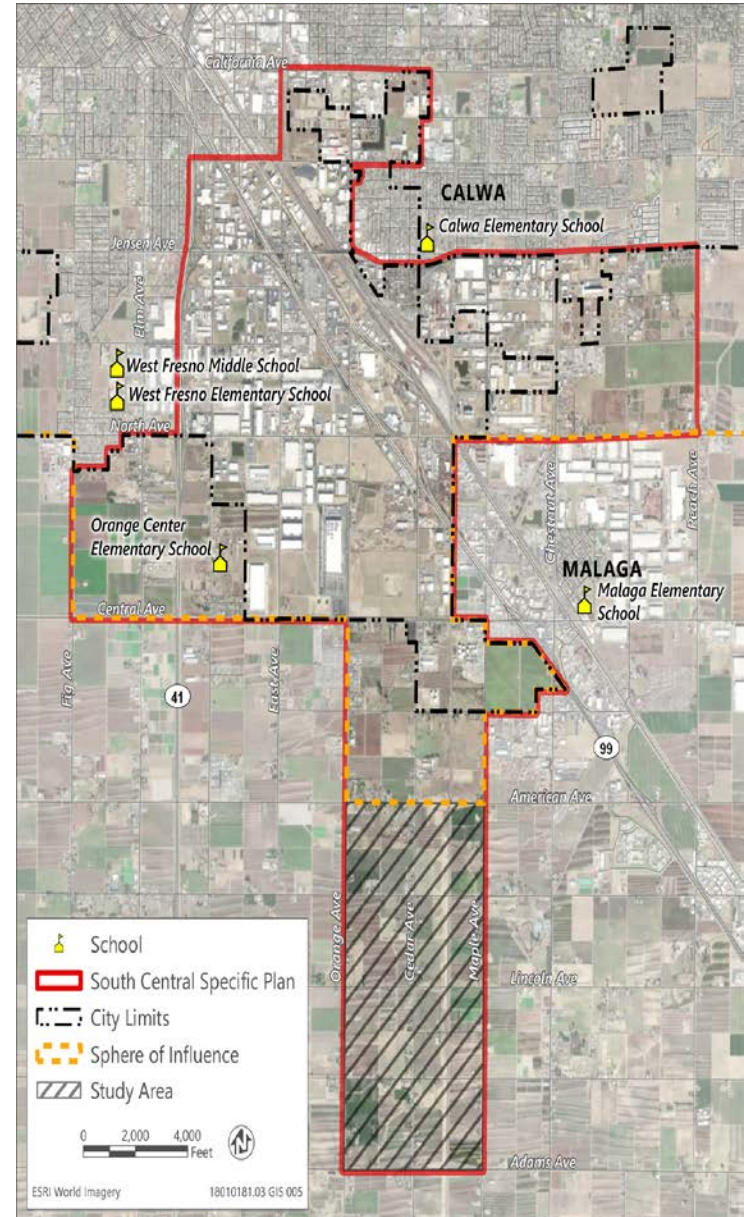


Fresno COG Reverse Triangle Transportation Area Plan



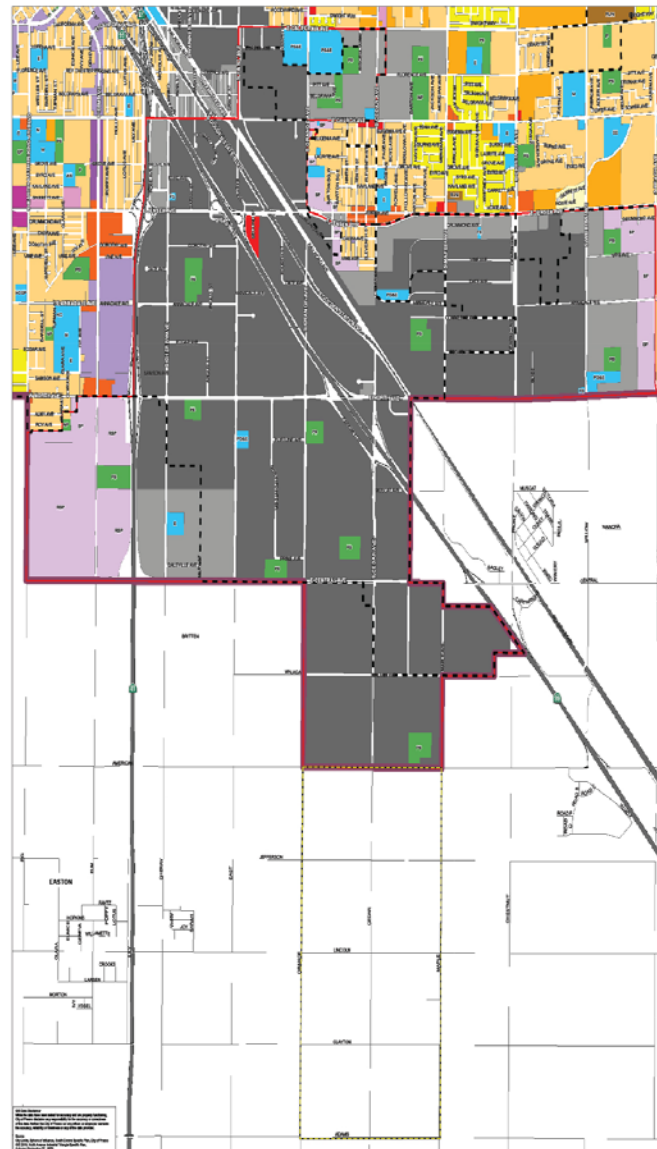
SOUTH CENTRAL SPECIFIC PLAN

- Encompasses the south industrial priority area
- 6,150-acre area, including 1,208 acres in unincorporated county
- Approximately 630 business and almost 13,000 jobs
- 1 school and 460 homes within the plan area
- Communities of Malaga and Calwa are located just outside the plan area



SOUTH CENTRAL SPECIFIC PLAN AREA

- Predominantly industrial due to its proximity to the railroad and highways
- Businesses include manufacturing, recycling, and distribution
- Southern portion of the plan is identified for the HSR maintenance yard
- High levels of poverty and unemployment



RESIDENTIAL

- Low Density (1-3.5 D.U./acre)
- Medium Low Density (3.5-6 D.U./acre)
- Medium Density (5.0-12 D.U./acre)
- Medium High Density (12-16 D.U./acre)
- Urban Neighborhood (16-30 D.U./acre)

COMMERCIAL

- Community
- General
- Regional

EMPLOYMENT

- Office
- Business Park
- Regional Business Park
- Light Industrial
- Heavy Industrial

MIXED USE

- Neighborhood Mixed Use
- Corridor/Center Mixed Use

OPEN SPACE

- Community Park
- Neighborhood Park
- Open Space
- Park
- Ponding Basin

PUBLIC FACILITIES

- Public/Quasi-public Facility
- Special School
- Elementary School
- Middle School
- College
- Fire Station
- Hospital
- Neighborhood Center
- PG & E Substation
- Water Recharge Basin

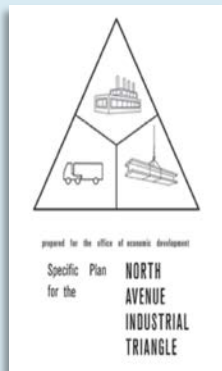
BOUNDARIES

- South Central Specific Plan
- Study Area
- City Limits
- Sphere Of Influence

0 0.5 1 MILES

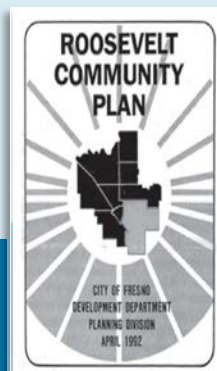


FOUNDATIONAL PLANS

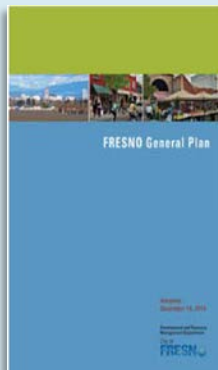


North Avenue Industrial Triangle Specific Plan (1973)

Roosevelt Community Plan (1992)

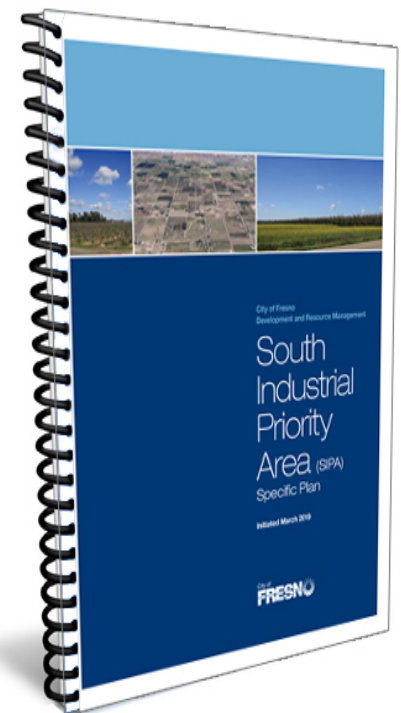
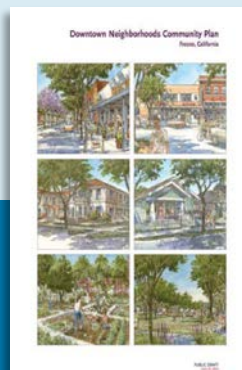


Southwest Fresno Specific Plan (2017)



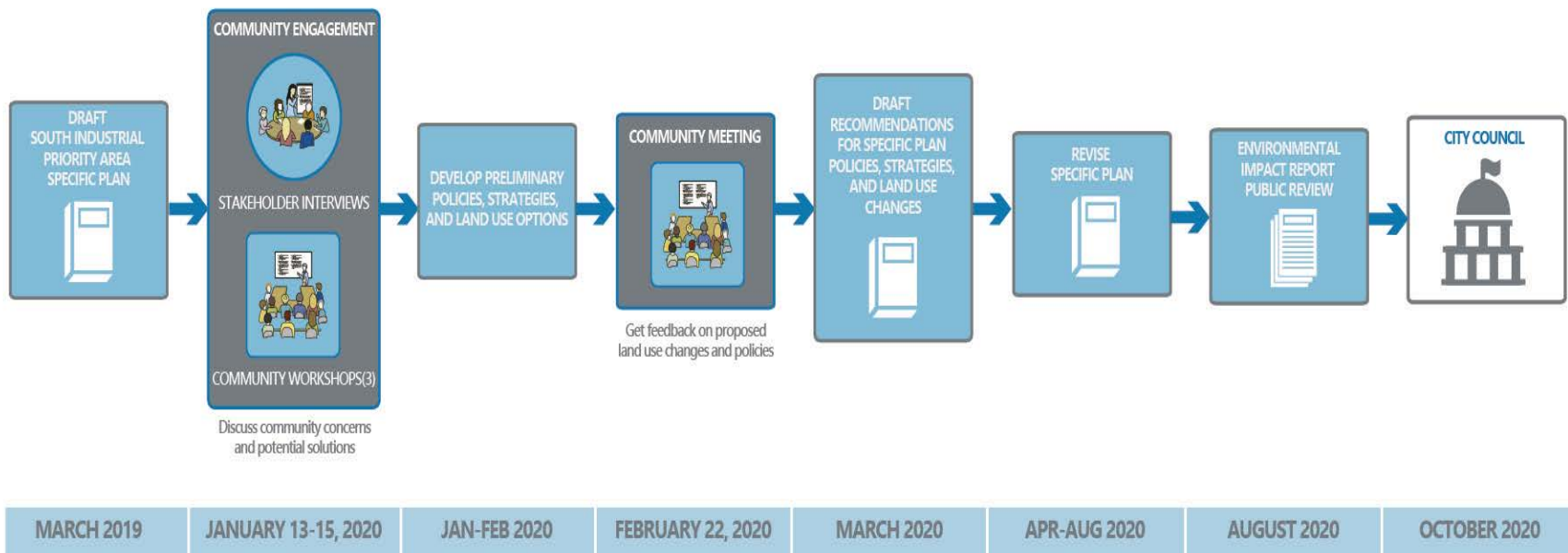
Fresno General Plan (2014)

Downtown Neighborhoods Community Plan (2016)



Draft South Industrial Priority Area Specific Plan (March 2019)

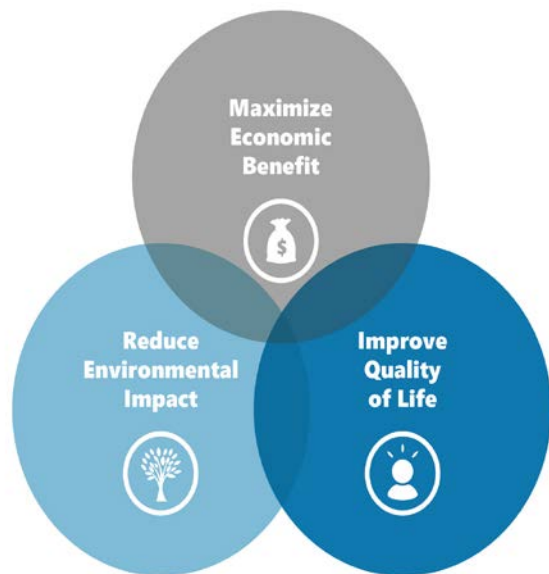
SPECIFIC PLAN PROCESS



OVERARCHING GOAL

GOAL

To maximize economic benefit and job growth for residents, while reducing impacts on the environment and improving quality of life.



POTENTIAL STRATEGIES

- Expand employment opportunities
 - Number and quality of jobs
- Job/Skills training
- Transportation improvements
- Physical improvements
 - Landscape improvements
 - Buffers
- Development standard modifications
 - Building setbacks

SMALL GROUP ACTIVITY

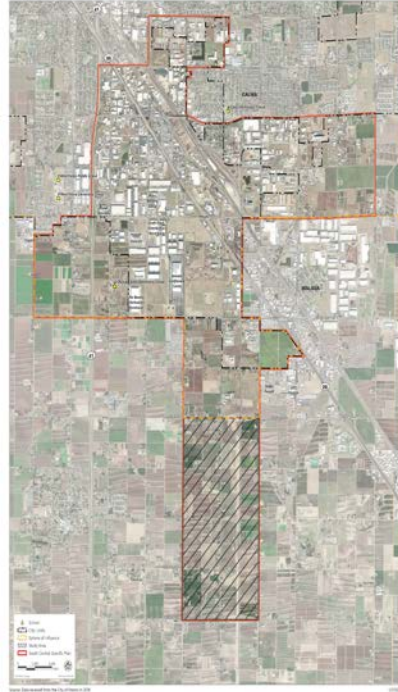
- **Positive Attributes and Advantages** (5 minutes)
- **Issues and Concerns** (25 minutes)
 - Safety
 - Air Quality; Environmental Impacts
 - Water, Sewer, and Drainage
 - Transportation and Mobility
 - Employment Opportunities
- **Potential Solutions** (15 minutes)
- **Regroup and Report Out** (15 minutes)

City of FRESNO

SOUTH CENTRAL SPECIFIC PLAN COMMUNITY WORKSHOP

Date of Meeting: _____ Table #: _____ Facilitator Name: _____

MAJOR ADVANTAGES	
ISSUES/CONCERNS	POTENTIAL SOLUTIONS
SAFETY	
AIR QUALITY/ENVIRONMENTAL IMPACTS	
WATER, SEWER, & DRAINAGE	
TRANSPORTATION AND MOBILITY	
EMPLOYMENT OPPORTUNITIES	
OTHER	



Small Group Activity Time Tracker

Positive Attributes and Advantages

5 MINUTES

Small Group Activity Time Tracker

Issues and Concerns

25 MINUTES

Small Group Activity Time Tracker

Potential Solutions

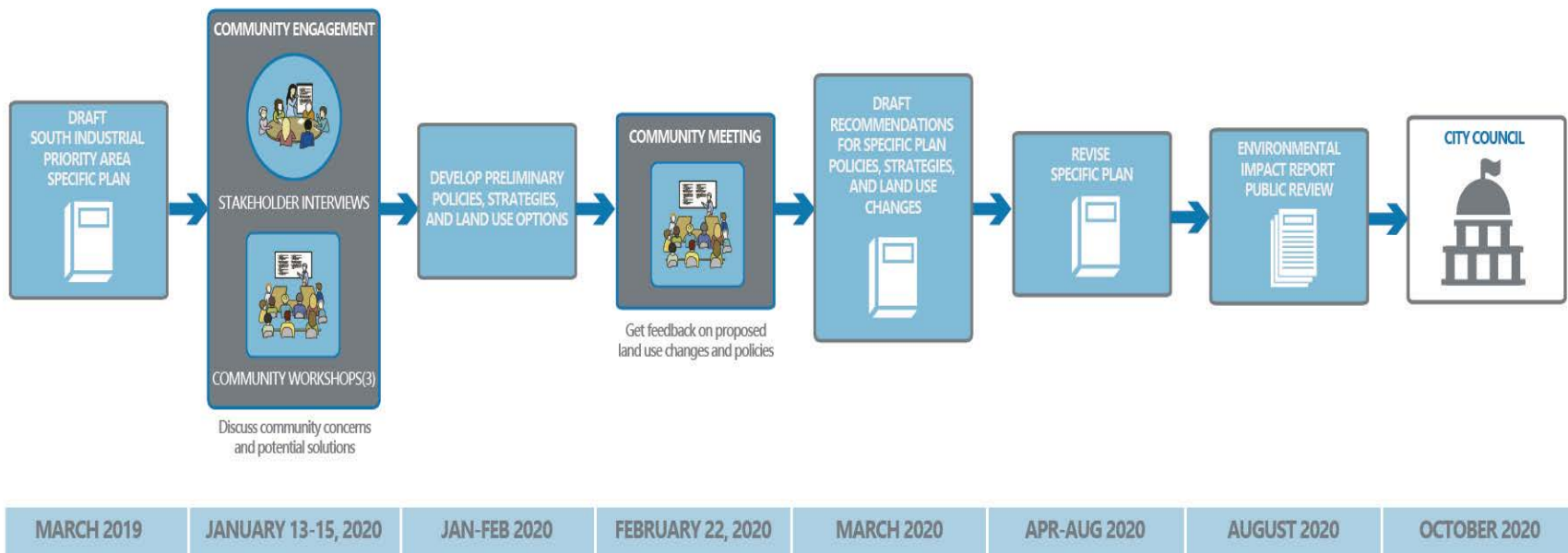
15 MINUTES

Small Group Activity Time Tracker

Regroup and Report

15 MINUTES

NEXT STEPS





THANK YOU

FOR MORE INFORMATION PLEASE VISIT: WWW.FRESNO.GOV/SCSP

EMAIL COMMENTS AND QUESTIONS TO: SCSP@FRESNO.GOV

