

Southern Blackstone Avenue Smart Mobility Strategy



BETTER BLACKSTONE ASSOCIATION

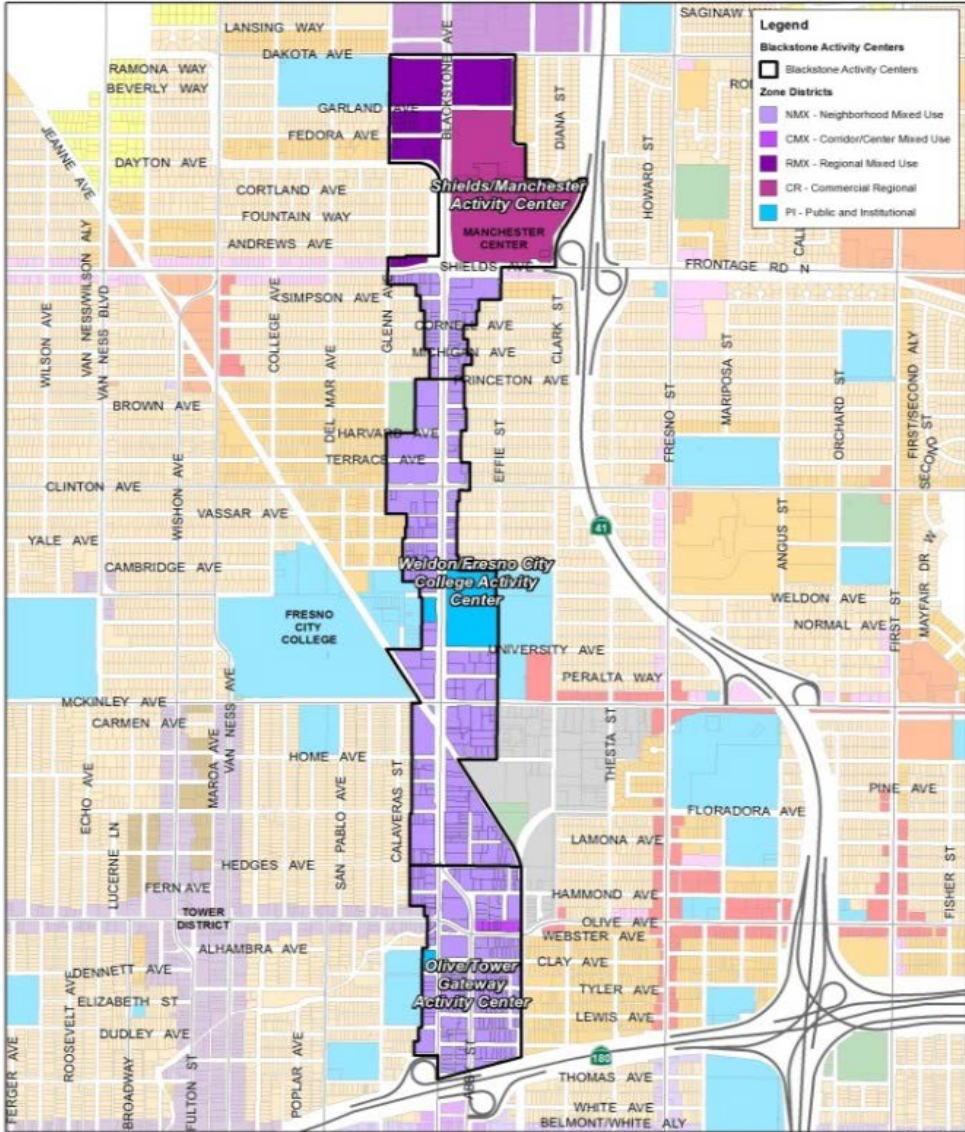
Wednesday, March 27, 2019
Manchester Shopping Center
Room 209



Purpose of Smart Mobility Plan

- Develop a complete streets strategy that include recommendations for project improvements to the street, sidewalks, intersections, and adjacent properties
- Improvements incorporate the following:
 1. Increased safety and access to all travel modes
 2. Identify and address impacts on business opportunities
 3. Enhance the streetscape
 4. Improve pedestrian crossings
 5. Improve bicycle access and facilities
 6. Improve gateway and wayfinding signage

Project Area



What are Complete Streets?

“Complete streets are streets for everyone.”

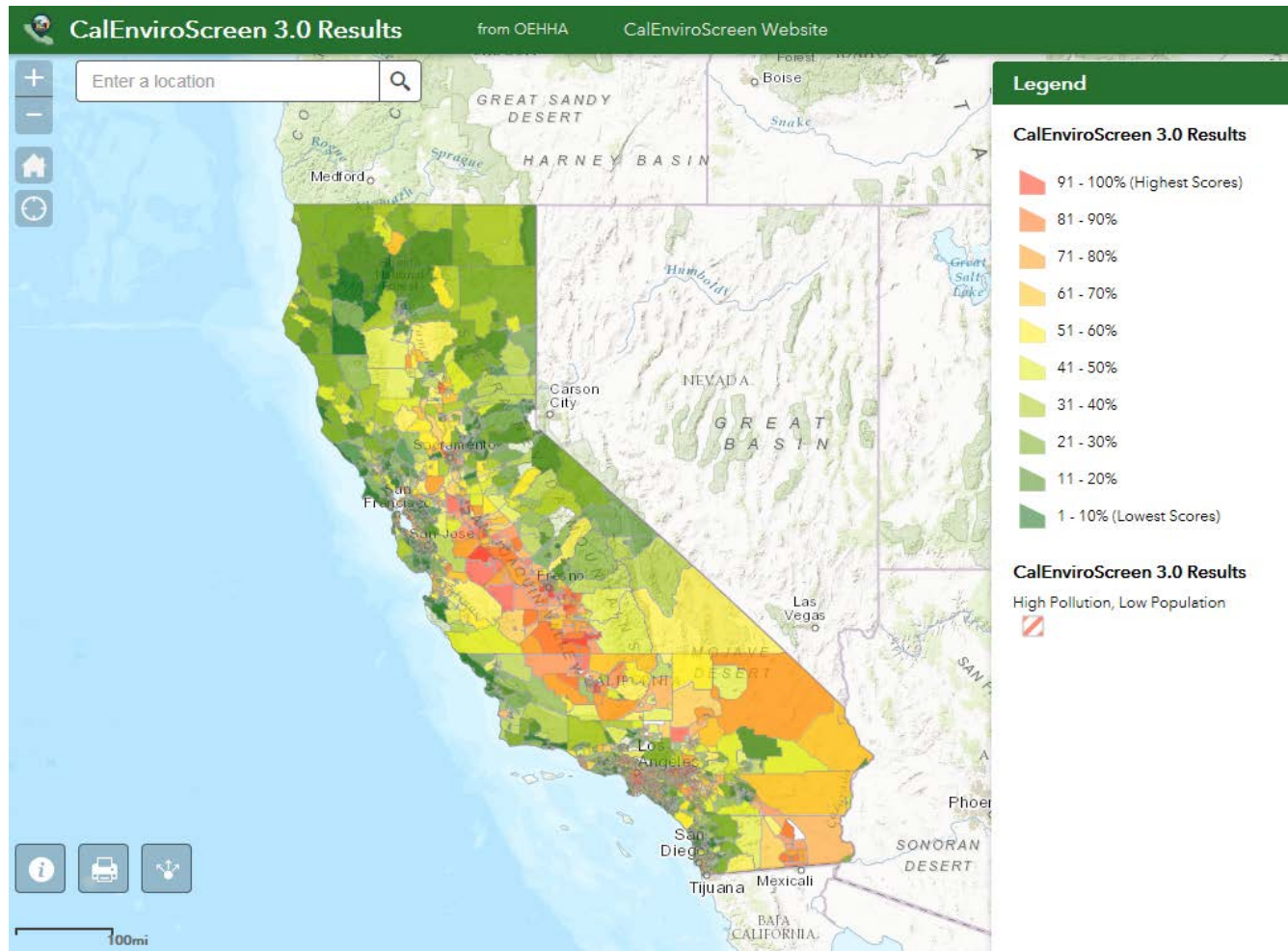
1. Transit users
2. Motorists
3. Bicyclists
4. Pedestrians



What are the Benefits of Complete Streets?

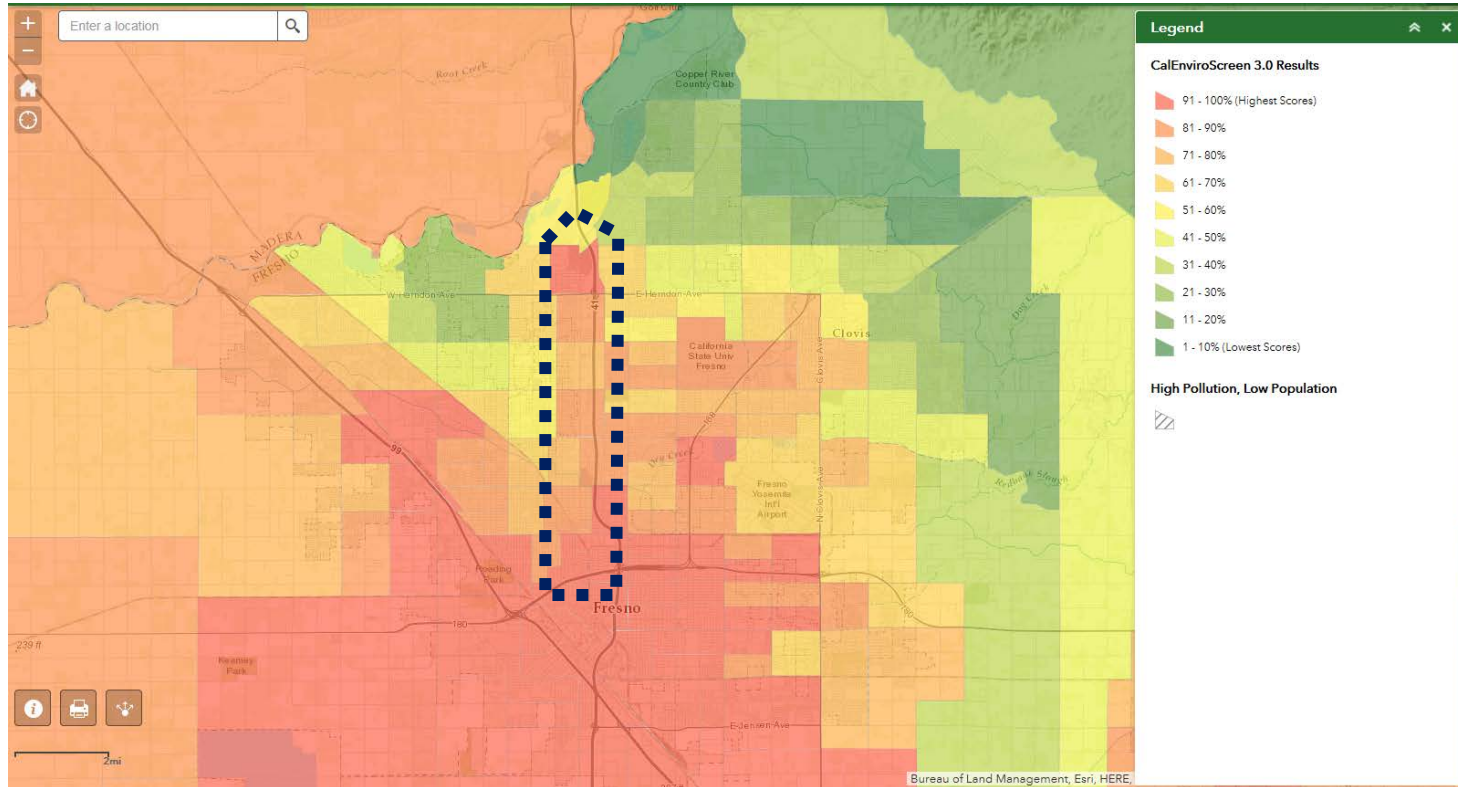
- **SAFETY:** well-designed bicycle tracks tends to reduce injury and crash risk. Available crosswalks prevent pedestrian fatalities.
- **ENVIRONMENT:** more walking, biking, transit riding = less air pollution and decrease in the obesity rate.
- **ECONOMIC:** redevelopment projects are spurred by complete streets.

CalEnviroScreen 3.0 – Statewide

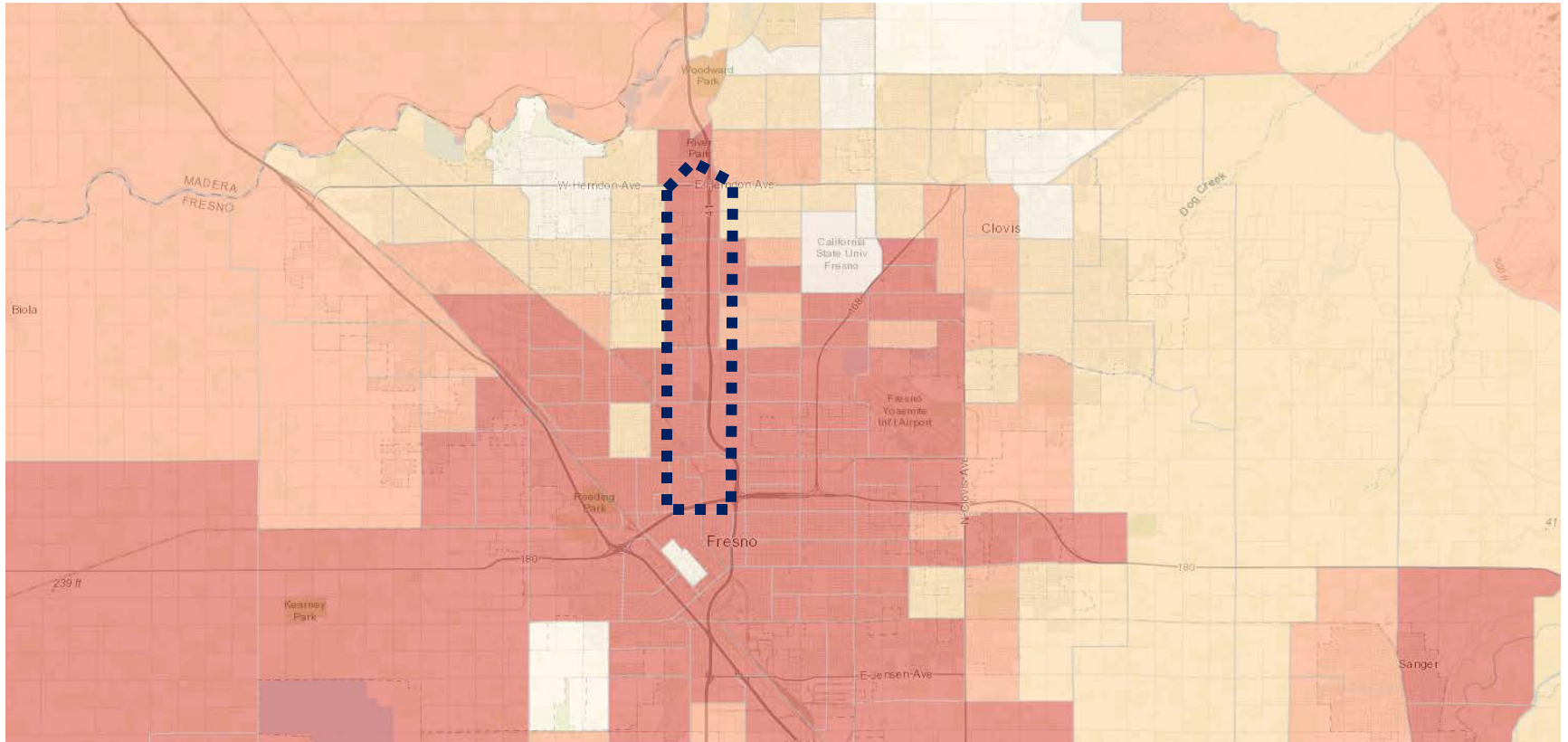


CalEnviroScreen 3.0

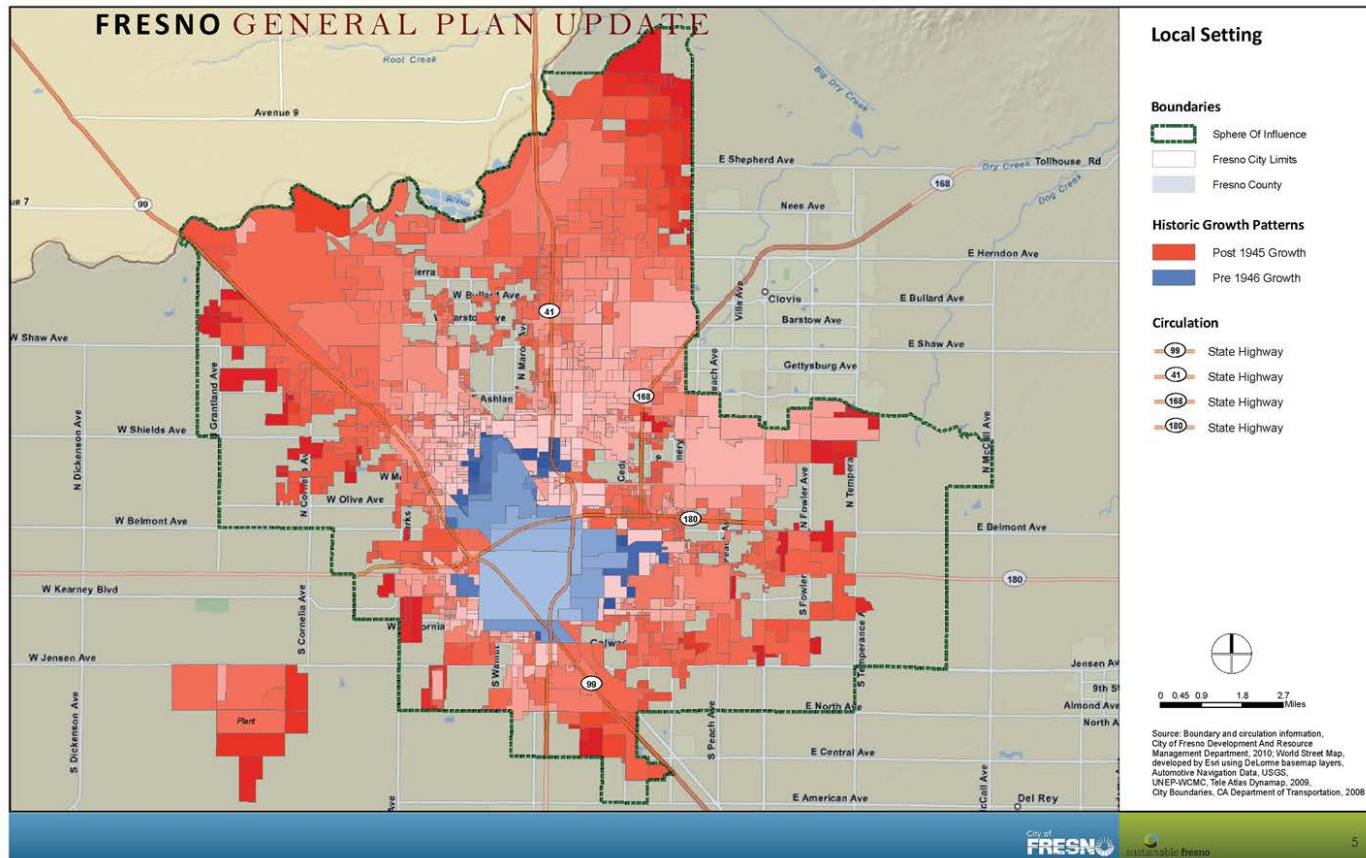
Better Blackstone Project Area



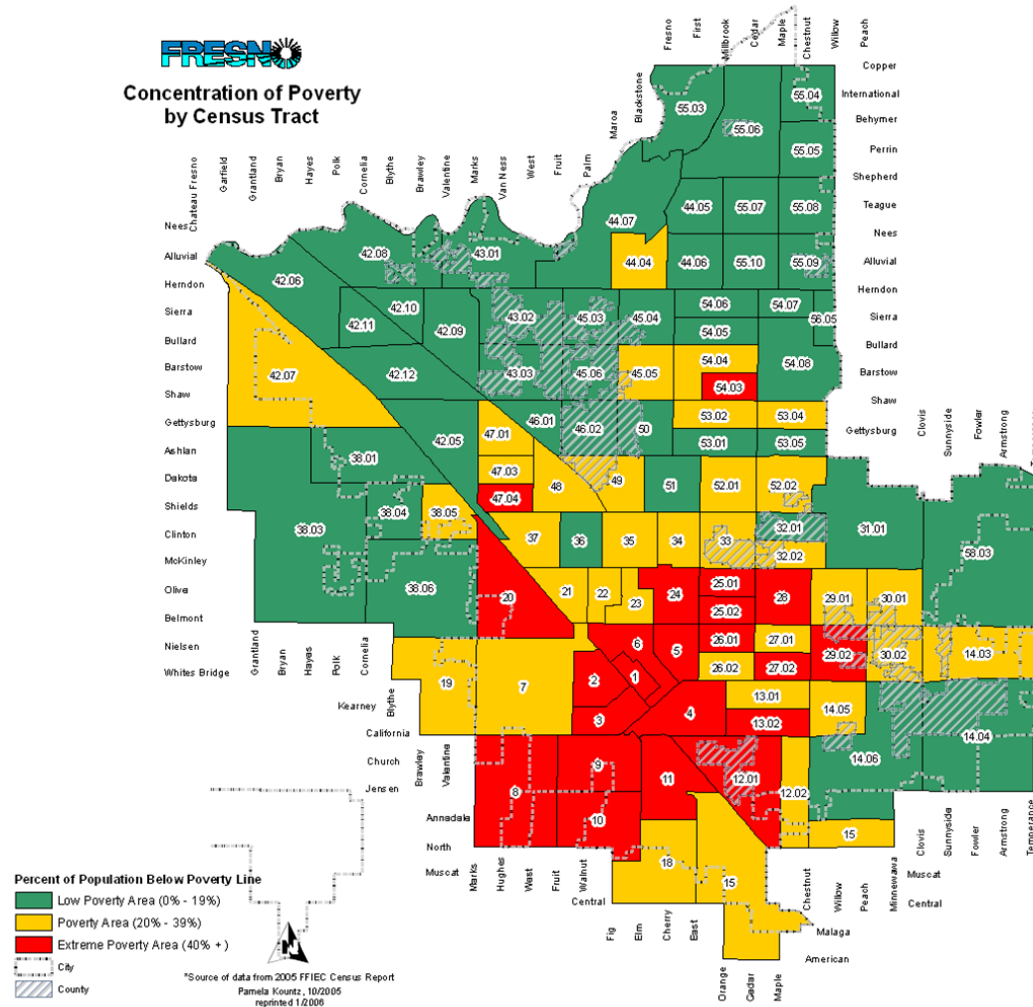
California Health Disadvantage Index 1.1– Better Blackstone Project Area

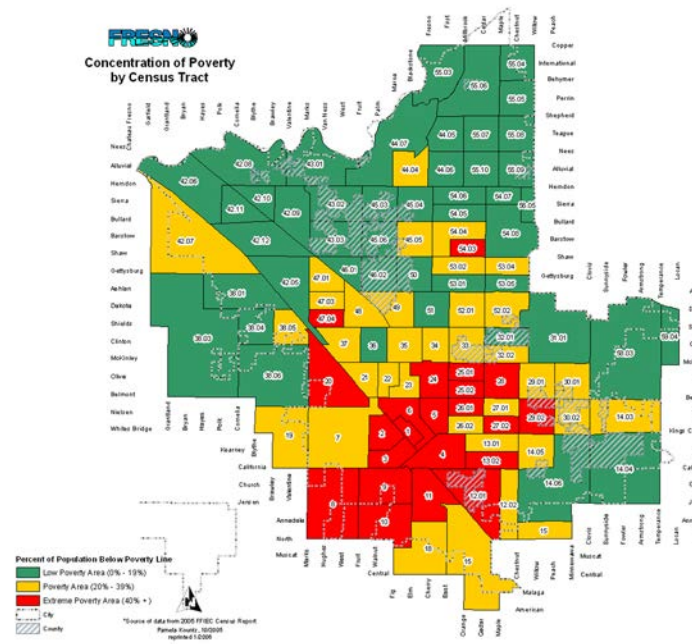
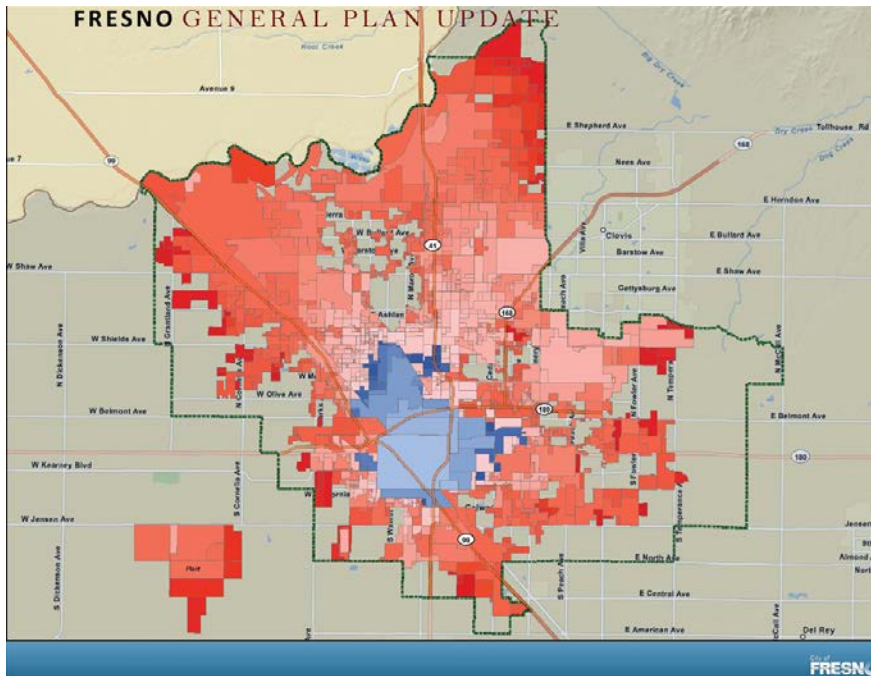


Historical Growth of Fresno



Concentration of Poverty by Census Tract











AUTO PARTS

Blackstone City
400

AUTO PARTS

Fabrics
• Furniture
• Blinds

GW school supply inc.

TRADER JOE'S

TUESDAY MORNING

Allard's
Art Supplies • Fine Pens • Framing

BUS
621-RIDE

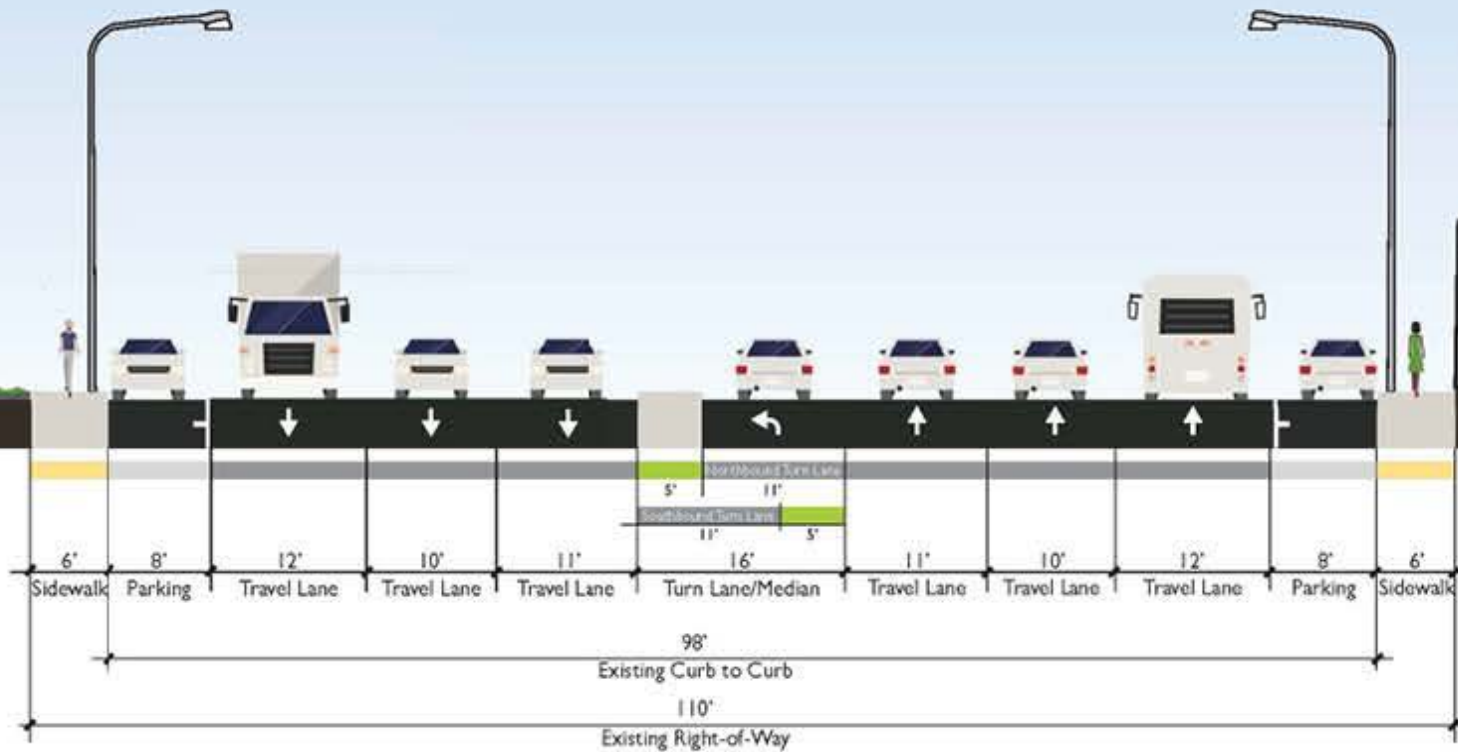
30

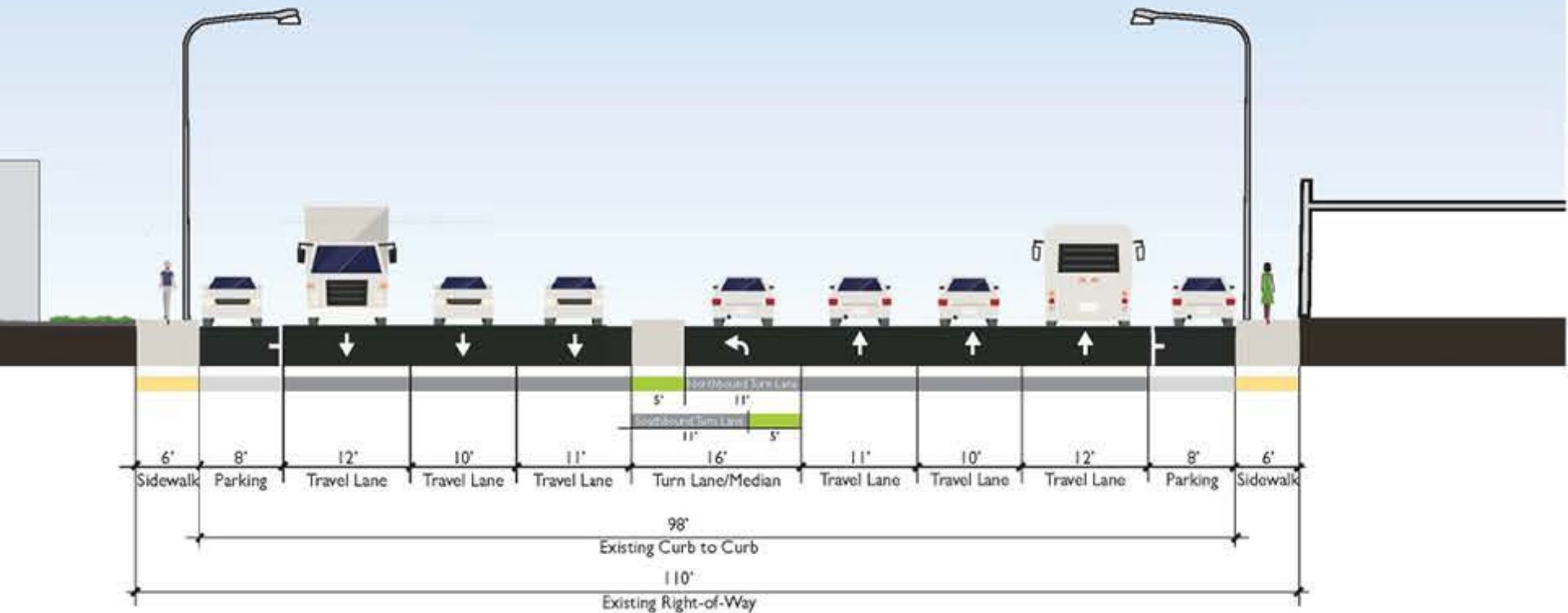
Orchard
SUPPLY HARDWARE

chevron

ShoeSource







So, what is the City doing to improve
Blackstone Avenue?

City of Fresno General Plan Land Use and Circulation Map



Garfield
Grantland
Bryan
Hayes
Polk
Cornelia
Byrne
Brawley
Valentine
Marks
Van Ness
West
Fruit
Palm
Maroa
Blackstone
Fresno
First
Millbrook
Cedar
Maple
Chestnut
Willow
Copper
International
Behrmer
Perrin
Shepherd
Teague
Nees
Alhambra
Herndon
Sierra
Bullard
Barstow
Shaw
Gettysburg
Ashlan
Dakota
Shields
Clinton
McKinley
Olive
Belmont
Nielsen
Whites Bridge



Grantland
Bryan
Hayes
Polk
Cornelia
Kearney
Byrne
Church
Jensen
Annadale
North
Marks
Hughes
West
Fruit
Walnut
Central
Fig
Elm
Cherry
East
Orange
Cedar
Maple
American
Chestnut
Willow
Peach
Minneville
Clovis
Sunnyside
Fowler
Armstrong
Temperance
Locan
De Wolf
Leonard
Highland
Thompson
McCall

LEGEND

RESIDENTIAL

- Low Density (1-3.5 D U./acre)
- Medium Low Density (3.5-6 D U./acre)
- Medium Density (6-12 D U./acre)
- Medium High Density (12-16 D U./acre)
- Urban Neighborhood (16-30 D U./acre)
- High Density (30-45 D U./acre)

COMMERCIAL

- Main Street
- Community
- Recreation
- General
- Highway & Auto
- Regional

EMPLOYMENT

- Office
- Business Park
- Regional Business Park
- Light Industrial
- Heavy Industrial

MIXED USE

- Neighborhood Mixed Use
- Corridor/Center Mixed Use
- Regional Mixed Use

DOWNTOWN

- Downtown Core
- Downtown General
- Downtown Neighborhood

OPEN SPACE

- Clear Zone
- Commercial-Recreational
- Community Park
- Flood Control Project
- Golf Course
- Lake, Pond
- Multi-Use
- Neighborhood Park
- Outdoor Environmental Education Area
- Open Space
- Ponding Basin
- Ponding Basin (Park use)
- Regional Park

PUBLIC FACILITIES

- Public/Quasi-public Facility
- Special School
- Elementary School
- Elementary & Middle School
- Elementary, Middle & High School
- Middle School
- High School
- College
- School with Park
- Airport
- Cemetery
- Church
- Community Activity Center
- Convalescent Hospital
- Fairgrounds
- Fire Station
- Government Offices
- Hospital
- Medical Center
- Neighborhood Center
- PG & E Substation
- Police Dressing Station
- Water Recharge Basin
- Waste Water Treatment Facility

BOUNDARIES

- Southeast Development Area (SEDA)
- Fresno Sphere of Influence
- Fresno Planning Boundary

Resolution Number	Date	Resolution Number	Date
2014-008	10 Nov 14	2017-006	26 Nov 17
2014-017	10 Nov 14	2017-007	26 Nov 17
2015-001	17 Nov 15	2017-008	26 Nov 17
2015-002	17 Nov 15	2017-009	26 Nov 17
2015-003	17 Nov 15	2017-010	26 Nov 17
2015-004	17 Nov 15	2017-011	26 Nov 17
2015-005	17 Nov 15	2017-012	26 Nov 17
2015-006	17 Nov 15	2017-013	26 Nov 17
2015-007	17 Nov 15	2017-014	26 Nov 17
2015-008	17 Nov 15	2017-015	26 Nov 17
2015-009	17 Nov 15	2017-016	26 Nov 17
2015-010	17 Nov 15	2017-017	26 Nov 17
2015-011	17 Nov 15	2017-018	26 Nov 17
2015-012	17 Nov 15	2017-019	26 Nov 17
2015-013	17 Nov 15	2017-020	26 Nov 17
2015-014	17 Nov 15	2017-021	26 Nov 17
2015-015	17 Nov 15	2017-022	26 Nov 17
2015-016	17 Nov 15	2017-023	26 Nov 17
2015-017	17 Nov 15	2017-024	26 Nov 17
2015-018	17 Nov 15	2017-025	26 Nov 17
2015-019	17 Nov 15	2017-026	26 Nov 17
2015-020	17 Nov 15	2017-027	26 Nov 17
2015-021	17 Nov 15	2017-028	26 Nov 17
2015-022	17 Nov 15	2017-029	26 Nov 17
2015-023	17 Nov 15	2017-030	26 Nov 17
2015-024	17 Nov 15	2017-031	26 Nov 17
2015-025	17 Nov 15	2017-032	26 Nov 17
2015-026	17 Nov 15	2017-033	26 Nov 17
2015-027	17 Nov 15	2017-034	26 Nov 17
2015-028	17 Nov 15	2017-035	26 Nov 17
2015-029	17 Nov 15	2017-036	26 Nov 17
2015-030	17 Nov 15	2017-037	26 Nov 17
2015-031	17 Nov 15	2017-038	26 Nov 17
2015-032	17 Nov 15	2017-039	26 Nov 17
2015-033	17 Nov 15	2017-040	26 Nov 17
2015-034	17 Nov 15	2017-041	26 Nov 17
2015-035	17 Nov 15	2017-042	26 Nov 17
2015-036	17 Nov 15	2017-043	26 Nov 17
2015-037	17 Nov 15	2017-044	26 Nov 17
2015-038	17 Nov 15	2017-045	26 Nov 17
2015-039	17 Nov 15	2017-046	26 Nov 17
2015-040	17 Nov 15	2017-047	26 Nov 17
2015-041	17 Nov 15	2017-048	26 Nov 17
2015-042	17 Nov 15	2017-049	26 Nov 17
2015-043	17 Nov 15	2017-050	26 Nov 17
2015-044	17 Nov 15	2017-051	26 Nov 17
2015-045	17 Nov 15	2017-052	26 Nov 17
2015-046	17 Nov 15	2017-053	26 Nov 17
2015-047	17 Nov 15	2017-054	26 Nov 17
2015-048	17 Nov 15	2017-055	26 Nov 17
2015-049	17 Nov 15	2017-056	26 Nov 17
2015-050	17 Nov 15	2017-057	26 Nov 17
2015-051	17 Nov 15	2017-058	26 Nov 17
2015-052	17 Nov 15	2017-059	26 Nov 17
2015-053	17 Nov 15	2017-060	26 Nov 17
2015-054	17 Nov 15	2017-061	26 Nov 17
2015-055	17 Nov 15	2017-062	26 Nov 17
2015-056	17 Nov 15	2017-063	26 Nov 17
2015-057	17 Nov 15	2017-064	26 Nov 17
2015-058	17 Nov 15	2017-065	26 Nov 17
2015-059	17 Nov 15	2017-066	26 Nov 17
2015-060	17 Nov 15	2017-067	26 Nov 17
2015-061	17 Nov 15	2017-068	26 Nov 17
2015-062	17 Nov 15	2017-069	26 Nov 17
2015-063	17 Nov 15	2017-070	26 Nov 17
2015-064	17 Nov 15	2017-071	26 Nov 17
2015-065	17 Nov 15	2017-072	26 Nov 17
2015-066	17 Nov 15	2017-073	26 Nov 17
2015-067	17 Nov 15	2017-074	26 Nov 17
2015-068	17 Nov 15	2017-075	26 Nov 17
2015-069	17 Nov 15	2017-076	26 Nov 17
2015-070	17 Nov 15	2017-077	26 Nov 17
2015-071	17 Nov 15	2017-078	26 Nov 17
2015-072	17 Nov 15	2017-079	26 Nov 17
2015-073	17 Nov 15	2017-080	26 Nov 17
2015-074	17 Nov 15	2017-081	26 Nov 17
2015-075	17 Nov 15	2017-082	26 Nov 17
2015-076	17 Nov 15	2017-083	26 Nov 17
2015-077	17 Nov 15	2017-084	26 Nov 17
2015-078	17 Nov 15	2017-085	26 Nov 17
2015-079	17 Nov 15	2017-086	26 Nov 17
2015-080	17 Nov 15	2017-087	26 Nov 17
2015-081	17 Nov 15	2017-088	26 Nov 17
2015-082	17 Nov 15	2017-089	26 Nov 17
2015-083	17 Nov 15	2017-090	26 Nov 17
2015-084	17 Nov 15	2017-091	26 Nov 17
2015-085	17 Nov 15	2017-092	26 Nov 17
2015-086	17 Nov 15	2017-093	26 Nov 17
2015-087	17 Nov 15	2017-094	26 Nov 17
2015-088	17 Nov 15	2017-095	26 Nov 17
2015-089	17 Nov 15	2017-096	26 Nov 17
2015-090	17 Nov 15	2017-097	26 Nov 17
2015-091	17 Nov 15	2017-098	26 Nov 17
2015-092	17 Nov 15	2017-099	26 Nov 17
2015-093	17 Nov 15	2017-100	26 Nov 17
2015-094	17 Nov 15	2017-101	26 Nov 17
2015-095	17 Nov 15	2017-102	26 Nov 17
2015-096	17 Nov 15	2017-103	26 Nov 17
2015-097	17 Nov 15	2017-104	26 Nov 17
2015-098	17 Nov 15	2017-105	26 Nov 17
2015-099	17 Nov 15	2017-106	26 Nov 17
2015-100	17 Nov 15	2017-107	26 Nov 17
2015-101	17 Nov 15	2017-108	26 Nov 17
2015-102	17 Nov 15	2017-109	26 Nov 17
2015-103	17 Nov 15	2017-110	26 Nov 17
2015-104	17 Nov 15	2017-111	26 Nov 17
2015-105	17 Nov 15	2017-112	26 Nov 17
2015-106	17 Nov 15	2017-113	26 Nov 17
2015-107	17 Nov 15	2017-114	26 Nov 17
2015-108	17 Nov 15	2017-115	26 Nov 17
2015-109	17 Nov 15	2017-116	26 Nov 17
2015-110	17 Nov 15	2017-117	26 Nov 17
2015-111	17 Nov 15	2017-118	26 Nov 17
2015-112	17 Nov 15	2017-119	26 Nov 17
2015-113	17 Nov 15	2017-120	26 Nov 17
2015-114	17 Nov 15	2017-121	26 Nov 17
2015-115	17 Nov 15	2017-122	26 Nov 17
2015-116	17 Nov 15	2017-123	26 Nov 17
2015-117	17 Nov 15	2017-124	26 Nov 17
2015-118	17 Nov 15	2017-125	26 Nov 17
2015-119	17 Nov 15	2017-126	26 Nov 17
2015-120	17 Nov 15	2017-127	26 Nov 17
2015-121	17 Nov 15	2017-128	26 Nov 17
2015-122	17 Nov 15	2017-129	26 Nov 17
2015-123	17 Nov 15	2017-130	26 Nov 17
2015-124	17 Nov 15	2017-131	26 Nov 17
2015-125	17 Nov 15	2017-132	26 Nov 17
2015-126	17 Nov 15	2017-133	26 Nov 17
2015-127	17 Nov 15	2017-134	26 Nov 17
2015-128	17 Nov 15	2017-135	26 Nov 17
2015-129	17 Nov 15	2017-136	26 Nov 17
2015-130	17 Nov 15	2017-137	26 Nov 17
2015-131	17 Nov 15	2017-138	26 Nov 17
2015-132	17 Nov 15	2017-139	26 Nov 17
2015-133	17 Nov 15	2017-140	26 Nov 17
2015-134	17 Nov 15	2017-141	26 Nov 17
2015-135	17 Nov 15	2017-142	26 Nov 17
2015-136	17 Nov 15	2017-143	26 Nov 17
2015-137	17 Nov 15	2017-144	26 Nov 17
2015-138	17 Nov 15	2017-145	26 Nov 17
2015-139	17 Nov 15	2017-146	26 Nov 17
2015-140	17 Nov 15	2017-147	26 Nov 17
2015-141	17 Nov 15	2017-148	26 Nov 17
2015-142	17 Nov 15	2017-149	26 Nov 17
2015-143	17 Nov 15	2017-150	26 Nov 17
2015-144	17 Nov 15	2017-151	26 Nov 17
2015-145	17 Nov 15	2017-152	26 Nov 17
2015-146	17 Nov 15	2017-153	26 Nov 17
2015-147	17 Nov 15	2017-154	26 Nov 17
2015-148	17 Nov 15	2017-155	26 Nov 17
2015-149	17 Nov 15	2017-156	26 Nov 17
2015-150	17 Nov 15	2017-157	26 Nov 17
2015-151	17 Nov 15	2017-158	26 Nov 17
2015-152	17 Nov 15	2017-159	26 Nov 17
2015-153	17 Nov 15	2017-160	26 Nov 17
2015-154	17 Nov 15	2017-161	26 Nov 17
2015-155	17 Nov 15	2017-162	26 Nov 17
2015-156	17 Nov 15	2017-163	26 Nov 17
2015-157	17 Nov 15	2017-164	26 Nov 17
2015-158	17 Nov 15	2017-165	26 Nov 17
2015-159	17 Nov 15	2017-166	26 Nov 17
2015-160	17 Nov 15	2017-167	26 Nov 17
2015-161	17 Nov 15	2017-168	26 Nov 17
2015-162	17 Nov 15	2017-169	26 Nov 17
2015-163	17 Nov 15	2017-170	26 Nov 17
2015-164	17 Nov 15	2017-171	26 Nov 17
2015-165	17 Nov 15	2017-172	26 Nov 17
2015-166	17 Nov 15	2017-173	26 Nov 17
2015-167	17 Nov 15	2017-174	26 Nov 17
2015-168	17 Nov 15	2017-175	26 Nov 17
2015-169	17 Nov 15	2017-176	26 Nov 17
2015-170	17 Nov 15	2017-177	26 Nov 17
2015-171	17 Nov 15	2017-178	26 Nov 17
2015-172	17 Nov 15	2017-179	26 Nov 17
2015-173	17 Nov 15	2017-180	26 Nov 17
2015-174	17 Nov 15	2017-181	26 Nov 17
2015-175	17 Nov 15	2017-182	26 Nov 17
2015-176	17 Nov 15	2017-183	26 Nov 17
2015-177	17 Nov 15	2017-184	26 Nov 17
2015-178	17 Nov 15	2017-185	26 Nov 17
2015-179	17 Nov 15	2017-186	26 Nov 17
2015-180	17 Nov 15	2017-187	26 Nov 17
2015-181	17 Nov 15	2017-188	26 Nov 17
2015-182	17 Nov 15	2017-189	26 Nov 17
2015-183	17 Nov 15	2017-190	26 Nov 17
2015-184	17 Nov 15	2017-191	26 Nov 17
2015-185	17 Nov 15	2017-192	26 Nov 17
2015-186	17 Nov 15	2017-193	26 Nov 17
2015-187	17 Nov 15	2017-194	26 Nov 17
2015-188	17 Nov 15	2017-195	26 Nov 17
2015-189	17 Nov 15	2017-196	26 Nov 17
2015-190	17 Nov 15	2017-197	26 Nov 17
2015-191	17 Nov 15	2017-198	26 Nov 17</

What Have We Done, So Far?

- A. Contracted with Community Design + Architecture, Inc. in April 2018 as the consultants on this project
- B. Outreached to the community
- C. Developed conceptual designs based on community input
- D. Drafted and released the report

Community Outreach

- 8,300 flyers were distributed for community meetings, design workshops, and input sessions
- 15 neighborhoods were canvassed
- 1,700 doors were knocked on
- 1,400 reminder calls were placed to residences and businesses
- E-News distributions reaching 2,000 people (3x)
- 2-day multiday charrette
- 1 workshop, 3 open houses
- Several listening sessions with key stakeholders



SOUTHERN BLACKSTONE AVENUE SMART MOBILITY STRATEGY

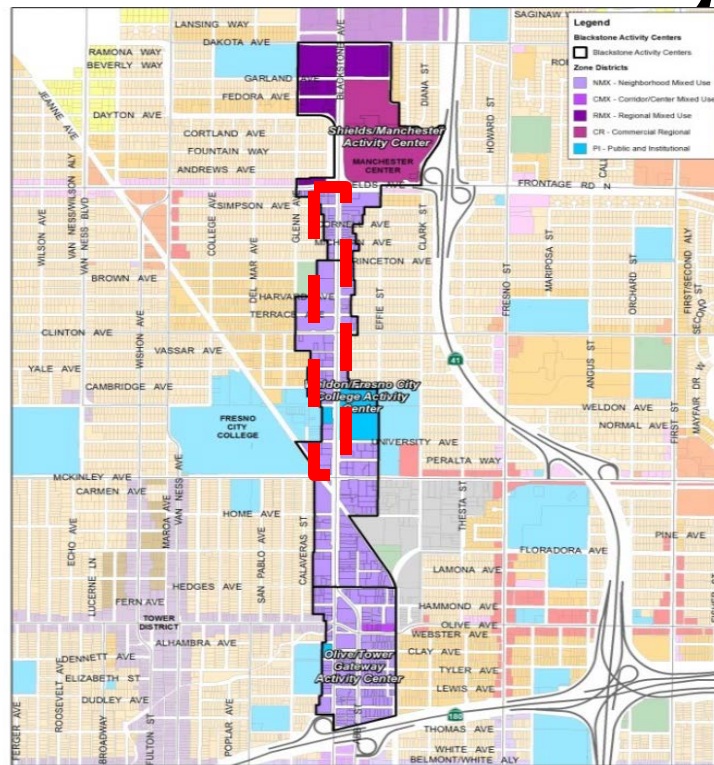


CORE RECOMMENDATIONS

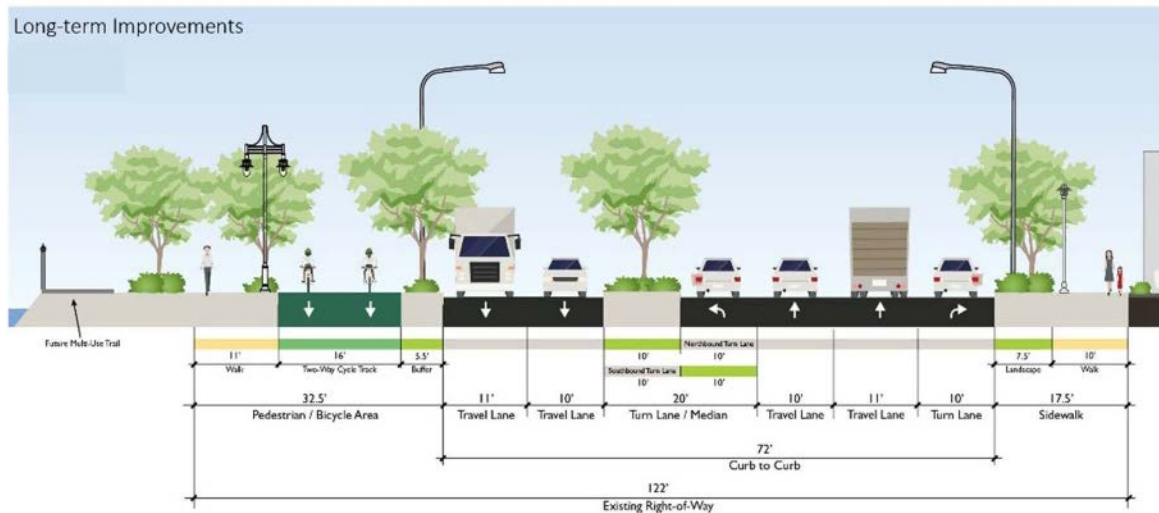
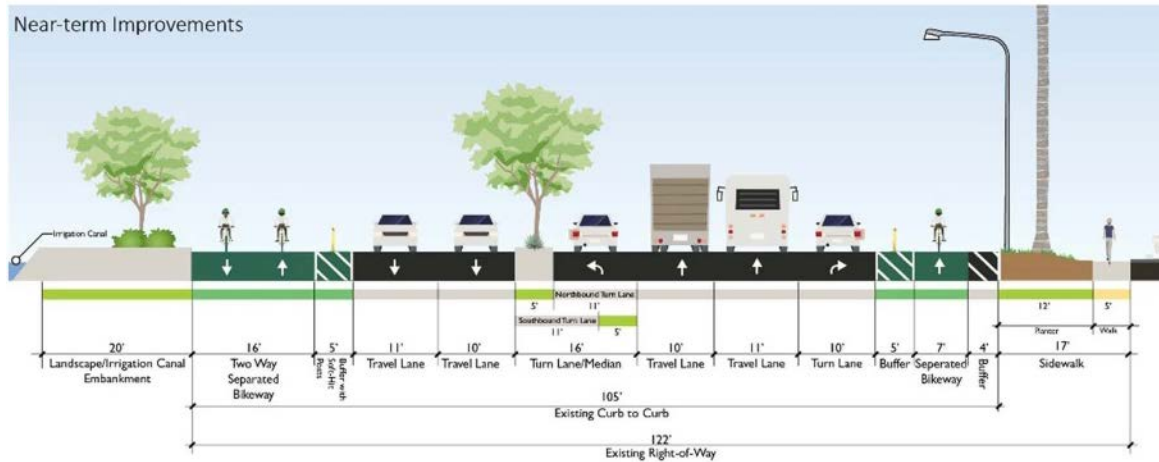


Pilot Project to Evaluate Recommended Improvements

Shields to McKinley 1-Mile

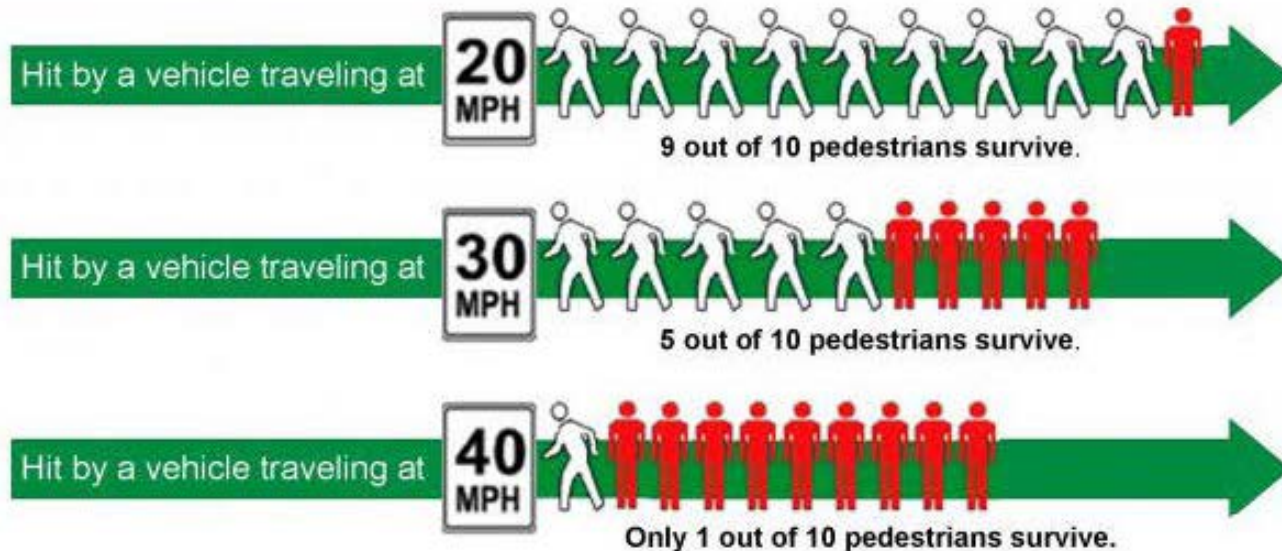


Rebalance space within the public right-of-way to accommodate pedestrians and bicyclists



Speed Management

Further study the reduction of the posted speed limit along the corridor



Increase Frequency of Crossings & Pedestrian and Bicycle-friendly Intersection Improvements

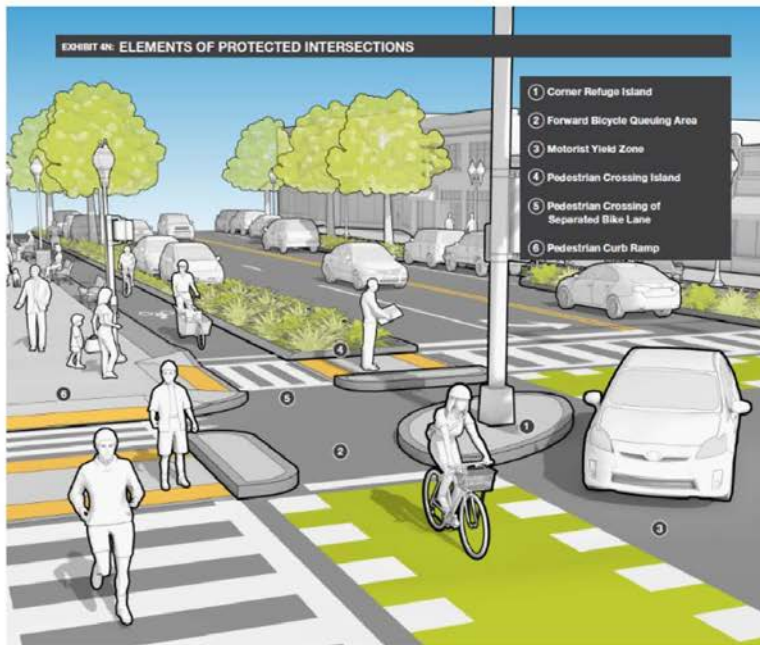


Fig 3.12: Protected Intersection Diagram (Source: Separated Bike Lane Planning & Design Guide)



Fig 3.13: Example of soft-hit posts as curb-extensions, median-refuges



Fig 3.14: Example of soft-hit posts as median-refuges (Source: Google Streetview)

Other Potential Improvements:

- 1. City already upgrading lighting**
- 2. Blackstone Avenue-branded banners and wayfinding signage**
- 3. Additional Street Trees along the corridor**



CAN BLACKSTONE BE A COMPLETE STREET?



YES, BIG STREETS CAN BE COMPLETE!

Same Number of (exist.) Travel Lanes + Separated Bikeway



Conversion of one Travel Lane to Dedicated Transit Lane + Separated Bikeway



Conversion of one Travel Lane to Widened Sidewalks + Raised Separated Bikeway



We Need You...



Open House Opportunities

Manchester Shopping Center, Room 208
Thursday, April 2, 2019
12:30 p.m. – 1:30 p.m.

Ted C. Wills
Thursday, April 3, 2019
5:30 p.m. – 7:00 p.m.

Public Meetings

Planning Commission
City Hall, Council Chambers
Wednesday, April 17, 2019
6:00 p.m.

City Council
City Hall, Council Chambers
May, 2, 2019
1:30 p.m.

"IN THE PRESENT CIRCUMSTANCES, NO ONE CAN AFFORD TO ASSUME THAT SOMEONE ELSE WILL SOLVE THEIR PROBLEMS. EACH ONE OF US HAS A RESPONSIBILITY TO HELP GUIDE OUR GLOBAL FAMILY IN THE RIGHT DIRECTION. GOOD WISHES ARE NOT SUFFICIENT; WE MUST BECOME ACTIVELY ENGAGED."

- DALAI LAMA

Rodney Horton, *Planner*
City of Fresno
DARM Department
559-621-8181
Rodney.horton@fresno.gov

