



SCANNELL
P R O P E R T I E S

A PRESENTATION FOR:



March 22, 2022

AGENDA

- Scannell Overview
- Who We Are
- Site Location
- Site Plan
- Building Elevations
- Renderings
- Why Scannell?
- Q&A



WHO WE ARE

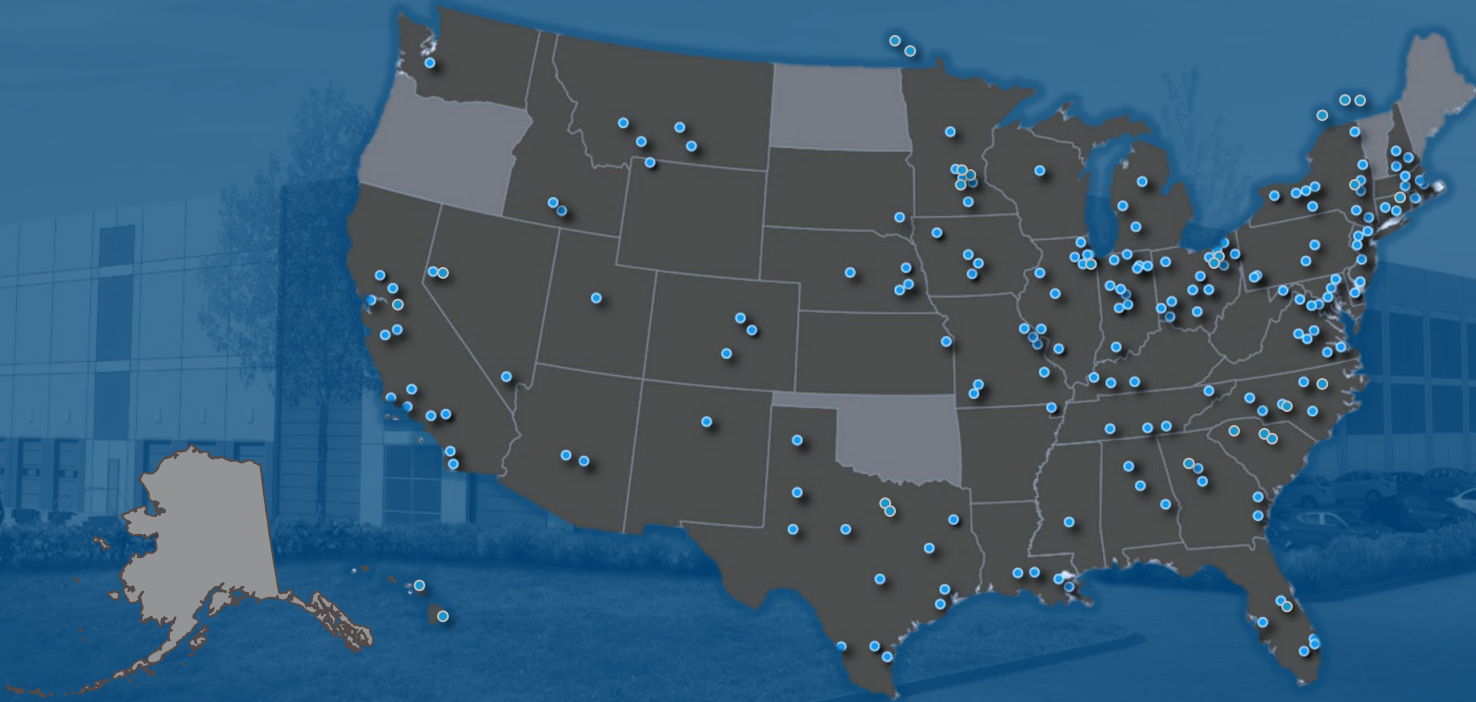


- Privately held real estate development and investment company
- HQ in Indianapolis, IN with 12 additional offices in USA & Europe
- 48 States and 3 Canadian Provinces, over 200 Million square feet
 - 20 Million square feet in 2020
 - 30 Million square feet in 2021
- Diverse High Image Corporate client base
 - Track record of guaranteed delivery on time and within budget
 - 70% repeat business
 - Business Park, Light Industrial, Manufacturing, Warehouse/Distribution, Cold Storage Experience
- Internal Resources
 - In-house A/E, Legal, Capital, Development, & Construction Management expedites processes, reduces cost, saves schedules, and improves decision making

300+ Projects

48 States, 3 Canadian Provinces

Over 200 Million SF



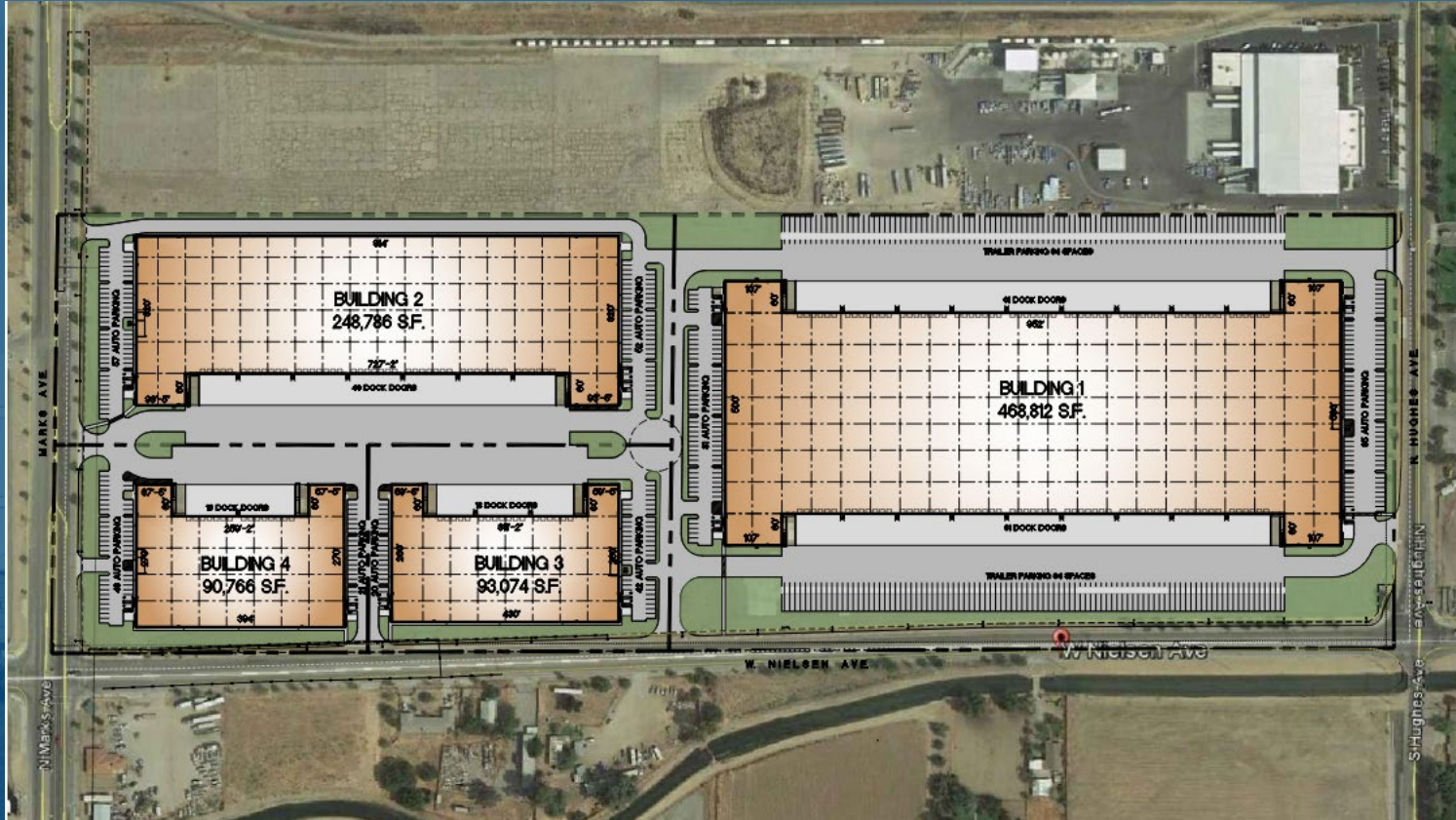
SPECULATIVE DEVELOPMENT



SITE LOCATION



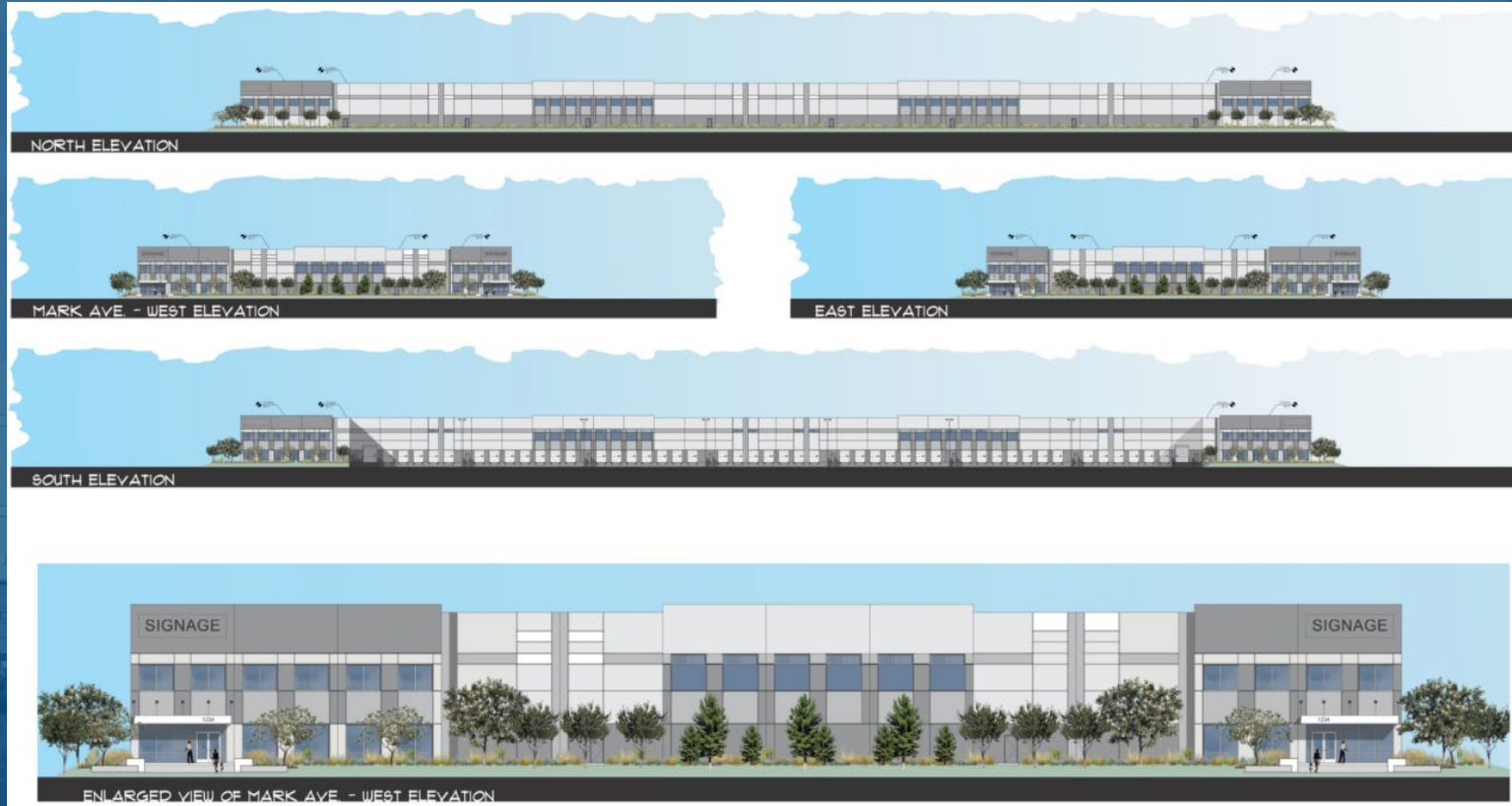
SCANNELL BUSINESS PARK



BUILDING #1 ELEVATION



BUILDING #2 ELEVATION



BUILDING #3 & #4 ELEVATION



BUILDING #2 RENDERING



BUILDING #2 RENDERING



WHY SCANNELL?



THE RIGHT PEOPLE

A seasoned team of industry experts that is committed to making this project a success. Internal resources to manage the construction, offering greater control and potential savings.



DEVELOPMENT EXPERIENCE

Developed over 30M SF in 2021 totaling in excess of \$5 billion in vertical development.



LOCAL EXPERIENCE

Our team is local and has experience developing projects throughout the State of California. We are one of the largest industrial developers in Nation which leads to better buying power and competitive pricing.



CAPITALIZATION

Financial capacity that allows us to fund developments of any size, type or location without reliance on third party equity sources, which ensures our ability to execute and deliver projects on time.

An architectural rendering of a modern commercial building, possibly a warehouse or big-box store, with a blue overlay. The building features a prominent corner entrance with large glass windows and a dark, flat roof. To the left, there are several large roll-up doors. A parking lot with several cars is visible in the foreground, and trees are scattered around the building. The sky is a clear, light blue.

Q & A