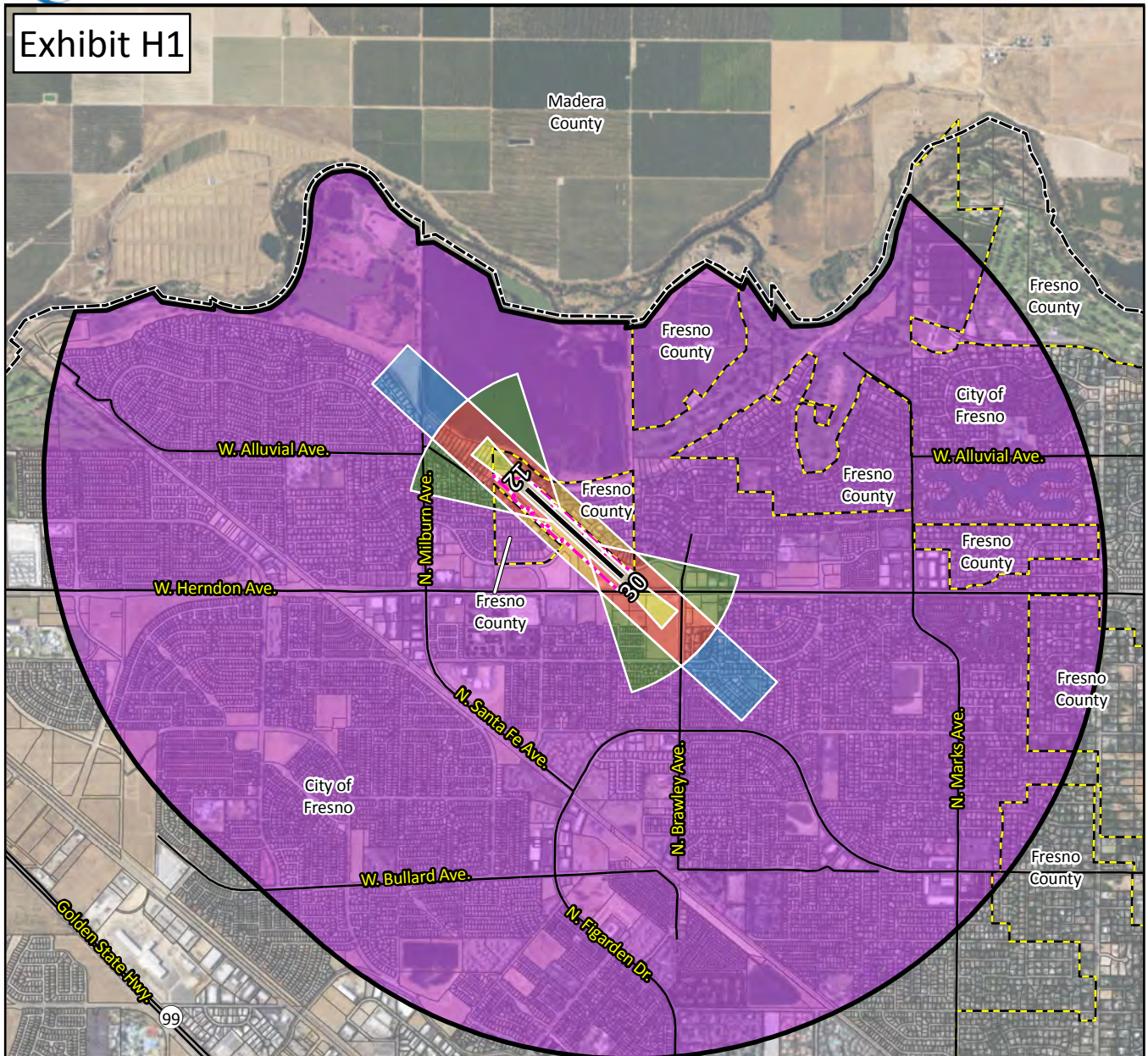




Exhibit H1

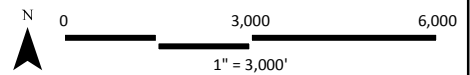


LEGEND

- Runway¹
- Airport Property²
- Parcel Boundary
- Municipal Boundary
- County Boundary
- Streets
- Airport Influence Area (AIA)³

Safety Zones³

- 1. Runway Protection Zone
- 2. Inner Approach/Departure Zone
- 3. Inner Turning Zone
- 4. Outer Approach/Departure Zone
- 5. Sideline Zone
- 6. Traffic Pattern Zone



¹FAA 5010 Master Record

²APN's: 50103102, 50103402, 50104202, 50105001, 50104702.

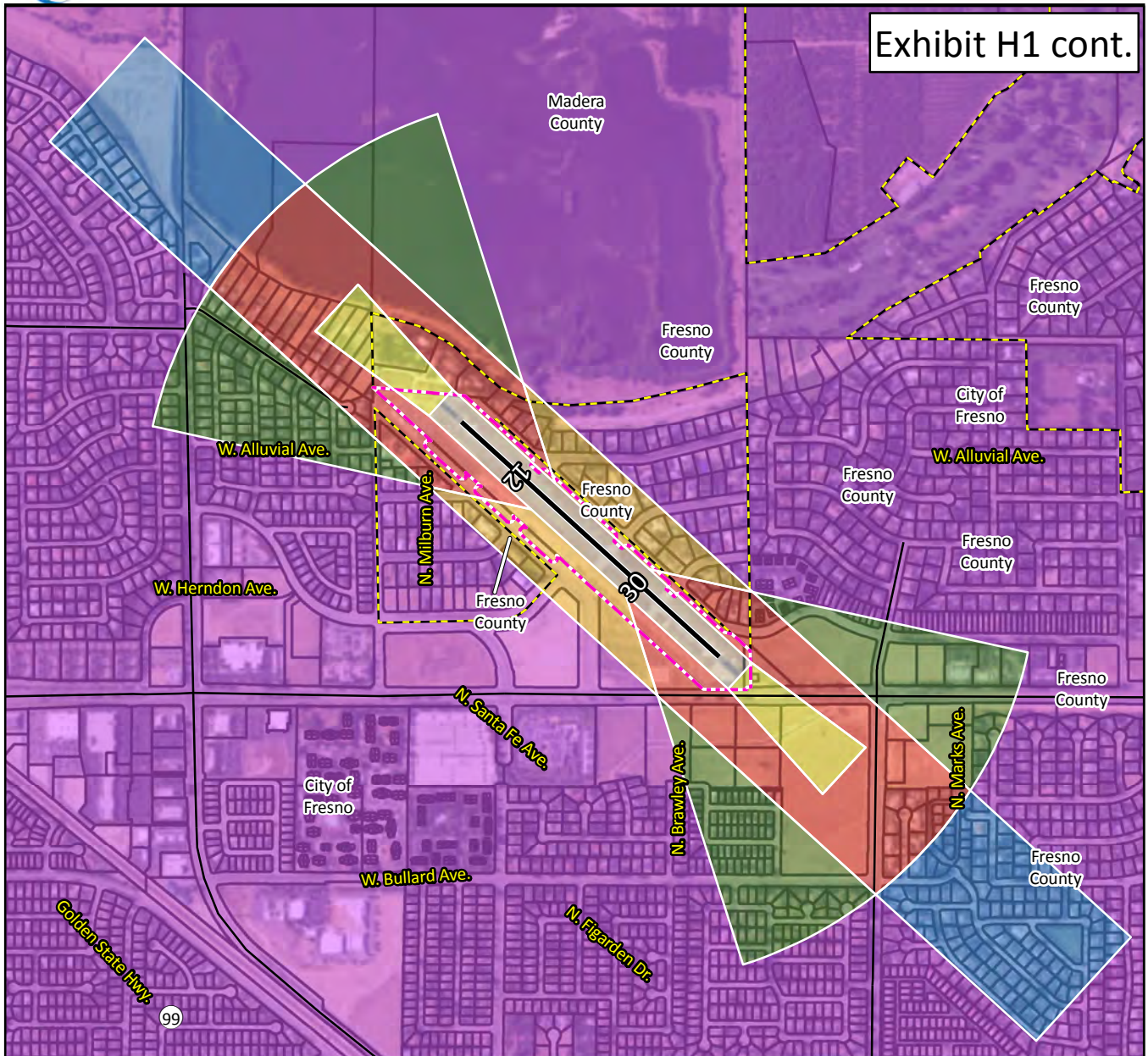
³Part 77 Conical Surface. See 14 CFR, Subchapter E, Part 77, §77.25.

⁴Figure 3A, California Airport Land Use Planning Handbook (2011), and Coffman Associates Analysis.

Sources: Fresno County Parcels, Fresno County Streets, ESRI Basemap Imagery (2016).



Exhibit H1 cont.

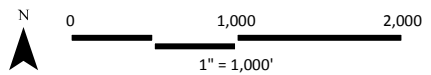


LEGEND

- Runway¹
- Airport Property²
- Parcel Boundary
- Municipal Boundary
- County Boundary
- Streets

Safety Zones³

- 1. Runway Protection Zone
- 2. Inner Approach/Departure Zone
- 3. Inner Turning Zone
- 4. Outer Approach/Departure Zone
- 5. Sideline Zone
- 6. Traffic Pattern Zone



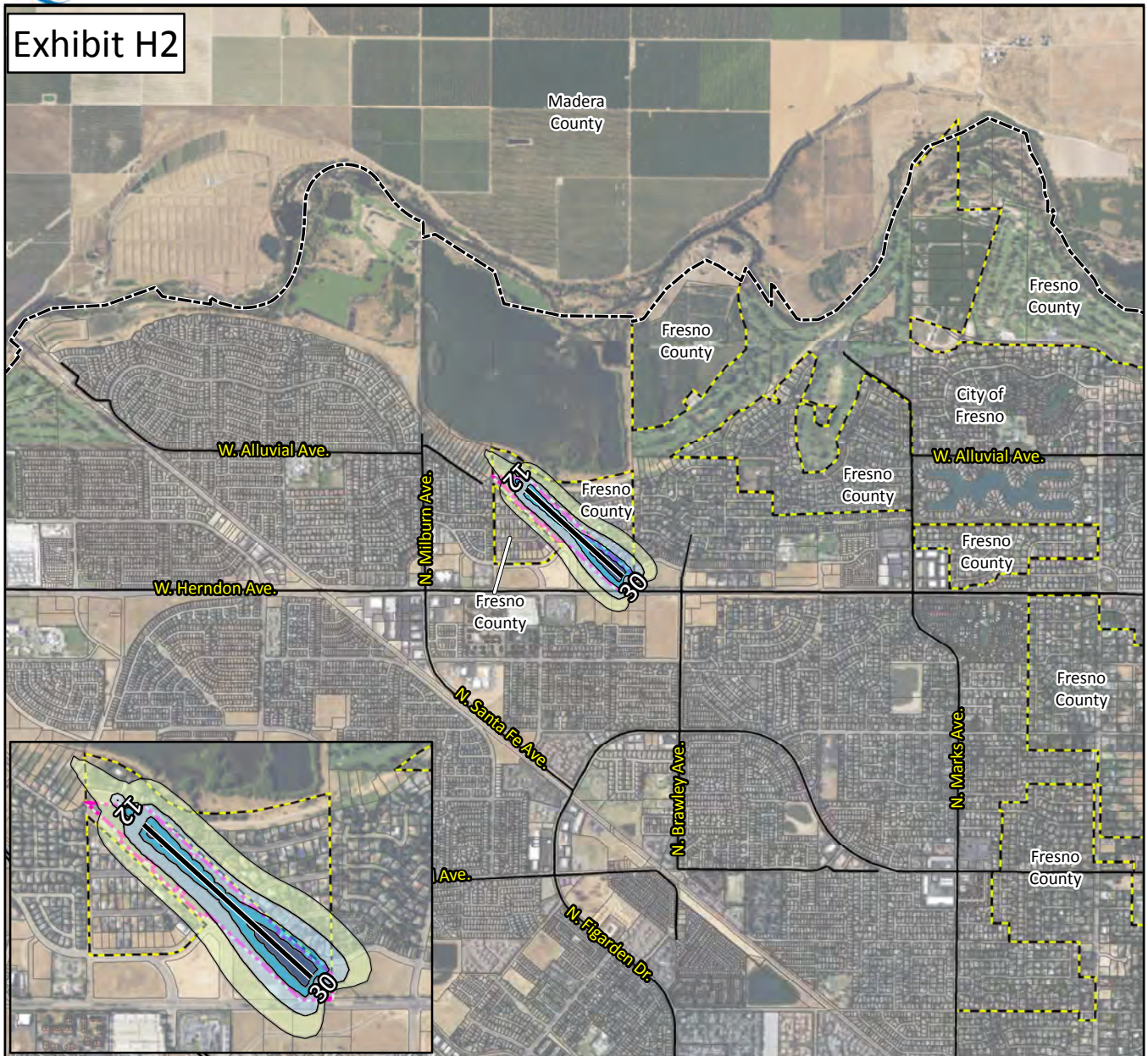
¹FAA 5010 Master Record

²APN's: 50103102, 50103402, 50104202, 50105001, 50104702.

³Figure 3A, California Airport Land Use Planning Handbook (2011), and Coffman Associates Analysis. Sources: Fresno County Parcels, Fresno County Streets, ESRI Basemap Imagery (2016).



Exhibit H2

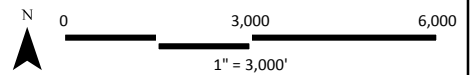


LEGEND

- Runway¹
- Airport Property²
- Parcel Boundary
- Municipal Boundary
- County Boundary
- Streets

Future Noise Contours

- 60 CNEL
- 65 CNEL
- 70 CNEL
- 75 CNEL



¹FAA 5010 Master Record.

²APN's: 50103102, 50103402, 50104202, 50105001, 50104702.

³Community Noise Equivalent Level - Coffman Associates analysis.

Sources: Fresno County Parcels, Fresno County Streets, ESRI Basemap Imagery (2016).



Exhibit H2 cont.

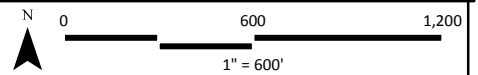


LEGEND

- Runway¹
- Airport Property²
- Parcel Boundary
- Municipal Boundary
- Streets

Future Noise Contours

- 60 CNEL
- 65 CNEL
- 70 CNEL
- 75 CNEL



¹FAA 5010 Master Record.

²APN's: 50103102, 50103402, 50104202, 50105001, 50104702.

³Community Noise Equivalent Level - Coffman Associates analysis.

Sources: Fresno County Parcels, Fresno County Streets, ESRI Basemap Imagery (2016).