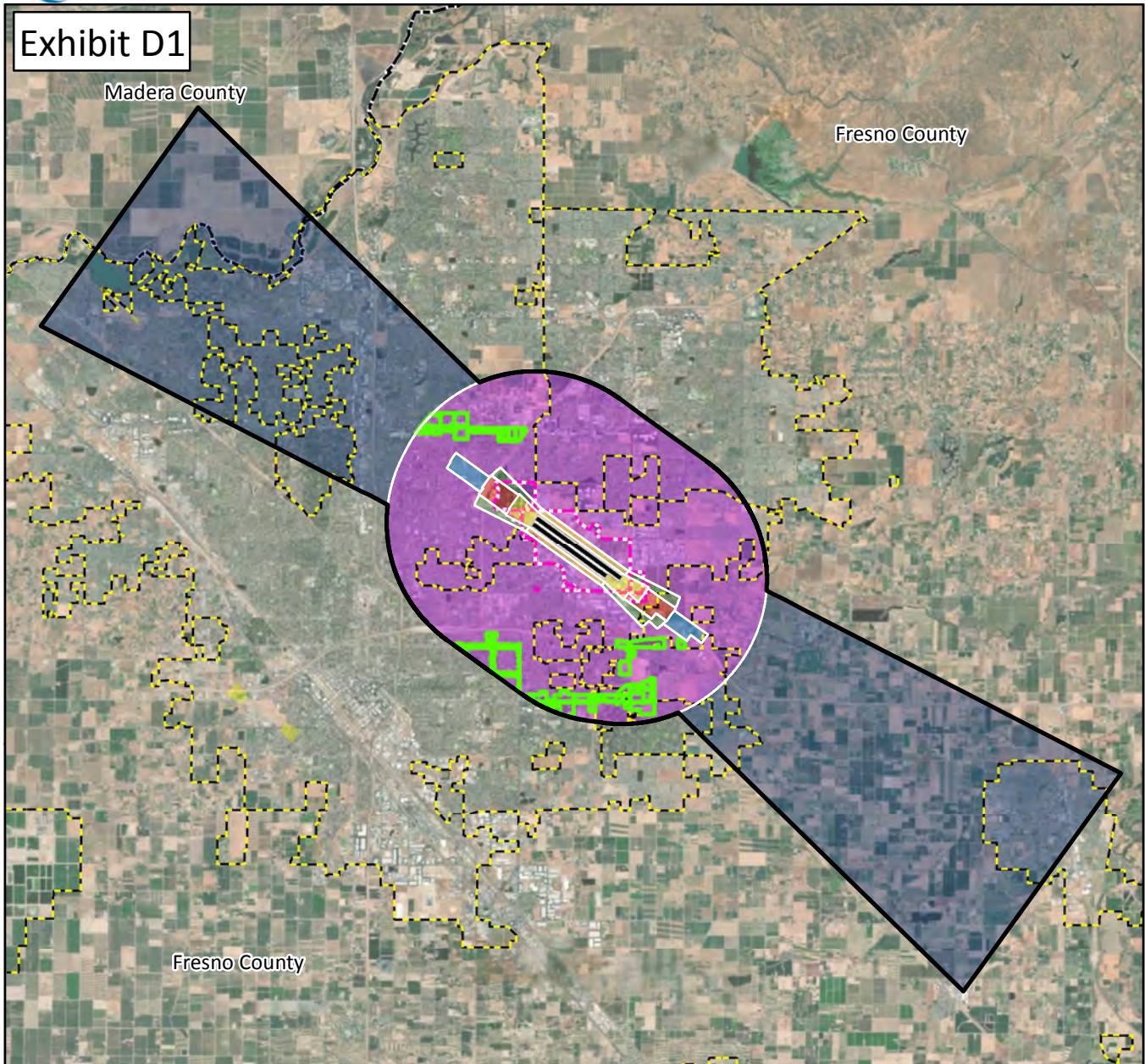




Exhibit D1

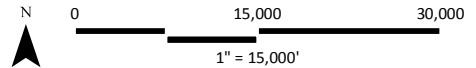


LEGEND

- Existing Runway¹
- Ultimate Runway¹
- Airport Property¹
- Municipal Boundary
- Airport Influence Area (AIA)²
- Urban³

Safety Zones⁴

- 1. Runway Protection Zone
- 2. Inner Approach/Departure Zone
- 3. Inner Turning Zone
- 4. Outer Approach/Departure Zone
- 5. Sideline Zone
- 6. Traffic Pattern Zone
- 7. Precision Approach Zone



¹FresnoYosemite Intl. Airport Layout Plan (2013)

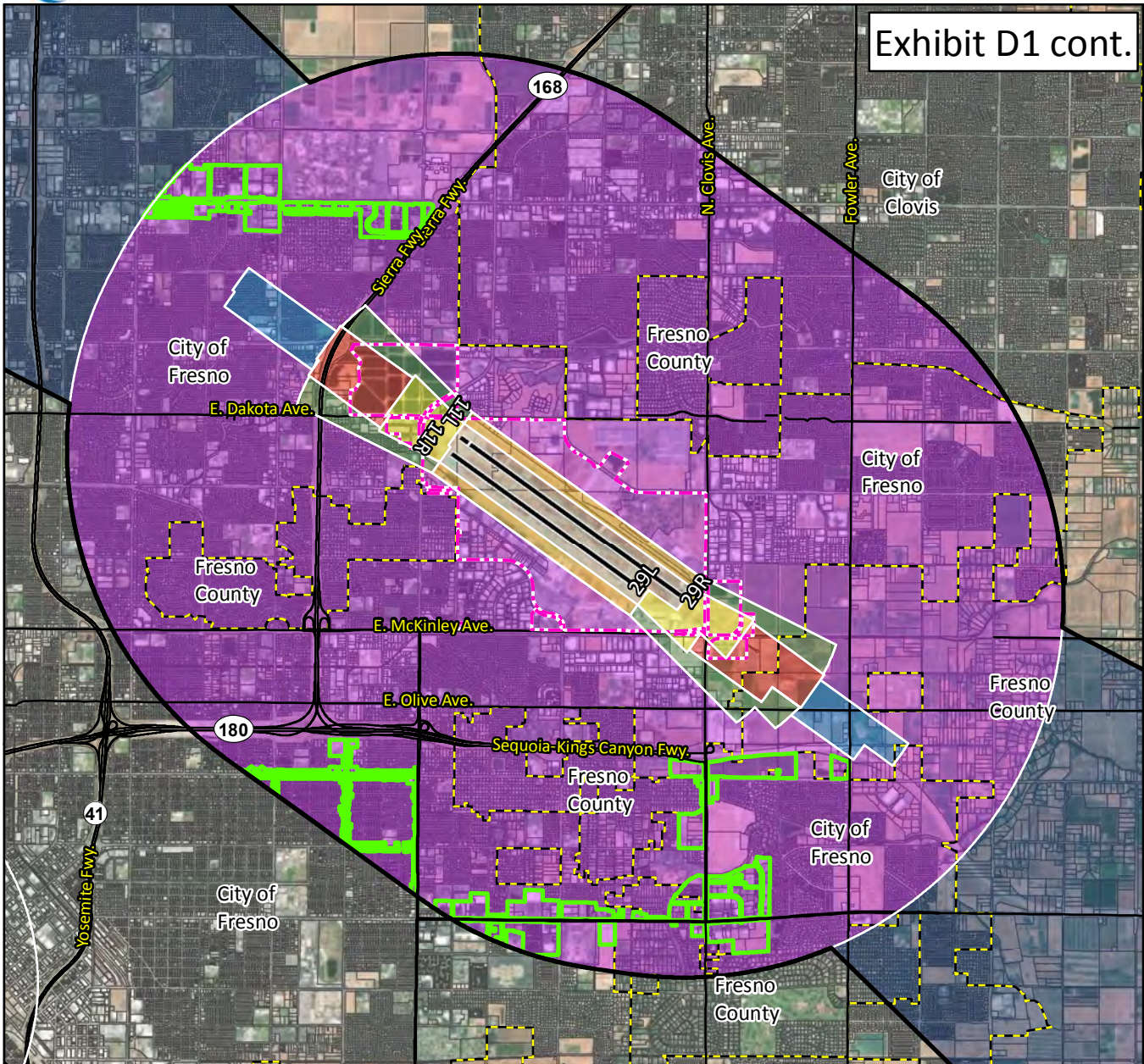
²AIA drawn from Part 77 Conical and Outer-Transitional surfaces. See 14 CFR, Subchapter E, Part 77, §77.25.

³City of Fresno, 2018

⁴Figure 3B, California Airport Land Use Planning Handbook (2011), and Coffman Associates Analysis. Sources: Fresno County Parcels, ESRI Basemap Imagery (2016).



Exhibit D1 cont.

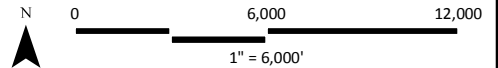


LEGEND

- Existing Runway¹
- Ultimate Runway¹
- Airport Property¹
- Parcel Boundary
- Municipal Boundary
- Streets
- Airport Influence Area (AIA)²
- Urban³

Safety Zones⁴

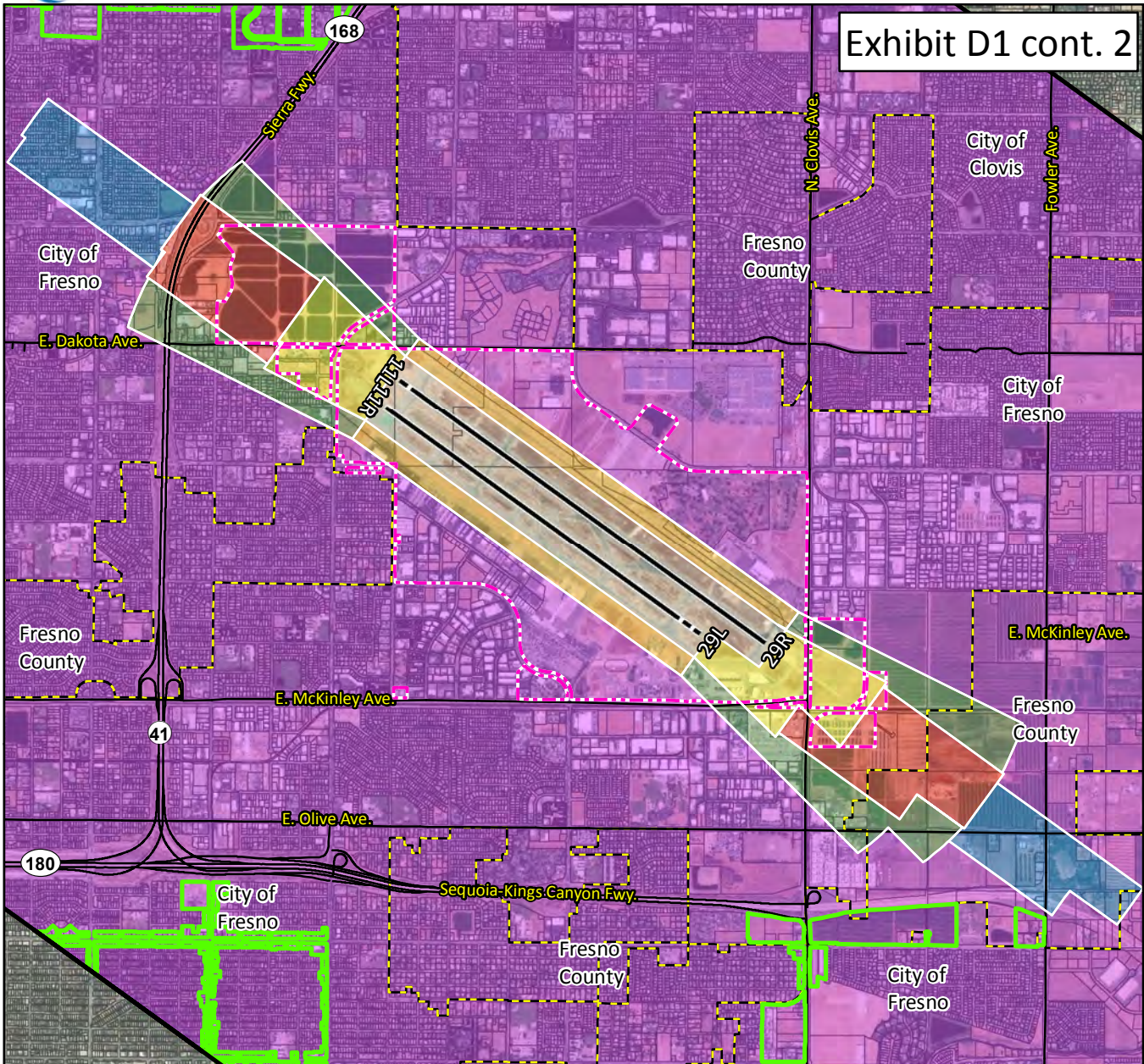
- 1. Runway Protection Zone
- 2. Inner Approach/Departure Zone
- 3. Inner Turning Zone
- 4. Outer Approach/Departure Zone
- 5. Sideline Zone
- 6. Traffic Pattern Zone
- 7. Precision Approach Zone



¹FresnoYosemite Intl. Airport Layout Plan (2013)
²AIA drawn from Part 77 Conical and Outer-Transitional surfaces. See 14 CFR, Subchapter E, Part 77, §77.25.
³City of Fresno, 2018.
⁴Figure 3B, California Airport Land Use Planning Handbook (2011), and Coffman Associates Analysis. Sources: Fresno County Parcels, Fresno County Streets, ESRI Basemap Imagery (2016).

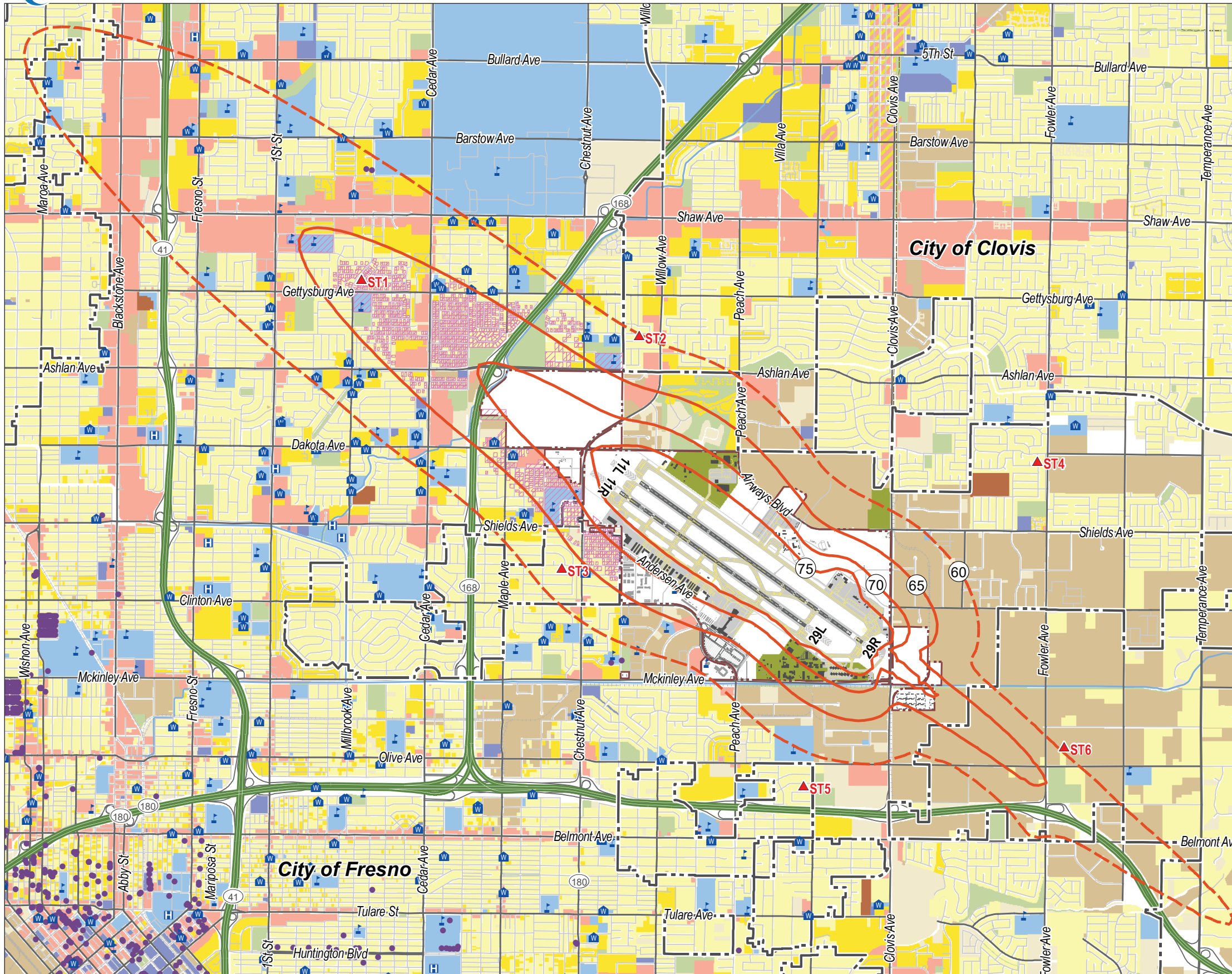


Exhibit D1 cont. 2



LEGEND		Safety Zones⁴		
	Existing Runway ¹		1. Runway Protection Zone	
	Ultimate Runway ¹		2. Inner Approach/Departure Zone	
	Airport Property ¹		3. Inner Turning Zone	
	Parcel Boundary		4. Outer Approach/Departure Zone	
	Municipal Boundary		5. Sideline Zone	
	Streets		6. Traffic Pattern Zone	
	Airport Influence Area (AIA) ²			
	Urban ³			

¹FresnoYosemite Intl. Airport Layout Plan (2013)
²AIA drawn from Part 77 Conical and Outer-Transitional surfaces. See 14 CFR, Subchapter E, Part 77, §77.25.
³City of Fresno, 2018.
⁴Figure 3B, California Airport Land Use Planning Handbook (2011), and Coffman Associates Analysis. Sources: Fresno County Parcels, Fresno County Streets, ESRI Basemap Imagery (2016).



LEGEND

- Forecast (2022) NEM Contour (65-75 dB CNEL)
- Forecast (2022) NEM Contour (60 dB CNEL)
- ▲ ST# Noise Monitor Location
- Airport Boundary
- Runway
- Taxiway / Apron
- Airport Buildings
- Municipal Boundary
- Highways
- Major Roads
- Local Roads
- Railroad
- Residential Use
- Multi-Family Residential
- Mobile Homes
- Public Use 1 (School, Place of Worship, Hospitals)
- Public Use 2 (Government, Transportation, Parking)
- Military Use
- Recreational / Open Space
- Commercial Use
- Industrial Use
- Vacant / Undefined
- Water
- Sound Insulated Property
- ▲ School
- ▲ Library
- ▲ Place of Worship
- ▲ Hospital
- Historic Site

Service Layer Credits: Fresno County GIS; City of Fresno, CA; City of Clovis, CA; California Department of Water Resources (DWR); Environmental Systems Research Institute (ESRI);

0 1" 2" 3"
0 2,000 4,000 8,000 Feet