

Requirements

Located in Fresno City limits

In a zone district that allows residential uses or has an existing residence

Has adequate space for setbacks and separations for fire and safety

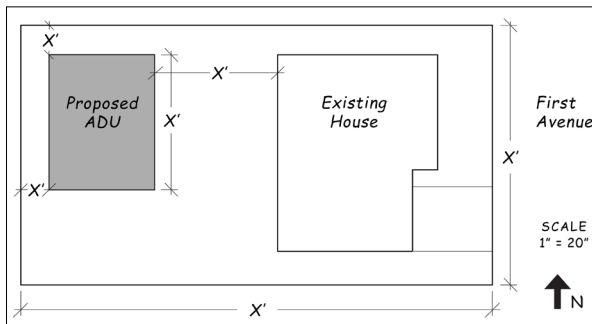
Has access to utilities

Designed similar to the primary home (if visible from the street in an architecturally or historically significant area)

Review & Fees*	Estimated Cost
Plans	FREE
Plan Check	
Building Permit	Up to \$1,660
School Impact Fee	varies by district

*Provided as an estimate; other departments and agencies may have applicable fees; fees are subject to change and will be calculated upon submission of an application.

Site Plan Example



Apply for a Permit

- 1 Select a pre-approved plan
- 2 Apply for a Building Permit at www.fresno.gov/permit-apply
- 3 Completed applications take approx. 14 days to review

Visit www.fresno.gov/adu for step-by-step tutorials and other information.

email: adu@fresno.gov
 phone: 559.621.8077
 web: www.fresno.gov/adu



City of Fresno



QUICK START GUIDE

for pre-approved plans

The Accessory Dwelling Unit (ADU) Program offers five (5) pre-approved plans, with a variety of sizes and styles that will match the diversity of Fresno's neighborhoods and the needs of households throughout the city.



Five (5) pre-approved plans available in three (3) styles.

*Plan #3 shown below



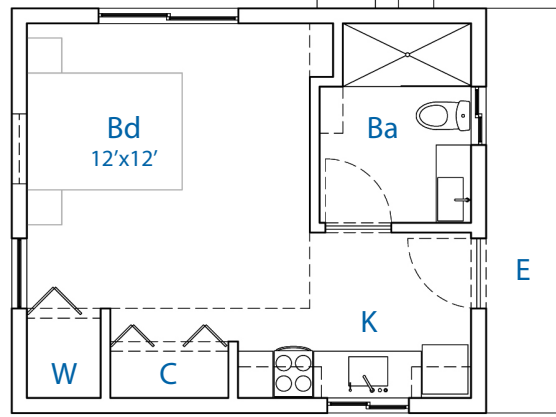
Contemporary



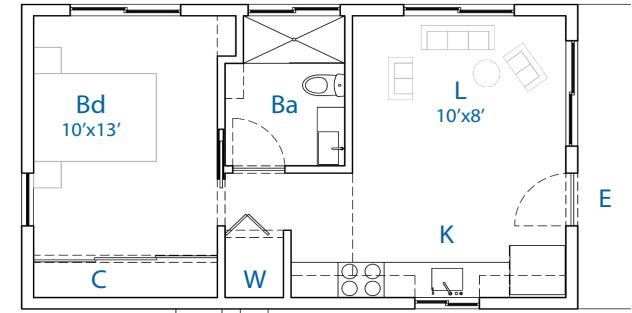
Craftsman



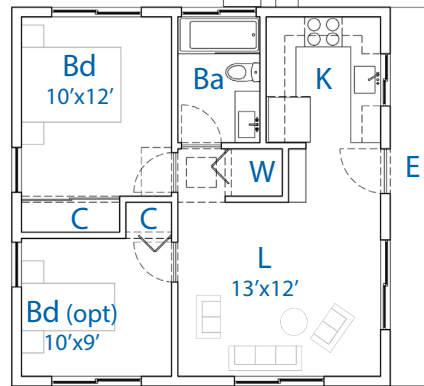
Gable



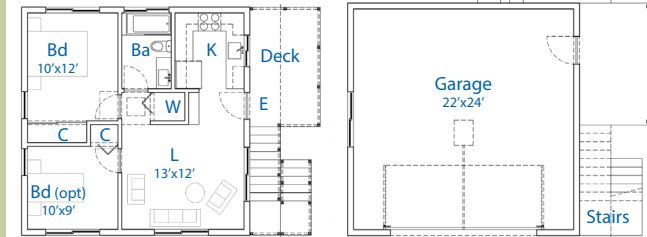
Plan #1 | 20'x17' | Studio 1 bath | 347 sq. ft.



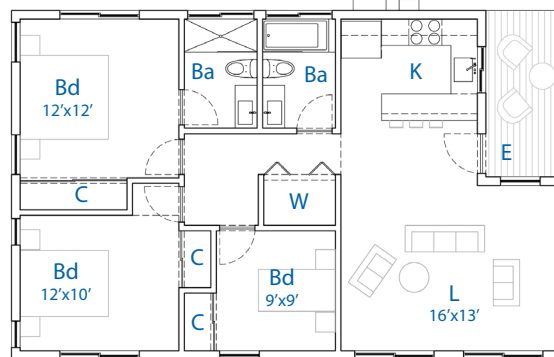
Plan #2 | 30'x17' | 1 bed 1 bath | 514 sq. ft.



Plan #3 | 25'x25' | 1-2 bed 1 bath | 633 sq. ft.



Plan #4 | 25'x25' (33' w/deck) | 1-2 bed 1 bath
Plan 3 over garage



Plan #5 | 41'x26' | 3 bed 2 bath | 1,015 sq. ft.

Note: dimensions are approximate

- E - Entry
- K - Kitchen
- L - Living Room
- Bd - Bedroom
- Ba - Bathroom
- C - Closet/Storage
- W - Washer/Dryer

View complete plans at
www.fresno.gov/adu