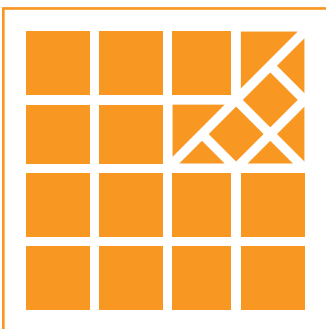


## **KEY QUESTIONS**

- A. What are key issues that affect health in Southwest?**
  
- B. Are there any factors to add to the list based on the Healthy City Framework?**

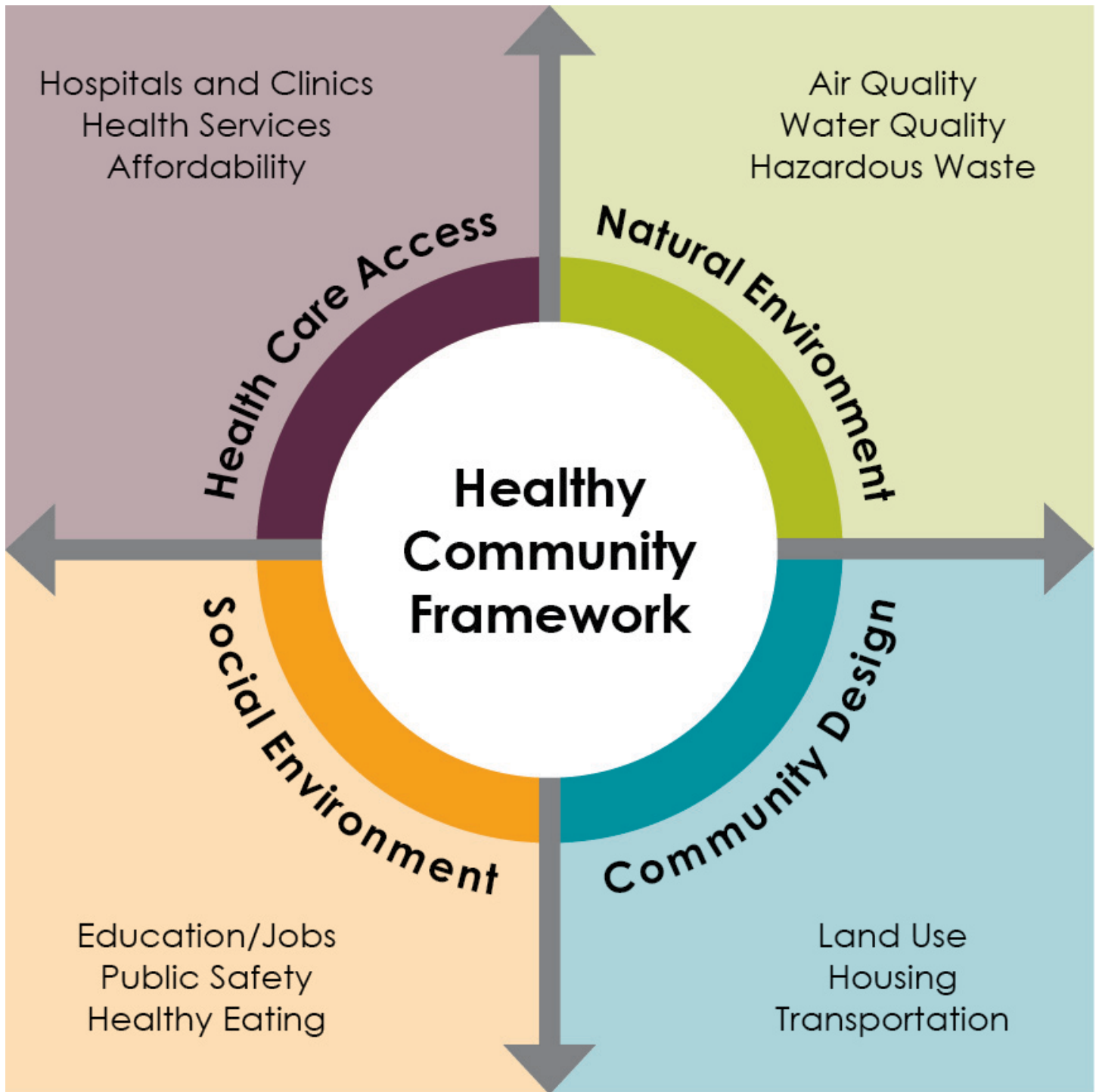


# **COMMUNITY ENVIRONMENTAL HEALTH**

---

**Southwest Fresno Specific Plan & EIR  
Community Workshop #1  
September 15, 2015**

Figure 4.1 Healthy City Framework



**TABLE 4.1 HEALTH PROFILE OF SOUTHWEST FRESNO**

	SW Fresno	City of Fresno	Fresno County	State of California
<b>Adults: Current Health Conditions</b>				
Diabetes: Adults Ever Diagnosed with Diabetes <sup>a</sup>	10.8%	8.3%	8.7%	8.4%
Health Status: Percentage of Adults 18-64 in Fair to Poor Health <sup>a</sup>	26.3%	22.5%	22.1%	17.9%
Obesity: Percentage of Adults 18-64 Who are Obese <sup>a</sup>	31.8%	28.5%	29.1%	24.8%
Asthma: Percent of Adults 18+ Diagnosed with Asthma <sup>a</sup>	16.7%	18.3%	17.9%	13.7%
<b>Children: Current Health Conditions</b>				
Diabetes: Percentage of Children Diagnosed with Diabetes <sup>a</sup>	N/A	N/A	N/A	N/A
Health Status: Percentage of Children in Fair to Poor Health <sup>a</sup>	N/A	7.6%	8.0%	6.0%
Overweight: Percentage of Children Ages 12-17 Who are Overweight/Obese <sup>a</sup>	N/A	38.1%	37.1%	32.4%
Asthma: Percent of Children Ages 0-17 Diagnosed with Asthma <sup>a</sup>	N/A	21.2%	19.8%	15.4%
<b>Risk Factors</b>				
Poverty: Percentage of Adults Living in Poverty <sup>a</sup>	34.1%	22.3%	19.9%	13.0%
Poverty: Percentage of Children Living in Poverty <sup>a</sup>	54.0%	38.1%	35.0%	20.9%
Smoking: Percentage of Adults 18+ who Currently Smoke <sup>a</sup>	16.6%	16.3%	15.5%	13.8%
Smoking Among Children: Percentage of Children who Currently Smoke <sup>a</sup>	N/A	N/A	N/A	N/A
Adults: Percentage of Adults 18-64 who are Not Insured <sup>a</sup>	27.1%	22.3%	22.4%	21.4%
Children: Percentage of Children who are Not Insured <sup>a</sup>	N/A	8.4%	8.5%	4.2%
Violent Crimes per 100,000 residents <sup>b</sup>	696	463	476	394
Property Crimes per 100,000 residents <sup>b</sup>	3,226	4,148	3,407	2,459
Adults 18+ who did not graduate from high or receive a GED <sup>c</sup>	43.7%	24.7%	26.3%	18.7%
Population 16+ who were unemployed (2009-2013) <sup>c</sup>	17.8%	15.7%	14.5%	11.5%

a. Source: California Health Interview Survey, Neighborhood Edition.

b. Source: California Attorney General Office, 2014; City of Fresno Police Department, 2014

c. Source: American Community Survey, 2009-2013.