

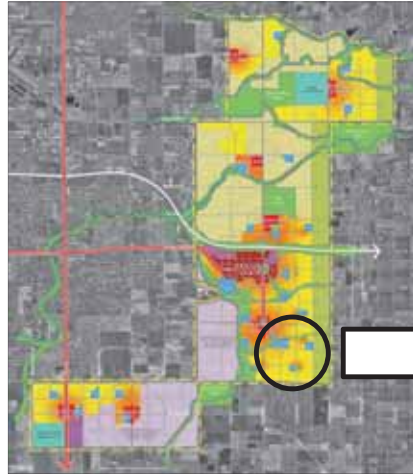
# NEIGHBORHOOD HOUSING OPTIONS

## SEGA NEIGHBORHOOD CENTERS (Alternatives 2 and 3)

Neighborhood centers and surrounding neighborhood residential areas in Alternatives 2 and 3 include a variety of housing options.

**Neighborhood centers feature lower-density multifamily products, townhomes, and a variety of single family homes.**

All of these options are within walking distance or a short drive or bike ride to schools and neighborhood or community centers.



### 1 LOWER-DENSITY MULTIFAMILY OPTIONS



A small amount of lower-density multifamily housing in the neighborhood centers brings more housing options within walking distance of the services and amenities in the neighborhood centers.

Density Range: 25 – 35 units per residential acre

### 2 TOWNHOME OPTIONS



Townhomes in the neighborhood centers provide single family housing options within the lower-density areas of the SEGA, within walking distance to services and schools.

Density Range: 15 – 25 units per residential acre

### 3 SMALL-LOT SINGLE FAMILY OPTIONS



The neighborhood centers and surrounding areas include a variety of small-lot single family housing types. There is a wide range of single family options in the SEGA alternatives.

Density Range: 12 – 15 units per residential acre

### 4 STANDARD-LOT SINGLE FAMILY OPTIONS



A variety of standard-lot single family housing options are located in and around the neighborhood centers, adding to the variety of options within walking distance of centers and open spaces.

Density Range: 6 – 10 units per residential acre

### 5 MEDIUM-LOT SINGLE FAMILY OPTIONS



Medium-lot single family homes are included in the areas surrounding the neighborhood centers, rounding out the wide diversity of new housing choices in the SEGA.

Density Range: 4 – 8 units per residential acre