

STAPLETON ECONOMIC OPPORTUNITY

A Complete Neighborhood is a neighborhood or district where residents can meet many or all of their daily needs within a short and safe walk, bike ride, drive, or transit trip. Complete Neighborhoods include a variety of housing options, and can include basic services in smaller neighborhood centers and major retail, employment, and civic amenities in larger community and regional centers. Complete Neighborhoods are connected to the larger community or region through efficient roadway networks, transit service, bicycle trails, and safe pedestrian routes.

Essential characteristics of a Complete Neighborhood include Environmental Sustainability, Transportation Choices, Community Farming, Housing Choices, Economic Opportunity, and Open Space and Green Infrastructure. Stapleton Case Study boards throughout the Workshop describe how Stapleton has designed and implemented the key components of Complete Neighborhoods.

Economic Opportunity in Stapleton is achieved through a number of strategies:

- Enhance social, economic, and cultural diversity in and around Stapleton.
- Create opportunities for minority and small business participation in development.
- Provide jobs and training for a diverse workforce and entrepreneurial opportunities for local residents.
- With the Stapleton Farmers' Market, offer access to local merchants, contributing to a more vibrant community by ensuring a balance between these smaller entities and national food distributors.
- Design mixed-use employment districts to promote local job growth and minimize commutes.
- Provide mixed-use town centers near neighborhoods to offer easy access to goods, services and jobs.



Mixed-use Office in the East 29th Avenue Town Center



Stapleton Business Center

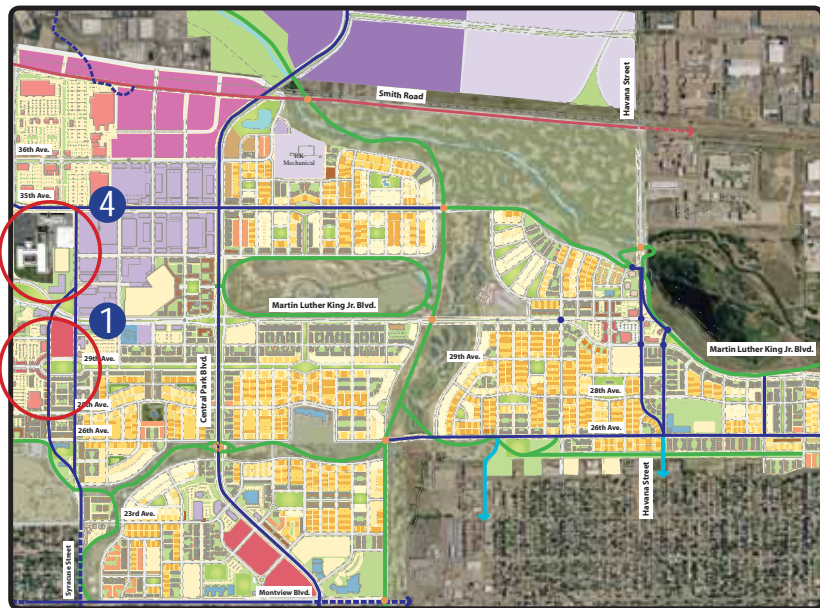


United Airlines Training Facility

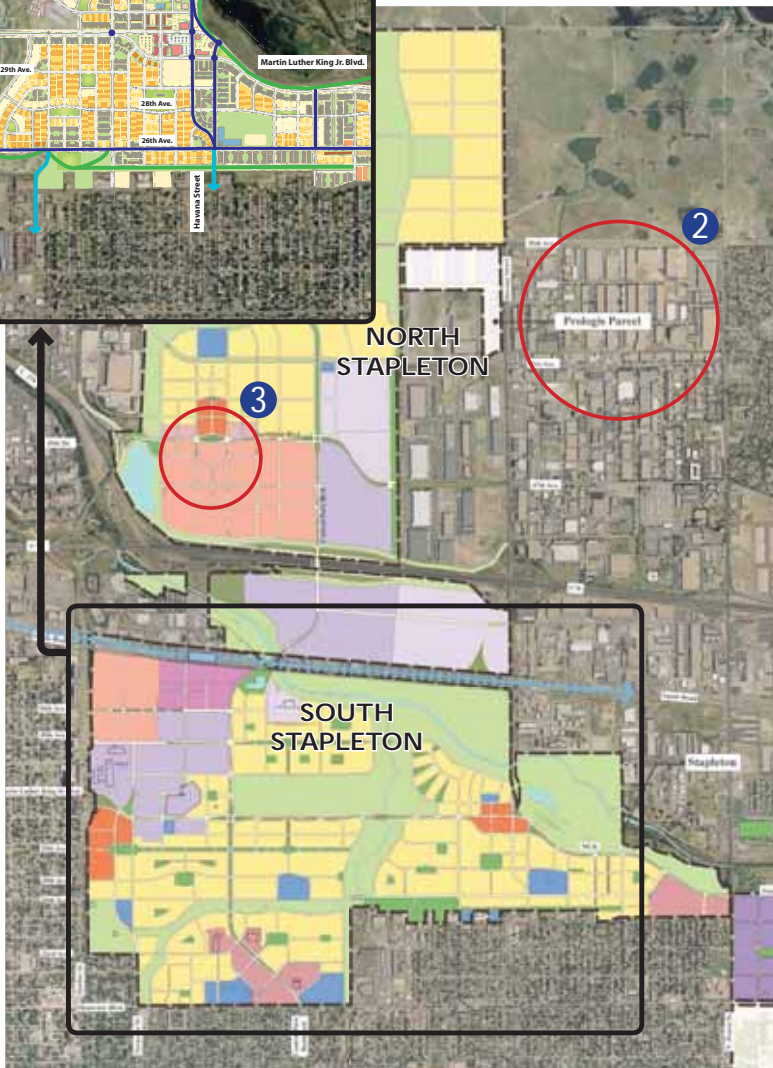


The shops at Northfield Stapleton

SOUTH STAPLETON Detailed Land Use Plan



STAPLETON Overall Land Use Plan



PROJECT SUMMARY

Client:
Forest City Enterprise, Inc.
www.forestcity.net
www.stapletondenver.com

Area:
4,700 acres

Public Transportation:
RTD Bus Routes,
AirTrain Transit Center (planned)
FasTracks Light Rail (planned)

Residential:
12,000 units

Retail:
4.2 million square feet

Office, Research, and Development:
8.2 million square feet

Research, Development, and Distribution:
1.5 million square feet

Open Space:
1,116 acres

OPEN SPACE and GREEN INFRASTRUCTURE



Source: Forest City Enterprises

Source: Forest City Enterprises

HOUSING CHOICES



COMMUNITY FARMING



Source: The Urban Farm at Stapleton

Source: The Urban Farm at Stapleton

TRANSPORTATION CHOICES



Source: micky_chulo_2

ENVIRONMENTAL SUSTAINABILITY



COMPLETE NEIGHBORHOODS



Source: Forest City Enterprises

Source: micky_faceless_0

