

STAPLETON

TRANSPORTATION CHOICES

A Complete Neighborhood is a neighborhood or district where residents can meet many or all of their daily needs within a short and safe walk, bike ride, drive, or transit trip. Complete Neighborhoods include a variety of housing options, and can include basic services in smaller neighborhood centers and major retail, employment, and civic amenities in larger community and regional centers. Complete Neighborhoods are connected to the larger community or region through efficient roadway networks, transit service, bicycle trails, and safe pedestrian routes.

Essential characteristics of a Complete Neighborhood include Environmental Sustainability, Transportation Choices, Community Farming, Housing Choices, Economic Opportunity, and Open Space and Green Infrastructure. Stapleton Case Study boards throughout the Workshop describe how Stapleton has designed and implemented the key components of Complete Neighborhoods.

Stapleton's Transportation goal is "to create a more sustainable community and environment by reducing traditional traffic volume and by encouraging the use of alternative transportation methods, from buses, to carpooling, to walking and biking." (Stapleton Sustainability Master Plan)

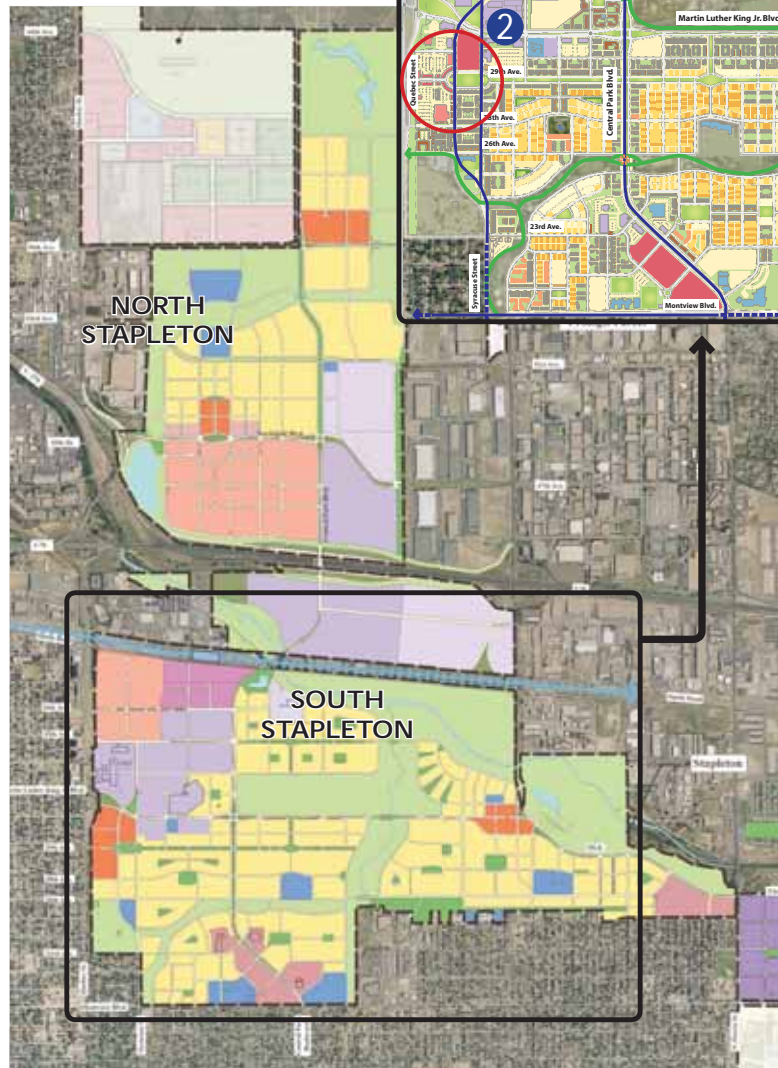
Stapleton has realized this goal through a range of measures:

- Diverse land uses are offered in regional, town and village centers.
- Buildings face onto the street, creating inviting entrances and active streets.
- Tree-lined streets, wide sidewalks, and parallel parking create pedestrian-friendly streetscapes.
- A continuous bikeway system is incorporated into street design, promoting alternative transportation.
- A connected street network provides easy and efficient access to neighborhoods.
- Regional bus routes and the upcoming AirTrain system and FasTracks light rail system will be easily accessible from neighborhoods.

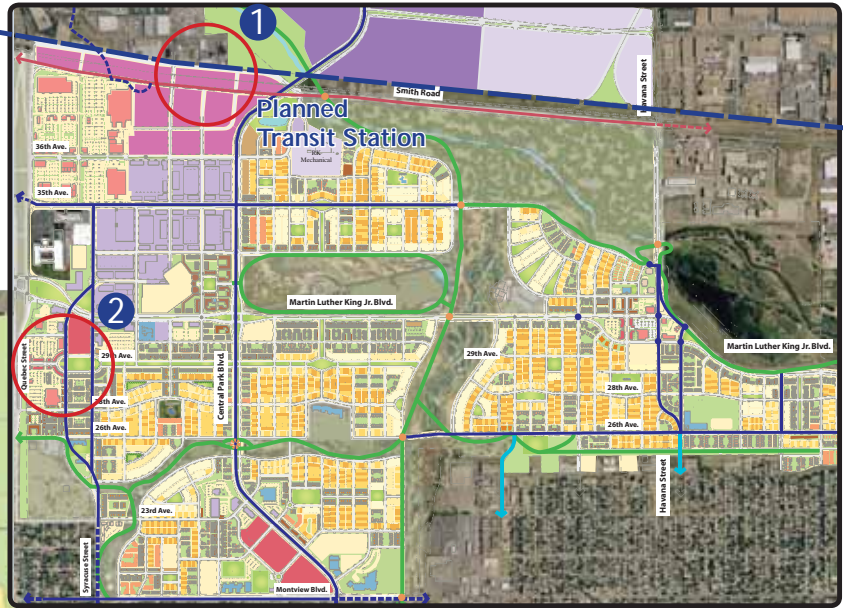


STAPLETON

Overall Land Use Plan



SOUTH STAPLETON Detailed Land Use Plan



PROJECT SUMMARY

Client:
Forest City Enterprise, Inc.
www.forestcity.net
www.stapletondenver.com

Area:
4,700 acres

Public Transportation:
RTD Bus Routes,
AirTrain Transit Center (planned)
FasTracks Light Rail (planned)

Residential:
12,000 units

Retail:
4.2 million square feet

Office, Research, and Development:
8.2 million square feet

Research, Development, and Distribution:
1.5 million square feet

Open Space:
1,116 acres

OPEN SPACE and GREEN INFRASTRUCTURE



ECONOMIC OPPORTUNITY



HOUSING CHOICES



COMMUNITY FARMING



ENVIRONMENTAL SUSTAINABILITY



COMPLETE NEIGHBORHOODS

