

STAPLETON

OPEN SPACE and GREEN INFRASTRUCTURE

A Complete Neighborhood is a neighborhood or district where residents can meet many or all of their daily needs within a short and safe walk, bike ride, drive, or transit trip. Complete Neighborhoods include a variety of housing options, and can include basic services in smaller neighborhood centers and major retail, employment, and civic amenities in larger community and regional centers. Complete Neighborhoods are connected to the larger community or region through efficient roadway networks, transit service, bicycle trails, and safe pedestrian routes.

Essential characteristics of a Complete Neighborhood include Environmental Sustainability, Transportation Choices, Community Farming, Housing Choices, Economic Opportunity, and Open Space and Green Infrastructure. Stapleton Case Study boards throughout the Workshop describe how Stapleton has designed and implemented the key components of Complete Neighborhoods.

Open Space and Green Infrastructure achievements at Stapleton include:

- Continuity of open space is maximized for wildlife migration and recreational use.
- Schools and greenway areas are connected to ensure safe walking commutes for children.
- Recreation areas are integrated into the greenway network for easy access from neighborhoods.
- Creeks and other natural features have been preserved to protect the land and serve as a recreational amenity.
- Impervious surfaces are minimized with the use of permeable surfaces, narrower streets, tuck-under parking that reduces outdoor lots, and parking lots that integrate unpaved areas to promote natural drainage and landscaping.
- Stormwater systems, including water quality ponds, wetlands, and landscape swales, reduce pollutants at their source.



Trails at Bluff Lake Natural Area



Greenway Park's skatepark

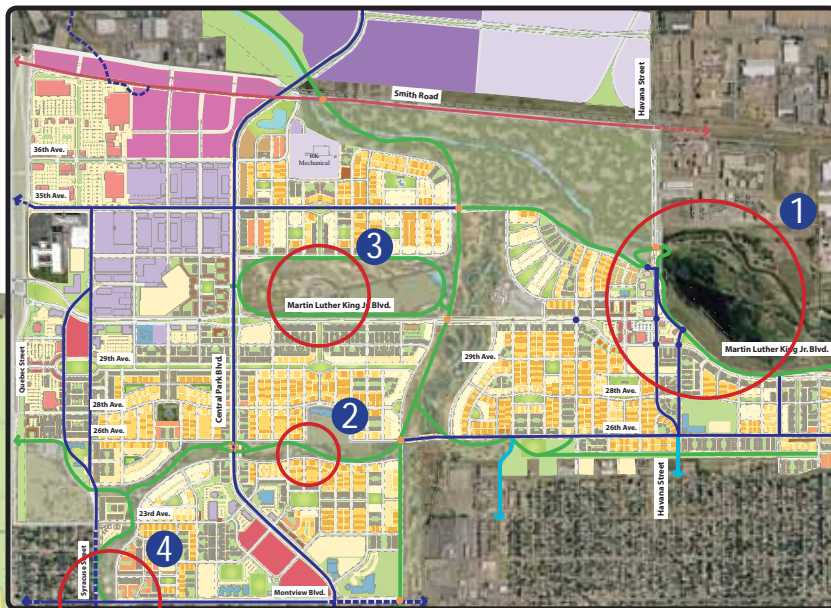


Central Park

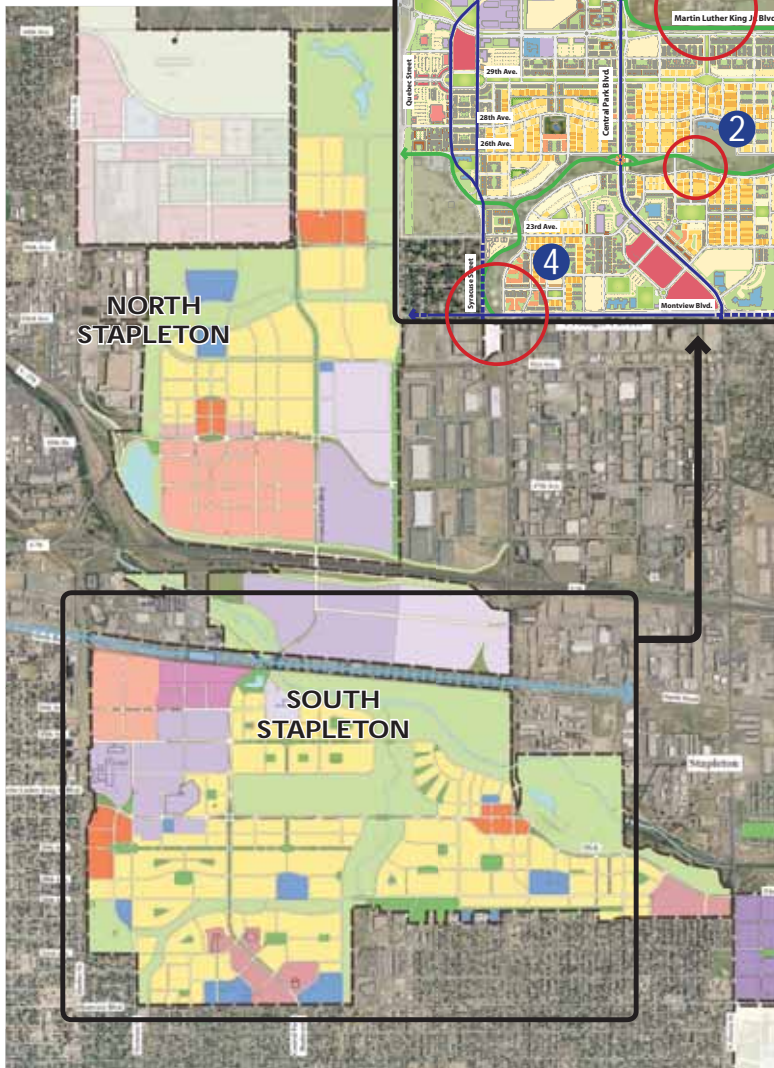


Dog Park

SOUTH STAPLETON Detailed Land Use Plan



STAPLETON Overall Land Use Plan



PROJECT SUMMARY

Client:
Forest City Enterprise, Inc.
www.forestcity.net
www.stapletondenver.com

Area:
4,700 acres

Public Transportation:
RTD Bus Routes,
AirTrain Transit Center (planned)
FasTracks Light Rail (planned)

Residential:
12,000 units

Retail:
4.2 million square feet

Office, Research, and Development:
8.2 million square feet

Research, Development, and Distribution:
1.5 million square feet

Open Space:
1,116 acres

ECONOMIC OPPORTUNITY



HOUSING CHOICES



COMMUNITY FARMING



TRANSPORTATION CHOICES



ENVIRONMENTAL SUSTAINABILITY



COMPLETE NEIGHBORHOODS

