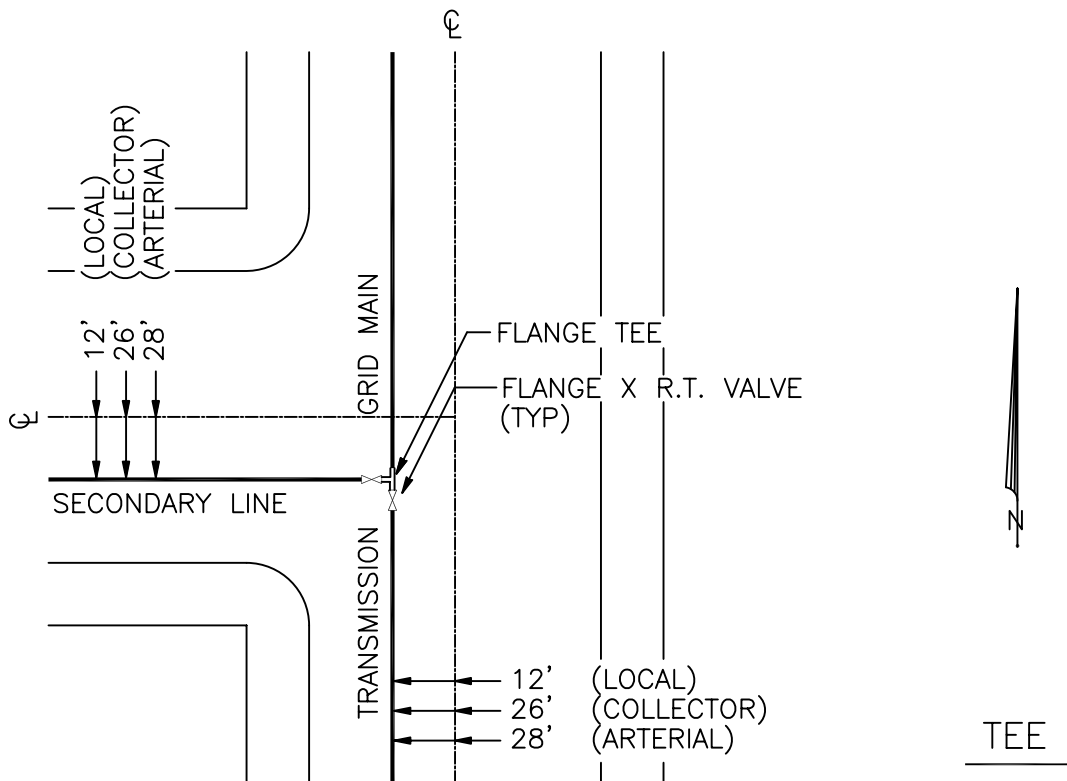


NOTES:

1. DISTANCE BETWEEN VALVES SHALL NOT EXCEED 600' WITHOUT APPROVAL OF ENGINEER.
2. RINGTITE JOINTS SHALL MEAN TYTON JOINT WHERE CAST IRON OR DUCTILE IRON PIPE IS USED.



TYPICAL INTERSECTION CONNECTIONS

REF. & REV.
AUG., 2002

CITY OF FRESNO

W-27