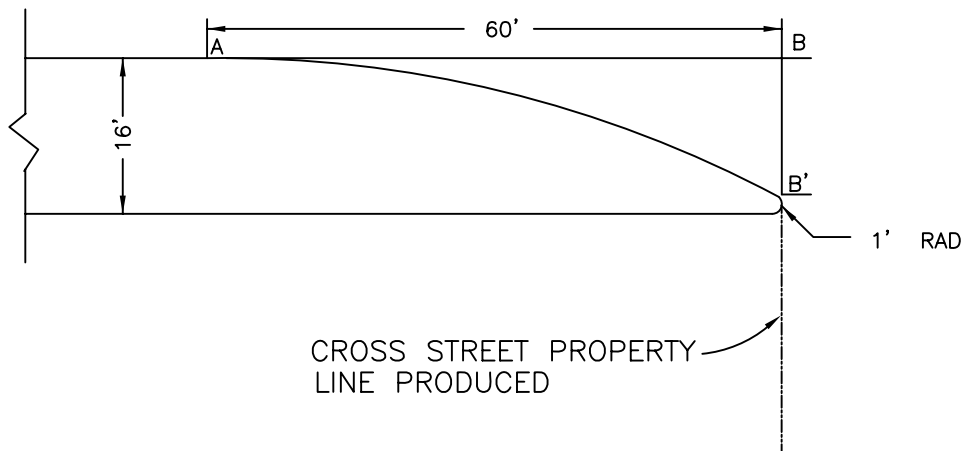


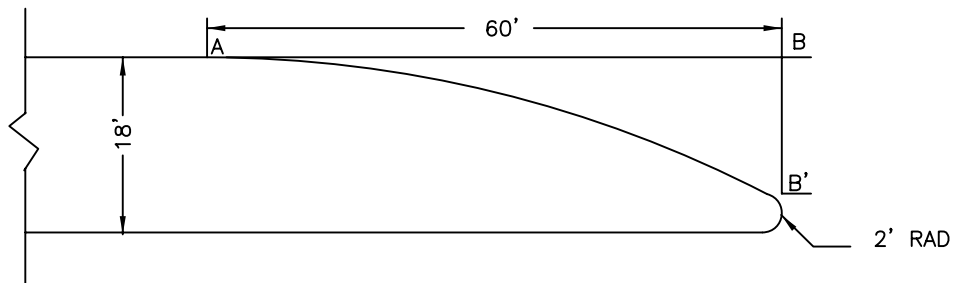
CURVE TABLE	
DIST. FROM POINT A	OFFSET B-B'
10'	.40'
20'	1.58'
30'	3.56'
40'	6.33'
50'	9.99'
55'	11.97'

MEET 1' RAD. AT 60' ±



CURVE TABLE	
DIST. FROM POINT A	OFFSET B-B'
10'	.40'
20'	1.58'
30'	3.56'
40'	6.33'
50'	9.99'
55'	11.97'

MEET 2' RAD. AT 60' ±



CURVE TABLE	
DIST. FROM POINT A	OFFSET B-B'
10'	.32'
20'	1.30'
30'	2.92'
40'	5.19'
50'	8.11'
60'	11.68'
70'	15.90'

MEET 2' RAD. AT 75' ±

