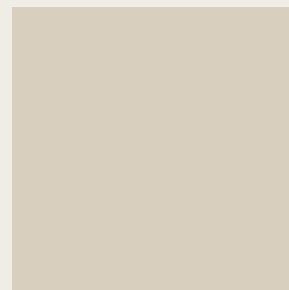
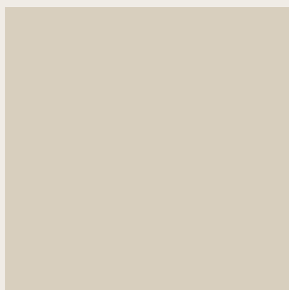
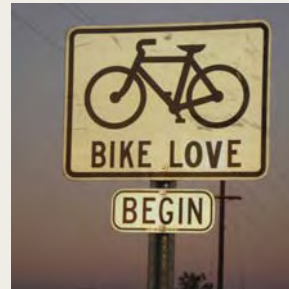
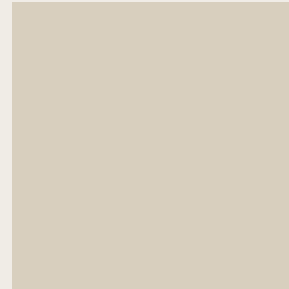
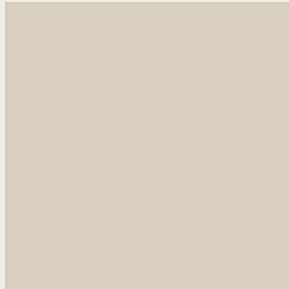




CITY OF FRESNO BICYCLE, PEDESTRIAN, & TRAILS MASTER PLAN



Prepared for:
CITY OF FRESNO



Prepared by:

FEHR & PEERS

Bicycle, Pedestrian, & Trails Master Plan

© 2010 *City of Fresno*

All rights reserved.

ACKNOWLEDGEMENTS

Thank you to City of Fresno voters and the following City dignitaries for making this project possible through Measure C funding.



Mayor of Fresno

Ashley Swearengin

City Council Members

Larry Westerlund, President

Lee Brand, Acting President

Blong Xiong

Andreas Borgeas

Cynthia Sterling

Mike Dages

Henry T. Perea

Planning Commission Members

Jaime Holt, Chair

Serop Torossian, Vice Chair

Paul Caprioglio

Rama Dawar

Andy Hansen-Smith

Luisa Medina

Rojelio Vasquez

City Manager

Mark Scott

Assistant City Manager

Bruce Rudd

Public Works Director

Patrick Wiemiller

Development and Resource Management Director

John Dugan

Fresno Area Express Director

Kenneth Hamm

Fire Chief

Randy Bruegman

Police Chief

Jerry Dyer

PARCS Director

Randy Cooper

Downtown and Community Revitalization Director

Craig Scharton

City Attorney

James Sanchez

City Engineer

Scott Mozier, PE, TE

ACKNOWLEDGEMENTS

Bryan Jones is the City Traffic Engineer and Traffic Engineering Division Manager for the City of Fresno. His many responsibilities include overseeing the roadways, signs, traffic signals, roundabouts, traffic circles, street lights, transportation planning, traffic control plan review, street design plan checks, special permits, service requests, bicycle/pedestrian transportation, safe route to schools program, and the Intelligent Transportation System (ITS signal synchronization). Bryan has extensive experience in both public and private engineering and planning. He is a graduate of the University of California, Davis in Civil Engineering with an emphasis in Transportation and a minor in Communications. Bryan is currently the President of the Institute of Transportation Engineers (ITE) Central Valley Section, the Staff Director for the Bicycle and Pedestrian Advisory Committee (BPAC), and holds a professional engineering license in Traffic Engineering (TE), a Professional Transportation Planning (PTP) certificate, and American Institute of Certified Planners (AICP) membership.

Bryan has been with the City of Fresno for more than four years and is the project manager responsible for executing the City's first Bicycle, Pedestrian, and Trails Master Plan (BMP).

Bryan's vision with the BMP is to transform the City of Fresno into a bicycle-friendly community. He thanks the Fresno County voters for having the foresight to fund bike lane and trail infrastructure with the Measure C half-cent sales tax. The funding allowed Bryan to work with the community through extensive outreach to develop the BMP. These funds also helped enhance safety and mobility for all users by redeveloping Fresno's roadways into "complete streets."

With JP Marketing, Bryan founded *ibikefresno.org* (Facebook and Internet) and *2010 Bike Fresno*. Both of these campaigns help promote the Plan and introduce people who live, work, and play in Fresno to the benefits of biking for health and better air quality. With JP Marketing and Eye-Q, Bryan has also formed a non-profit called the Bike Happy Foundation to raise funds to further promote and support local bike organizations, clubs, teams, and events focused on bicycling education, encouragement, and enforcement. Bryan is also working with the Eye-Q Two Cities Marathon Race directors to start another major health and fitness event in Fresno called the "California Classic Weekend," which will include the Fresno Classic Century, the Fresno Classic Half Marathon, and many other events all based

out of Downtown Fresno. This world class event will help revitalize Downtown Fresno as the focal point for entertainment and biking in the Central Valley.

Lori Cherry is the **Chairman** for the Bicycle Pedestrian Advisory Committee (BPAC) (appointed by Councilmember Blong Xiong in City Council District 1) and is a physical therapist for Function and Action Physical Therapy. She is a cycling advocate and has been an active member of the Fresno Cycling Club and the Fresno County Bicycle Coalition (FCBC) for several years. Lori often puts more miles on her bike per year than the average person puts on a motor vehicle. She has ridden her bike across the United States twice and on three different continents. She has completed numerous centuries, double centuries and ultra endurance events, such as the Furnace Creek 508 and the Paris-Brest-Paris 1200k. She is active in the FCBC's promotion of May is Bike Month and the Corporate Challenge and took the lead in creating commercials to be aired on local TV stations to educate and encourage Fresnoans to Ride their Bikes and ride safely. Lori commutes to work on her bike, and if she is in her Prius, her bike is usually attached on top as she is headed somewhere to bike.

ACKNOWLEDGEMENTS (CONTINUED)

Dr. Stephen Lewis serves as the **Vice Chairman** of the Bicycle Pedestrian Advisory Committee (BPAC) (appointed by Councilmember Mike Dages in City Council District 5). Stephen began his bicycle advocacy work in Mountain View, where he was a charter member of that city's Bicycle Pedestrian Bicycle Committee. He was later elected to the Mountain View City Council, where he was able to advocate for bicycle facilities in Silicon Valley. Stephen is the Department Chair for the Department of Earth and Environmental Sciences at California State University, Fresno. He also serves as the Chair for the Fresno County Bicycle Coalition and is Head Cycle Coach for the Team in Training, the endurance training program of the national Leukemia and Lymphoma Society. Stephen is a League Certified Bicycle Safety Instructor (LCI) of the League of American Bicyclists. He participates in century bicycle rides, having completed the Climb to Kaiser, the Tour de Tucson, and America's Most Beautiful Bike Ride around Lake Tahoe, among others. Stephen usually commutes on his bike to work and enjoys the many miles of roadways within the City of Fresno and entire region for commuting and recreational long distance riding.

Nick Paladino, Secretary, has served on the BPAC since October 2003, previously serving as chairman of the committee. He was appointed by Councilmember Lee Brand in City Council District 6. He is a retired Lieutenant Colonel in the US Air Force. Nick has been involved in bicycle advocacy work since 1996 and has been the Fresno Cycling Club's Advocacy Director for over a decade. In the 2006 Measure C Half Cent Sales Tax, he was instrumental in getting approximately \$55 million identified for bike lanes and trails to expand the bicycle infrastructure in Fresno County. Nick also serves on the Technical Advisory Committee at the Council of Fresno County Governments. He is primarily a recreational road cyclist who enjoys century bicycle rides. Nick strives to bicycle at least 5,000 miles each year.

Philip Decker is a committee member for the Bicycle Pedestrian Advisory Committee (BPAC) (appointed by Mayor Ashley Swearingin). Philip is a mechanical engineer for a local consulting company. He is involved with many local non profit organizations, including Tree Fresno, the San Joaquin River Parkway Trust, FCBC, the San Joaquin Valley USGBC Chapter, and many others. He has also participated in

many of the efforts to bring changes to the surrounding area of Fresno, including SEGA, Fresno County Blueprint, TreeTops, and the Downtown Studies. His involvement with bike trails started with the Coalition for Community Trails, which was proactive in bringing about the Clovis Old Town Trail and Sugar Pine Trails. Philip rides his bike for both recreation and exercise and rides to work on occasion.

David Moll is a committee member for the Bicycle Pedestrian Advisory Committee (BPAC) (appointed by Mayor Ashley Swearingin). David is an Assistant Vice President for Risk Management and Sustainability at California State University, Fresno. He is involved with the Fresno State Campus Master Plan and is looking for ways to partner with the City of Fresno and promote biking to students, faculty, and staff for a more sustainable campus. Coordination between the Campus Master Plan and Bicycle Master Plan is important to connect bicycle infrastructure between the City and the campus. David can be seen from time to time riding through the neighborhoods and trails of North Fresno on his "fat tire" cruiser bike. His wife, Carol, is an avid long-distance recumbent bicycle rider.

ACKNOWLEDGEMENTS (CONTINUED)

Nancy Ellis has been a member of the Fresno Bicycle Pedestrian Advisory Committee since its inception (appointed by Council Member Henry T. Perea from Council District 7). Nancy served as Secretary of the Committee for several years. She became interested in cycling and bicycle advocacy because of the automobile exhaust air pollution problem in the San Joaquin Valley. She is a League Certified Bicycle Safety Instructor (LCI) of the League of American Bicyclists. Nancy has been a member of the Board of Directors of the Fresno County Bicycle Coalition for five years, and has taught numerous bicycle safety workshops at local schools.

Joseph Guagliardo was appointed to the Bicycle Pedestrian Advisory Committee (BPAC) by Councilmember Cynthia Sterling and represents District 3. He is president of Comprehensive Planning Associates, Inc., a land use and development consulting firm located in Fresno. Joe has provided land use and planning consulting services to a wide variety of local governmental entities, as well as private clients. With 30 years of planning experience, Joe's emphasis is seeing that all forms of transportation are considered and, wherever possible, integrated into developments. Joe is a recreational bicycle rider.

Dr. David Lighthall is a committee member for the Bicycle Pedestrian Advisory Committee (BPAC) (appointed by Councilmember Larry Westerlund in City Council District 4). David is a Health Science Advisor for the San Joaquin Valley Air Pollution Control District. He is formerly the Chair of the Fresno County Bicycle Coalition and is also a member of Central California Off-Road Cyclists. David's love of cycling spans commuting, long-distance events such as the Davis Double Century, mountain biking, and cyclocross. Since moving to Fresno in 2004 from Davis, David is thoroughly gratified by the depth, diversity, energy, and accomplishments of the Fresno-area cycling community.

Fehr & Peers was the project lead for the City of Fresno Bicycle, Pedestrian, and Trails Master Plan. Fehr & Peers is one of the few ENR 500 firms to focus exclusively on delivering transportation planning and traffic engineering services to public agencies, institutions, and private companies. Since the firm's inception in 1985, Fehr & Peers has developed strong client relationships by following core values of integrity and expertise in the firm's production of work, being responsive to clients, and providing innovative solutions to transportation problems. Fehr & Peers has

13 locations throughout the western United States, including an office in Fresno.

Mark Thomas & Company, Inc. (MTCO) provided civil engineering services for the City of Fresno Bicycle, Pedestrian, and Trails Master Plan. MTCO is a California firm with its corporate headquarters in San Jose. Since 1927, the firm has provided consulting engineering services for transportation, structural and municipal engineering, planning services, Right of Way engineering, surveying and mapping, and engineering management services for various government agencies and private enterprises. Mark Thomas & Company has nine locations throughout California, including an office in Fresno.

Quad Knopf provided environmental assessment, public outreach, and maintenance strategies to the City of Fresno Bicycle, Pedestrian, and Trails Master Plan. Quad Knopf provides integrated services in the broad disciplines of land use planning, environmental services, civil engineering, land surveying, biology, landscape architecture, and construction services as one full-service unit. Quad Knopf's corporate office is located in Visalia, California, and they also have an office in Fresno.

ACKNOWLEDGEMENTS (CONTINUED)

Designlab 252 is a full service Landscape Architecture firm founded in 2007. The company provides all aspects of Landscape Architecture, Urban Design and Development Services, but is particularly suited to large scale transportation projects. For the City of Fresno Bicycle, Pedestrian, and Trails Master Plan, Designlab 252 provided trail design specifications and public outreach. Designlab 252 is headquartered in Fresno.

Economic & Planning Systems, Inc.

(EPS) specializes in the economics of real estate development, the financing of public infrastructure and government services, land use and conservation planning, and government organization. Founded in 1983, EPS serves public- and private-sector clients in California and throughout the United States. EPS often works as part of a project team with urban designers, redevelopment specialists, transportation planners, civil engineers, and developers, to assist local agencies in formulating effective revitalization efforts as part of planning projects or formal redevelopment programs. For the City of Fresno Bicycle, Pedestrian, and Trails Master Plan, EPS provided funding analysis. EPS has offices in Berkeley, Sacramento, and Denver.