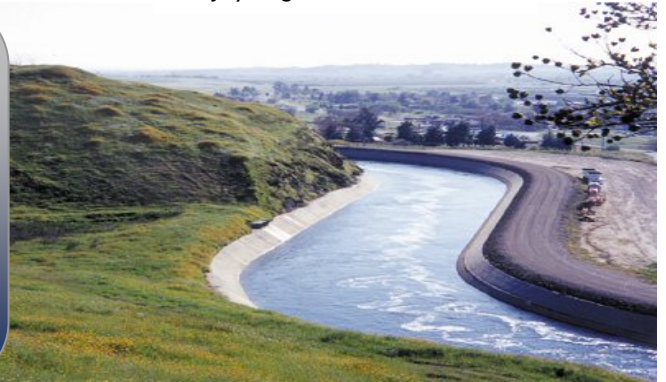


# FRESNO WATER SAVER



A Publication of the City of Fresno Water Conservation Program

Friant-Kern Canal

## PROGRAMMABLE HOSE TIMERS

► *Connect your hose to a portable programmable hose timer, and you'll be able to water your yard on your specified schedule, even if you forget or are on vacation!*

Even if you don't have an in-ground sprinkler system, you can still automate your watering schedule. Connect your hose to a portable programmable hose timer, and you'll be able to water your yard on your specified schedule, even if you forget or are on vacation!



These portable timers are attached between the outdoor faucet and garden hose by simply screwing the timer onto the faucet and the hose onto the timer; no tools are required.



When you are not there to turn the water on, or when you forget to turn it off, a battery hose timer can be a good investment. It is easy to install and to program. A battery timer will turn your system on and off at designated times so plants get the steady consistent watering they need for optimum health and production.

Portable timers can easily be found at local hardware and garden stores. They come with different features; prices range between about \$15 to \$100.

**Make sure the timer you purchase can be programmed to follow the City of Fresno's watering days and hours.**

Call 621-5480 and arrange for a Landscape Specialist to meet with you at your residence to show examples of these timers. Or, you can call 621-5480 for a telephone consultation. If you have already purchased a hose timer, we can also have a representative help you set it for the City's irrigation times.

Call 621-5480 and a representative can help you set your timer!

Please note that daytime watering hours have changed.

**Please note that daytime watering hours have changed.**

<b>SPRING/SUMMER WATERING SCHEDULE</b> <b>March 2 - November 30</b>	
<b>ODD</b> Numbered Addresses: (Ending in 1, 3, 5, 7, 9) <b>Tuesday, Thursday, Saturday</b>	<b>EVEN</b> Numbered Addresses: (Ending in 0, 2, 4, 6, 8) <b>Wednesday, Friday, Sunday</b>
<b>NO WATERING MONDAYS.</b>	
<b>NO WATERING 6 AM TO 7 PM</b>	

## **\$Rebates**

When you are ready to replace your old **clothes washer** or water guzzling **toilet**, the City has a rebate to help pay for qualifying replacements. For an application, click on \$Rebates at [www.fresnowater.org](http://www.fresnowater.org).

## LOOKING FOR EDUCATIONAL WATER FUN FOR THE **KIDS**?

Kids like to have fun, and here is a way for your children to learn more about water in a fun and educational way. The online water computer games below can provide hours of entertainment while your child learns about the importance of water. Call 621-5480 and we can send you a brochure with more sites!

We also want to remind you that the City's Water Education Coordinator is available to visit classrooms and make presentations about our water. Students will learn more about the local water they drink and how to conserve it. Handouts will also be provided to take home or for use in the classroom. Call for information: 621-5480.



<http://kids.earth.nasa.gov/droplet.html>



<http://www.groundwater.org/kc/kc.html>

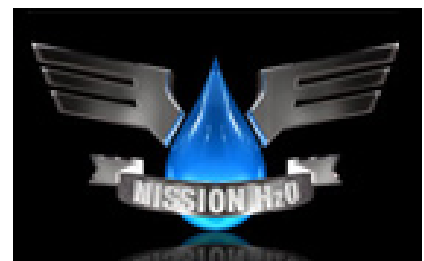


<http://www.twdb.state.tx.us/kids/>

<http://ga.water.usgs.gov/edu/>



<http://www.splashzoneusa.com/home.html>



<http://www.savewater.com.au/>





## WATER WORD SEARCH

Find & Circle the Following Water Words in the Puzzle Below:

AQUIFER	BATHTUB	CONSERVE	DRIBBLE
FAUCET	HOSE	LEAK	MOLLY
PUDDLE	SINK	TOILET	WALLY

Look carefully...Words can be found side to side, up and down, at an angle & backwards!

## HOW WELL DO YOU KNOW YOUR H<sub>2</sub>O?

**1. What activity in your home uses the most water?**

- A. Toilet flushing
- B. Taking a bath or shower
- C. Washing laundry
- D. Cooking & dishwashing

**2. What activity outside your home uses the most water?**

- A. Washing the car
- B. Watering the lawn & garden
- C. Washing the driveway
- D. Both A & C

ANSWERS: 1. 15 A, 2. 15 B.

I R U Y M A O O

J R L P C V Y I P S A I K Y K T W W G C  
 X S I Y L L O M I W H Y U R G K H T H G  
 Y I O B G K X E V R E S N O C K J T L C  
 H N T N B Y U Y M F Z M L H N W M C A K  
 E T C Y L L A W Y D L V H I F L T W O B  
 F G R R H O E C Y G X R S S A D R M W M  
 S V E W M Z A F W L C K G Q J T Y L C Y  
 Q I V O Y F H I Q W T D U E Z A W J Y Y  
 S C P W K P V O G M W I Z G B M Q D W Y  
 U O T G T U Y R S E F G F A U C E T E T  
 K P O R M K K U G E H F B U N H O D C B  
 V A T Q B V M O R W T U N Z X N V L N F  
 W Q K H N L X C Q G U C N O V R Y K R J  
 Z A O B M H B M J Z O L E T J U M J U L  
 N J D O S K P W C D M E M Z M X H G P E  
 Y N W J E B D S T D H S P F R T O E X A  
 D Z R A O S N G P U T I R X A V Y F Y K  
 O W Y S W L W K X C V I I I A M R E G V

## WATER WORD SCRAMBLE Unscramble the Letters to Find the Water Words:

- |             |       |            |       |
|-------------|-------|------------|-------|
| 1. VOESNCRE | _____ | 5. VERIR   | _____ |
| 2. EWRAT    | _____ | 6. TRASEMS | _____ |
| 3. LUDCOS   | _____ | 7. ALEK    | _____ |
| 4. NDKIR    | _____ | 8. AEVS    | _____ |

ANSWERS: 1. CONSERVE, 2. WATER, 3. CLOUDS, 4. DRINK, 5. RIVER, 6. STREAMS, 7. LAKE, 8. SAVE